

Product datasheet for **MR206720**

Ccna2 (NM_009828) Mouse Tagged ORF Clone

Product data:

Product Type:	Expression Plasmids
Product Name:	Ccna2 (NM_009828) Mouse Tagged ORF Clone
Tag:	Myc-DDK
Symbol:	Ccna2
Synonyms:	AA408589; Ccn-1; Ccn1; Ccna; Cyca; CycA2
Mammalian Cell Selection:	Neomycin
Vector:	pCMV6-Entry (PS100001)
E. coli Selection:	Kanamycin (25 ug/mL)



[View online »](#)

ORF Nucleotide Sequence:

>MR206720 representing NM_009828
 Red=Cloning site Blue=ORF Green=Tags(s)

CTATAGGGCGGCCGGAATTCGTCGACTGGATCCGGTACCGAGGAGATCTGCC
 GCC**CGCATCGCC**

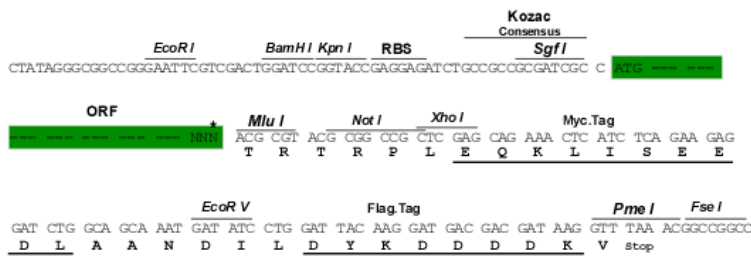
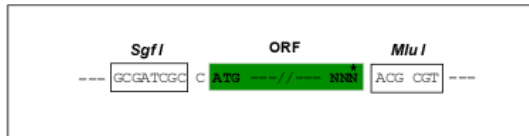
ATGCCGGGCACCTCGAGGCATTCGGGTCGCGATGCGGGCTCAGCCCTGCTCTCGTGCATCAGGAAGACC
 AAGAGAATGTCAACCCCGAAAACTGGCGCCAGCCAGCAGCCGCGGGCGCAGGCCGTGCTGAAGGCCGG
 GAACGTGCGTGGACCCGCGCCGACGAGAAGCTCAAGACTCGACGGGTTGCTCCTTAAAGACCTTCT
 ATAAACGATGAGCATGTCACTGCTGGTCTTCATGAAAGCAGTCAGTAAACAGCCTGCCTTACCATT
 ATGTGGATGAAGCAGAAGAGACTCAGAAGAGCCAGCTGAGCTTAAAGAAACAGAGTGTGAAGATGCCCT
 GGCTTTTAAATGCAGTGTCTTTACCCGGAGCAAGAAAACCACTGACACCTCTTGACTATCCAATGGAT
 GGCAGTTTTGAATCACCACATGTATGGATATGTCTATTGTCTTAGAAGACAAGCCAGTGAACGTTAATG
 AAGTACCTGACTATCAAGAAGACATTACACGTACCTTAGGAAATGGAGTTAAATGTAACCTAAAGT
 GGGTTACATGAAGAGGCAGCCAGACATCTAACAGCATGAGGGCCATCCTTGTGGACTGGCTGGTTGAG
 GTGGGAGAAGAATATAAACTACAGAATGAGACCCCTGCATTTGGCTGTGAACCTACATTGATAGATTCTCT
 CCTCCATGTCTGTGTTAAGAGGGAAGCTTCAGCTTGTAGGCACGGCTGCTATGCTGCTAGCTTCCAAGTT
 TGAAGAAATATACCCCGAAGTAGCAGAGTTTGTGTATATTACAGACGATACCTATTCCAAGAAGCAG
 GTTCTGAGAAATGGAGCACCTAGTATTGAAAGTCTTGGCTTTTGACTTGGCTGCACCAACAGTAAATCAGT
 TCCTTACCAGTACTTCTGCACCTGCAGCCTGCAAACTGTAAGGTTGAAAGCTTAGCAATGTTTTTGGG
 AGAACTGAGTTTATAGATGTGACCCGTACCTTAAGTACCTGCCTTCACTCATTGCTGGAGCTGCCTTC
 CACTTGGCTCTTACACAGTACAGGACAGAGCTGGCCTGAGTCATTGGCACAACAGACTGGATATACCC
 TGGAGAGTCTTAAAGCCTTGTCTTGTGGACCTTACCAGACCTACCTCAAAGCGCCACAACATGCCCAACA
 GTCAATACGGGAAAAGTACAAGCATTCAAATATCACAGTGTTTCTCTTCAACCCACCCAGAGACACTA
 AGTGTG

ACGCGTACGCGGCCGCTCGAGCAGAACTCATCTCTGAAGAGGATCTGGCAGCAAATGATATCCTGGATT
 ACAAGGATGACGACGATAAGGTTTAA

Restriction Sites:
 Cloning Scheme:

Sgfl-MluI

Cloning sites used for ORF Shuttling:



* The last codon before the Stop codon of the ORF

ACCN:

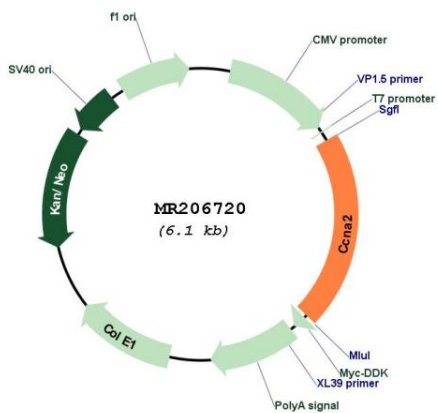
NM_009828

ORF Size:

1266 bp

OTI Disclaimer:	The molecular sequence of this clone aligns with the gene accession number as a point of reference only. However, individual transcript sequences of the same gene can differ through naturally occurring variations (e.g. polymorphisms), each with its own valid existence. This clone is substantially in agreement with the reference, but a complete review of all prevailing variants is recommended prior to use. More info
OTI Annotation:	This clone was engineered to express the complete ORF with an expression tag. Expression varies depending on the nature of the gene.
Components:	The ORF clone is ion-exchange column purified and shipped in a 2D barcoded Matrix tube containing 10ug of transfection-ready, dried plasmid DNA (reconstitute with 100 ul of water).
Reconstitution Method:	<ol style="list-style-type: none"> 1. Centrifuge at 5,000xg for 5min. 2. Carefully open the tube and add 100ul of sterile water to dissolve the DNA. 3. Close the tube and incubate for 10 minutes at room temperature. 4. Briefly vortex the tube and then do a quick spin (less than 5000xg) to concentrate the liquid at the bottom. 5. Store the suspended plasmid at -20°C. The DNA is stable for at least one year from date of shipping when stored at -20°C.
RefSeq:	NM_009828.3
RefSeq Size:	2796 bp
RefSeq ORF:	1269 bp
Locus ID:	12428
UniProt ID:	P51943
Cytogenetics:	3 17.67 cM
MW:	47.7 kDa
Gene Summary:	<p>Cyclin which controls both the G1/S and the G2/M transition phases of the cell cycle. Functions through the formation of specific serine/threonine kinase holoenzyme complexes with the cyclin-dependent protein kinases CDK1 and CDK2. The cyclin subunit confers the substrate specificity of these complexes and differentially interacts with and activates CDK1 and CDK2 throughout the cell cycle.[UniProtKB/Swiss-Prot Function]</p>

Product images:



Circular map for MR206720