

## Product datasheet for MR206712

### Krt23 (NM\_033373) Mouse Tagged ORF Clone

#### Product data:

Product Type:	Expression Plasmids
Product Name:	Krt23 (NM_033373) Mouse Tagged ORF Clone
Tag:	Myc-DDK
Symbol:	Krt23
Synonyms:	CK23; Haik1; K23; Krt1-23
Vector:	pCMV6-Entry (PS100001)
E. coli Selection:	Kanamycin (25 ug/mL)
Cell Selection:	Neomycin
ORF Nucleotide Sequence:	>MR206712 ORF sequence Red=Cloning site Blue=ORF Green=Tags(s)

TTTTGTAATACGACTCACTATAGGGCGCCGGAATTCGTCGACTGGATCCGGTACCGAGGAGATCTGCC  
GCC**CGGATCGCC**

ATGAACCTCAGCCACAGCTTTAACCCAGACCTACTCGGCCTCTGTCCACAGCCTCGGAAGCACCCGGGGG  
GGCAGGGGAGCTGCCATCGGGCACCGAGTGTCCATGGAGGCGCAGGGGGTGTCCGCATCTCCCTTTCCTT  
CACCACGCCAGGCTGCCTGCCTCTGGAGGATCATGGGGGTCTGGAAGAAGCAGTCCCCTGCTAGGTGGC  
AATGGCAAGGCCACCATGCAGAATCTCAACGATCGCCTGGCCACATATCTGGAGAAGGTGCGGGCTCTAG  
AGGAGGGCTAACTCGAAGCTGGAACCCGTAATAAAGGTGGCAGGAGAGAGAAGCCAGCCACAGAAA  
GGATTATCCAGTATGAGGAAAACATCAGCCGCTGCAGGAGCAGATAGTGGACGGTAAGATGGCCAAT  
GCCACATTGTCGTGCTCATTGACAACGCCAGGATGGCAGTGGATGACTCAACCTGAAGTTTAAAAACG  
AACACTCGTTAAAGAAAGACTTGGAAATGAAGTTGAGGGCCTCCGAAAGACCTTGGATGATCTGACCAT  
TGTCACAACAGACCTGGAACAGGAGGTGGAGGGGATGAGGAAAGAGCTGATCCTCATGAAGAAACGCCAT  
GAGCAGGAAATGGAGGAGAATCACTTCCGAGTGACTTCAAGGTCAGTGTGAAGGTGGACACTACTCCAG  
GGGAAGATCTGATTAAGGTCTTGAAGATATGAGGCAGGAATACGAGTTAATAATAAAGAAGAAACATCA  
AGAGTTGGACACCTGGTTCAGAGAGCAGTCAGCCGCCATGGCCAGGAAGTGGCCAGTCCAGCGCCTGTA  
CAGGGCAACCAAAGTGATATCCATGAGCTGAGGAGAACATTCCAGGCCCTAGAGATTGACCTGCAGGCC  
AGCACAGCAGGAAAACCGCTTTGGAAAACATGCTGACAGAGACCCGGGCTCGATACTCCTGCCGTCTCCA  
GGACATGCAGCAGATCATCTCCACTACGAAGAAGAGCTGATTGAGTCCGCCAAGACCTGGAGCGTCAG  
AACATGAACACAAGGTGCTGCTGGGCATCAAAACCCACCTGGAGAAGGAAATCGCCACCTACCGCCGGC  
TCCTGGAGGGAGACACTGAAGGGACGATGGATGGATCTGAGTCAAGGCTGAAAGGATCTGAAGCTTCAAC  
GATCAAGGCCATCACTCAAGAGAGTGTCAATGGAAGAATCGTTCTTCTCAAGTGAATGATCCAAAAG  
CATATA

**ACGCGT**ACGCGGGCCGCTCGAGCAGAAACTCATCTCAGAAGAGGATCTGGCAGCAAATGATATCCTGGATT  
ACAAGGATGACGACGATAAGGTTTAA



[View online »](#)

**Protein Sequence:** >MR206712 protein sequence  
Red=Cloning site Green=Tags(s)

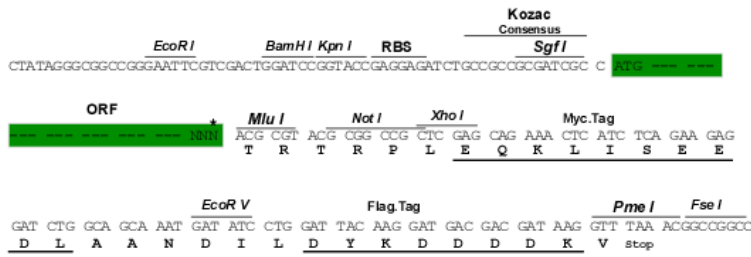
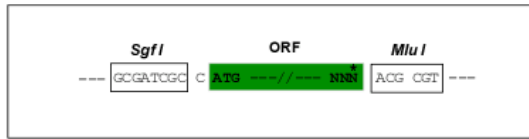
MNSSHSFNQTYASVHSLGSTRGRQGSCHRAPSVHGGAGGVRIISLFTTPGCLPPGGSWGSGRSSPLLGG  
 NGKATMQNLNDRLATYLEKVRALLEEANSKLETRILRWHQEREPShRKDYsQYEENISRLQEIVDGKMAN  
 AHIVVLIDNARMAVDDFNLFENEHSLKKDLIEVEGLRKTLDDLITVTDLEQEVEGMRKELILMKKRH  
 EQEMEENHLPsDFKVSVKVDTPGEDLIKVLedMRQEYELI I KKKHQELDTWFREQSAAMAQEVASpAPV  
 QGNQSDIHELRRTFQALEIDLQAQHSRKTALENMLTETRARYsCRLQDMQQIISHYEEELIQLRQDLERQ  
 NNEHKVLLGIKTHLEKEIATYRRLLEGDTEGTMdGSESRLKGSEASTIKAITQESVNGRIVLSQVNEIQK  
 HI

TRTRPLEQKLISEEDLAANDILDYKDDDDKV

**Restriction Sites:** SgfI-MluI

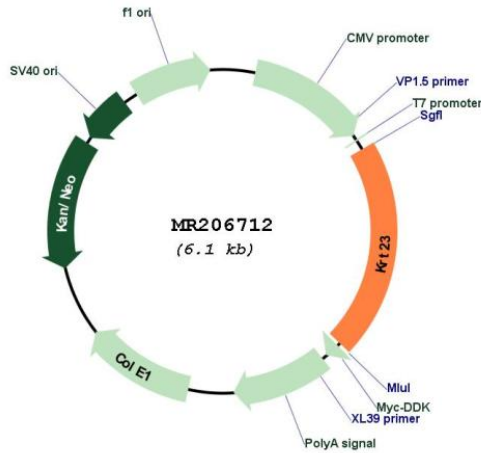
**Cloning Scheme:**

Cloning sites used for ORF Shuttling:



\* The last codon before the Stop codon of the ORF

**Plasmid Map:**



**ACCN:** NM\_033373

<b>ORF Size:</b>	1269 bp
<b>OTI Disclaimer:</b>	The molecular sequence of this clone aligns with the gene accession number as a point of reference only. However, individual transcript sequences of the same gene can differ through naturally occurring variations (e.g. polymorphisms), each with its own valid existence. This clone is substantially in agreement with the reference, but a complete review of all prevailing variants is recommended prior to use. <a href="#">More info</a>
<b>OTI Annotation:</b>	This clone was engineered to express the complete ORF with an expression tag. Expression varies depending on the nature of the gene.
<b>Components:</b>	The ORF clone is ion-exchange column purified and shipped in a 2D barcoded Matrix tube containing 10ug of transfection-ready, dried plasmid DNA (reconstitute with 100 ul of water).
<b>Reconstitution Method:</b>	<ol style="list-style-type: none"><li>1. Centrifuge at 5,000xg for 5min.</li><li>2. Carefully open the tube and add 100ul of sterile water to dissolve the DNA.</li><li>3. Close the tube and incubate for 10 minutes at room temperature.</li><li>4. Briefly vortex the tube and then do a quick spin (less than 5000xg) to concentrate the liquid at the bottom.</li><li>5. Store the suspended plasmid at -20°C. The DNA is stable for at least one year from date of shipping when stored at -20°C.</li></ol>
<b>RefSeq:</b>	<a href="#">NM_033373.2</a>
<b>RefSeq Size:</b>	1560 bp
<b>RefSeq ORF:</b>	1269 bp
<b>Locus ID:</b>	94179
<b>UniProt ID:</b>	<a href="#">Q99PS0</a>
<b>Cytogenetics:</b>	11 D
<b>MW:</b>	48 kDa