

Product datasheet for MR206686

Cpa4 (NM_027926) Mouse Tagged ORF Clone

Product data:

Product Type: Expression Plasmids
 Product Name: Cpa4 (NM_027926) Mouse Tagged ORF Clone
 Tag: Myc-DDK
 Symbol: Cpa4
 Synonyms: 1110019K20Rik; AV009555
 Mammalian Cell Selection: Neomycin
 Vector: pCMV6-Entry (PS100001)
 E. coli Selection: Kanamycin (25 ug/mL)
 ORF Nucleotide Sequence: >MR206686 representing NM_027926
 Red=Cloning site Blue=ORF Green=Tags(s)

TTTTGTAATACGACTCACTATAGGGCGGCCGGAATTCGTCGACTGGATCCGGTACCGAGGAGATCTGCC
 GCC**CGGATCGCC**

ATGAAGTGGCTACTGTTCTTTGGGGCCCTGATTGGGGCAGGCATCTGCGGCCGAGATAAATCTTTGGGG
 ACCAAGTTTTTAGGATTAATGTCAGAAATGGAGACGAGATCAGAAAAGTACTGAGCTAGTGAATCTGA
 CCCTTAAAGCTCAGTGTCTGAAATCTCCCTCCACTTTTGATCGGCCCGTGGATATTCTCGTCCCTTCT
 GTCAGCTTGCTCCAGTCAAGTCTTCTGAAGTCCCAGGGTTAGACTACTCCGTGACAATTGAGGACC
 TCCAGGCCCTTTAGATAACGAAGATGAAGAAATGCAGCACAATGAAGGGATAGAGCGGAGTGGTGACTT
 CAACTACGGAGCTTACCATCCCCGGAGGCTATTTACCACGAGATGGACAGTATTGCCACAGACTTTCCT
 GAGCTGGTGAGCAGAGTGAAGATTGGAGAGACATTTGAAAAGCGGCCCATGTATGTTCTAAAAGTTCAGCA
 CGGGAGGAGGCAAGAAGCGGCCAGCCATTTGGTTGAATGCAGGCATCCATGCCCGTGAGTGGATCTCACA
 GGCCACAGCCATCTGGACAGCGAGGAAGATTGTAAGTATTATAAAAAGGACCCGGCTATCACCTCCATC
 TTGAAGAAAGTGGATATTTCTTGTGGCCGTGGCCAATCCTGATGGATATGTGTACACGCAAAGCCAGA
 ACCGATTATGGAGAAAGACCGGTCCCGGAACCCAGGAAGCCGCTGTGTTGGAGCCGATCCAAACAGAAA
 CTGGAATGCTAGTTTTGCAGGAGAGGGGACCAGTGATAACCCTTGCTCTGAAGTGTACCATGGCTCCCAC
 CCCAATCTGAAGTGGAGGTGAAATCGGTGGTGGATTTCAATCAAAGCATGGAACTTCAAATGCTTCA
 TTGACCTGCATAGCTACTCACAGCTGCTGATGTATCCCTATGGGTACACAGTCAAGAAGGCCCGGATGC
 TGAGGAGCTGGACGATGTGGCGAGGAATGCAGCCCAAGCCCTGGCTTCTCTCGGGCACTAAGTACCGA
 GTGGGCCCAACTTGACACCACGCTATCCAGCTAGTGGGAGCAGCGTTGACTGGGCATACGACAATGGCA
 TCAAGTATGCTTTCACATTTGAGCTGAGAGACTGGGTACTACGGCTTCTCTTCCAGCCAGCCAGAT
 CATCCCCACCGCGGAGGAGACCTGGCTAGGGCTGAAGACCATCATGGAACATGTTCCGGGACCACCTCTAC

ACGCGTACGCGGCCGCTCGAGCAGAAAATCATCTCAGAAGAGGATCTGGCAGCAAATGATATCCTGGATT
 ACAAGGATGACGACGATAAGGTTTAA



[View online »](#)

Protein Sequence: >MR206686 representing NM_027926

Red=Cloning site Green=Tags(s)

MKWLFFGALIGAGICGRDKFFGDQVFRINVRNGDEIRKLTENVSDHLKLSVWKSPSTFDRPVLDILVPS
 VSLLPVKSFLLKSQLDYSVTIEDLQALLDNEDEEMQHNEGIERSGDFNYGAYHPLEAIYHEMDSIATDFP
 ELVSRVKIGETF EKRP MYVLK FSTGGGKKRPAIWL NAGIHAREWISQATAIWTARKIVTDYK KDP AITS I
 LKKVDIFLLPVANPDGYVYTQSQNRLWRKTRSRNPGSRCV GADPNRNWNASFAGEGTS DNPCSEVYHGSH
 PNSEVEVKSVDVFIQKHGNFKCFIDLHSYSQLLMYPYGYTVKKAPDAEELDDVARNAALASLSGTKYR
 VGPTCTTYYPASGSSVDWAYDNGIKYAFTFELRDTGYYGFLLPASQIIP TAEETWLGLKTIMEHVRDHL Y

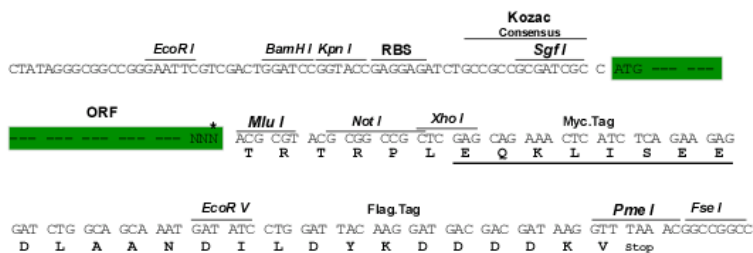
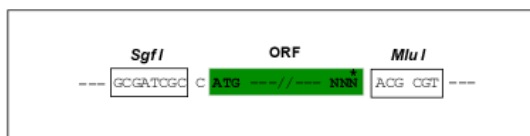
TRTRPLEQKLISEEDLAANDILDYKDDDDKV

Chromatograms: https://cdn.origene.com/chromatograms/mm9005_f09.zip

Restriction Sites: SgfI-MluI

Cloning Scheme:

Cloning sites used for ORF Shuttling:



* The last codon before the Stop codon of the ORF

ACCN: NM_027926

ORF Size: 1260 bp

OTI Disclaimer: The molecular sequence of this clone aligns with the gene accession number as a point of reference only. However, individual transcript sequences of the same gene can differ through naturally occurring variations (e.g. polymorphisms), each with its own valid existence. This clone is substantially in agreement with the reference, but a complete review of all prevailing variants is recommended prior to use. [More info](#)

OTI Annotation: This clone was engineered to express the complete ORF with an expression tag. Expression varies depending on the nature of the gene.

Components: The ORF clone is ion-exchange column purified and shipped in a 2D barcoded Matrix tube containing 10ug of transfection-ready, dried plasmid DNA (reconstitute with 100 ul of water).

Reconstitution Method:

1. Centrifuge at 5,000xg for 5min.
2. Carefully open the tube and add 100ul of sterile water to dissolve the DNA.
3. Close the tube and incubate for 10 minutes at room temperature.
4. Briefly vortex the tube and then do a quick spin (less than 5000xg) to concentrate the liquid at the bottom.
5. Store the suspended plasmid at -20°C. The DNA is stable for at least one year from date of shipping when stored at -20°C.

RefSeq: [NM_027926.3](#)

RefSeq Size: 2061 bp

RefSeq ORF: 1263 bp

Locus ID: 71791

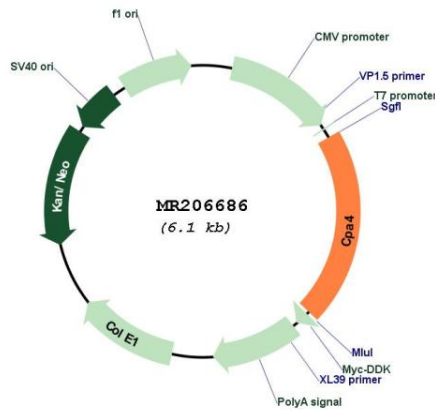
UniProt ID: [Q6P8K8](#)

Cytogenetics: 6 A3.3

MW: 47.8 kDa

Gene Summary: This gene encodes a member of the carboxypeptidase A family of zinc metalloproteases that could be involved in the histone hyperacetylation pathway. The encoded preproprotein undergoes proteolytic processing that removes the N-terminal activation peptide to generate a functional enzyme. This gene is located in a cluster of carboxypeptidase genes on chromosome 6. [provided by RefSeq, Jul 2016]

Product images:



Circular map for MR206686