

Product datasheet for MR206636

Casp12 (NM_009808) Mouse Tagged ORF Clone

Product data:

Product Type:	Expression Plasmids
Product Name:	Casp12 (NM_009808) Mouse Tagged ORF Clone
Tag:	Myc-DDK
Symbol:	Casp12
Mammalian Cell Selection:	Neomycin
Vector:	pCMV6-Entry (PS100001)
E. coli Selection:	Kanamycin (25 ug/mL)
ORF Nucleotide Sequence:	>MR206636 ORF sequence Red=Cloning site Blue=ORF Green=Tags(s)

TTTTGTAATACGACTCACTATAGGGCGGCCGGAATTCGTCGACTGGATCCGGTACCGAGGAGATCTGCC
GCC**CGATCGCC**

ATGGCGGCCAGGAGGACACATGAAAGAGATCCAATCTACAAGATCAAAGTTTGGCCAAGGACATGCTGG
ATGGGGTTTTGATGACCTGGTGGAGAAGAATGTTTTAAATGGAGATGAGTTACTCAAAATAGGGGAAA
TGCGAGTTTCATCCTGAACAAGGCTGAGAATCTGGTTGAGAACTCTTAGAGAAAACAGACATGGCAGGA
AAAATATTTGCTGGCCACATTGCCAATCCCAGGAACAGCTGAGTTTACAATTTCTAATGATGAGGATG
ATGGACCTCAGAAGATGTACACCTTCTCCATCAGAATCCAAGAGAAAAGTAGAGGATGATGAAAT
GGAGGTAATGCTGGATTGGCCCATGAATCACATCTAATGCTGACAGCTCCTCATGGACTCCAGAGCTCA
GAAGTCCAAGATACACTGAAGCTTTGTCCACGTGATCAGTTTTGTAAGATAAAGACAGAAAGGGCAAAAG
AGATATATCCAGTGATGGAGAAGGAGGGACGAACACGTCTGGCTCTCATCATCTGCAACAAAAGTTTGA
CTACCTTTTTGATAGAGATAATGCTGATACTGACATTTTGAACATGCAAGAATACTTAAAAATCTTGG
TACTCTGTGGTGTAAAGGAAAACCTTACAGCTCAGGAAATGGAGACAGAGTTAATGCAGTTTGTGGCC
GTCCAGAGCACCAGTCTCAGACAGCACATTCTGGTGTATGTCCATGGCATCCTGGAAGGAATCTG
TGGGTGAAGCACCGAAACAAAAGCCAGATGTTCTTCATGATGACACTATCTTCAAAATTTTCAACAAC
TCTAACTGTCGGAGTCTGAGAAACAAACCAAGATTCTCATCATGCAGGCCTGCAGAGGCAGATATAATG
GAACTATTTGGGTATCCACAAACAAAGGATAGCCACTGCTGATACAGATGAGGAACGTGTGTTGAGCTG
TAAATGGAATAATAGTATAACAAAGGCCATGTGGAGACAGATTTTCATTGCTTTCAAATCTTCTACCCCA
CATAATATTTCTTGAAGGTAGGCAAGACTGGTTCCCTCTTCAATTTCAAACACTATTGACTGCTTCAAAA
AGTACTGTTGGTGTATCATTGGAGGAAATTTTCGAAAGGTTCAACACTCATTGAGGTCCCAGGTGA
ACTGACCCAGATGCCACTATTGAGAGAGTATCCATGACACGCTATTTCTACCTTTTCCCGGGAAT

ACGCGTACGCGGCCGCTCGAGCAGAAACTCATCTCAGAAGAGGATCTGGCAGCAATGATATCCTGGATT
ACAAGGATGACGACGATAAGGTTTAA



[View online »](#)

Protein Sequence: >MR206636 protein sequence
 Red=Cloning site Green=Tags(s)

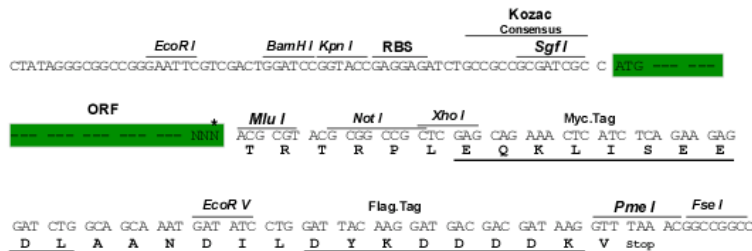
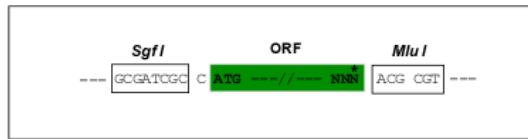
MAARRTHERDPIYKIKGLAKDMLDGVFDDLVEKNVLNGDELLKIGESASFILNKAENLVENFLEKTD MAG
 KIFAGHIANSQEQLSLQFSNDEDDGPQKICTPSSPSESKRKVEDDEMEVNAAGLAHESHLMLTAPHGLQSS
 EVQDTLKL CPRDQFCKIKTERAKEIYPVMEKEGRTRLAL IICNKKFDYLFDRDNADTDILNMQELLENLG
 YSVVLKENLTAQEMETELMQFAGRPEHQSSDSTFLVFM SHGILEGICGVKHRNKKPDVLHDDTIKIFNN
 SNCRSLRNKPKILIMQACRGRYNGTIWVSTNKG IATADTDEERVL SCKWNN SITKAHVETDFIAFKSSTP
 HNISWKVGKTGSLFISKLIDCFKKYCWCYHLEE IFRKVQHSFEVPGELTQMPTIERVSMTRYFYLFPGN

TRTRPLEQKLISEEDLAANDILDYKDDDDKV

Restriction Sites: SgfI-MluI

Cloning Scheme:

Cloning sites used for ORF Shuttling:



* The last codon before the Stop codon of the ORF

ACCN: NM_009808

ORF Size: 1260 bp

OTI Disclaimer: The molecular sequence of this clone aligns with the gene accession number as a point of reference only. However, individual transcript sequences of the same gene can differ through naturally occurring variations (e.g. polymorphisms), each with its own valid existence. This clone is substantially in agreement with the reference, but a complete review of all prevailing variants is recommended prior to use. [More info](#)

OTI Annotation: This clone was engineered to express the complete ORF with an expression tag. Expression varies depending on the nature of the gene.

Components: The ORF clone is ion-exchange column purified and shipped in a 2D barcoded Matrix tube containing 10ug of transfection-ready, dried plasmid DNA (reconstitute with 100 ul of water).

Reconstitution Method:

1. Centrifuge at 5,000xg for 5min.
2. Carefully open the tube and add 100ul of sterile water to dissolve the DNA.
3. Close the tube and incubate for 10 minutes at room temperature.
4. Briefly vortex the tube and then do a quick spin (less than 5000xg) to concentrate the liquid at the bottom.
5. Store the suspended plasmid at -20°C. The DNA is stable for at least one year from date of shipping when stored at -20°C.

RefSeq: [NM_009808.4](#)

RefSeq Size: 2605 bp

RefSeq ORF: 1260 bp

Locus ID: 12364

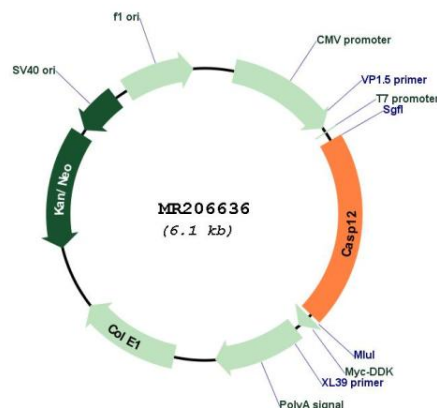
UniProt ID: [O08736](#)

Cytogenetics: 9 2.46 cM

MW: 47.9 kDa

Gene Summary: Involved in the activation cascade of caspases responsible for apoptosis execution. [UniProtKB/Swiss-Prot Function]

Product images:



Circular map for MR206636