

Product datasheet for MR206582

Cept1 (NM_133869) Mouse Tagged ORF Clone

Product data:

Product Type:	Expression Plasmids
Product Name:	Cept1 (NM_133869) Mouse Tagged ORF Clone
Tag:	Myc-DDK
Symbol:	Cept1
Synonyms:	9930118K05Rik; mCEPT1
Mammalian Cell Selection:	Neomycin
Vector:	pCMV6-Entry (PS100001)
E. coli Selection:	Kanamycin (25 ug/mL)
ORF Nucleotide Sequence:	>MR206582 ORF sequence Red=Cloning site Blue=ORF Green=Tags(s)

TTTTGTAATACGACTCACTATAGGGCGGCCGGAATTCGTCGACTGGATCCGGTACCGAGGAGATCTGCC
GCC**CGATCGCC**

ATGAGTGGGCATCGGTCAACAAGGAAACGATGTGGAGATTCTCACCCAGAGTCCCCTGTGGGCTTTGGGC
ATATGAGTACTACAGGGTGTGTATTAATAAATGTTTCAGTTACCGACACCACCCTGTCAAGACACCA
GTTAAACGGCTAGAAGAACACAGGTATCAGAGTGTGGACGGTCCCTTCGAGCCCTAATGCAAGGA
TACTGGGAATGGCTAGTTGGAAGAGTACCCTCATGGATTGCCCAATTCATCACCATCATTGGACTAT
CAATAAATATCTGTACAACCTATTTGTTAGTCTTCTACTGCCCTACAGCTACAGAGCAGGCACCTCTGTG
GGCTTATATTGCCTGTGCTTGTGGCCTTTTCATTTACCAGTCTCTGGATGCCATAGATGGGAAACAGGCC
AGAAGAACTAACAGTAGCTCTCCTCTGGGGAACCTTTTGGATCATGGCTGTGACTCACTATCGACAGTTT
TTGTGGTCTTGGAACTTGTATTGCAGTACAACCTGGGACAAATCCTGACTGGATGTTTTTTTGTGTTT
TGCTGGGACATTCATGTTCTATTGTGCACACTGGCAAACATATGTTTCTGGAACATTGCGATTTGGAATA
ATTGATGTGACTGAAGTGCAAATCTTCATAAATCATGCATTTGCTGGCAGTGATTGGAGGACCACCTT
TTTGGCAATCTATGATTCCTGTGTTGAATTTCAAATGAACTTCTTCTGCACCTTGTACTGTGGCAGG
GACCATATTTTCTGTACAAATTACTCCGTGTAATCTTCACAGGTGGTGTGGCAAAAATGGGTCAACC
ATAGCAGGAACAAGTCTCTTTCTCCTTTCTGCATATTGGATCAGTGATCAGTTCAGTGTATGATGAT
ACAAGAAATCAGCAGTTCAGCTTTTGGAAAGCATCCATGTCTTTATATACTGACATTTGGTTTTGTGTC
GGCTAAAATCACTAATAAGCTTGTGGTGTCTCACATGACGAAAAGTGAATGCATTTGCATGACACAGCA
TTCATAGTCCAGCACTTCTGTTCTGGACCAGTATTTAACAGCTTCATTGATGAATATAGTACTTT
GGATTGCCTTGATCTTCTCTTTCTTTGATTTGATTGTTACTGTGTCAGTGTGGCAATCAGATTGCATC
TCACCTGCATATACATGTCTTCAGAATTAAGCCTCTACAGCTCACTCTAATCATCAC

ACGCGTACGCGGCCGCTCGAGCAGAAACTCATCTCAGAAGAGGATCTGGCAGCAAATGATATCCTGGATT
ACAAGGATGACGACGATAAGGTTTAA



[View online »](#)

Protein Sequence: >MR206582 protein sequence
 Red=Cloning site Green=Tags(s)

MSGHRSTRKRCGDSHPESPVGFGHMSTTGCVLNKLFLPTPPLSRHQLKRLEEHRYSAGRSLLLEPLMQG
 YWEWL VGRVPSWIAPNLITIIIGLSINICTTILLVFYCPATEQAPLWAYIACACGLFIYQSLDAIDGKQA
 RRTNSSSPLGELFDHGCDLSTVFLVLTGTCIAVQLGTNPDMWFCCFAGTFMFYCAHWQTYVSGTLRFGI
 IDVTEVQIFIIIMHLLAVIGPPFWQSMIPVLNIQMKLLPALCTVAGTIF SCTNYFRVIF TGGVGNKST
 IAGTSVLS PFLHIGSVITLAVMIYKSAVQLFEKHPCLYLTFGFVSAKITNKL VVAHMTKSEMHLHDTA
 FIGPALLFLDQYFNSFIDEYIVLWIALIFSFFDLIRYCVSVCNQIASHLHIHFRIKASTAHSNHH

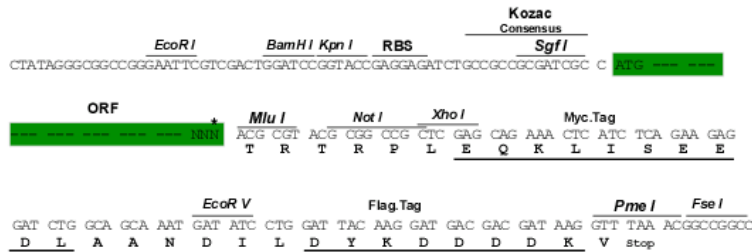
TRTRPLEQKLISEEDLAANDILDYKDDDDKV

Restriction Sites:

SgfI-MluI

Cloning Scheme:

Cloning sites used for ORF Shuttling:



* The last codon before the Stop codon of the ORF

ACCN: NM_133869

ORF Size: 1251 bp

OTI Disclaimer: The molecular sequence of this clone aligns with the gene accession number as a point of reference only. However, individual transcript sequences of the same gene can differ through naturally occurring variations (e.g. polymorphisms), each with its own valid existence. This clone is substantially in agreement with the reference, but a complete review of all prevailing variants is recommended prior to use. [More info](#)

OTI Annotation: This clone was engineered to express the complete ORF with an expression tag. Expression varies depending on the nature of the gene.

Components: The ORF clone is ion-exchange column purified and shipped in a 2D barcoded Matrix tube containing 10ug of transfection-ready, dried plasmid DNA (reconstitute with 100 ul of water).

Reconstitution Method:

1. Centrifuge at 5,000xg for 5min.
2. Carefully open the tube and add 100ul of sterile water to dissolve the DNA.
3. Close the tube and incubate for 10 minutes at room temperature.
4. Briefly vortex the tube and then do a quick spin (less than 5000xg) to concentrate the liquid at the bottom.
5. Store the suspended plasmid at -20°C. The DNA is stable for at least one year from date of shipping when stored at -20°C.

RefSeq: [NM_133869.4](#)

RefSeq Size: 2814 bp

RefSeq ORF: 1251 bp

Locus ID: 99712

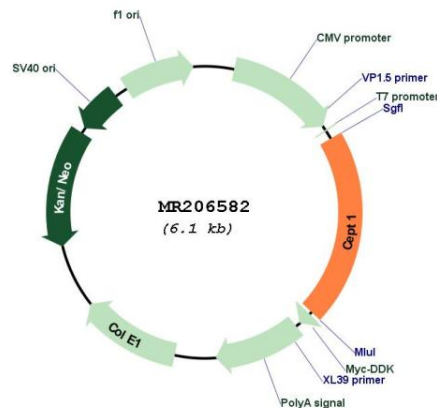
UniProt ID: [Q8BGS7](#)

Cytogenetics: 3 F2.3

MW: 46.4 kDa

Gene Summary: Catalyzes both phosphatidylcholine and phosphatidylethanolamine biosynthesis from CDP-choline and CDP-ethanolamine, respectively. Involved in protein-dependent process of phospholipid transport to distribute phosphatidyl choline to the luminal surface. Has a higher cholinephosphotransferase activity than ethanolaminephosphotransferase activity (By similarity).[UniProtKB/Swiss-Prot Function]

Product images:



Circular map for MR206582