

Product datasheet for MR206548L4

Klf15 (NM_023184) Mouse Tagged Lenti ORF Clone

Product data:

Product Type:	Expression Plasmids
Product Name:	Klf15 (NM_023184) Mouse Tagged Lenti ORF Clone
Tag:	mGFP
Symbol:	Klf15
Synonyms:	1810013I09Rik; AV048136; AW494632; CKLF; KKLf
Mammalian Cell Selection:	Puromycin
Vector:	pLenti-C-mGFP-P2A-Puro (PS100093)
E. coli Selection:	Chloramphenicol (34 ug/mL)
ORF Nucleotide Sequence:	The ORF insert of this clone is exactly the same as(MR206548).
Restriction Sites:	SgfI-MluI
Cloning Scheme:	

Cloning sites used for ORF Shuttling:



* The last codon before the Stop codon of the ORF.

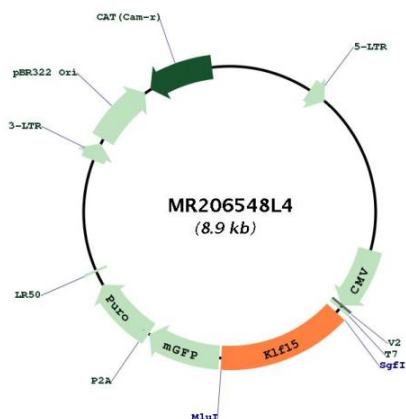
ACCN:	NM_023184
ORF Size:	1248 bp



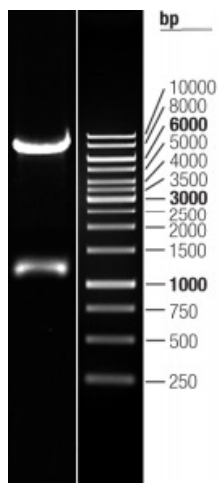
[View online »](#)

OTI Disclaimer:	The molecular sequence of this clone aligns with the gene accession number as a point of reference only. However, individual transcript sequences of the same gene can differ through naturally occurring variations (e.g. polymorphisms), each with its own valid existence. This clone is substantially in agreement with the reference, but a complete review of all prevailing variants is recommended prior to use. More info
OTI Annotation:	This clone was engineered to express the complete ORF with an expression tag. Expression varies depending on the nature of the gene.
Components:	The ORF clone is ion-exchange column purified and shipped in a 2D barcoded Matrix tube containing 10ug of transfection-ready, dried plasmid DNA (reconstitute with 100 ul of water).
Reconstitution Method:	<ol style="list-style-type: none">1. Centrifuge at 5,000xg for 5min.2. Carefully open the tube and add 100ul of sterile water to dissolve the DNA.3. Close the tube and incubate for 10 minutes at room temperature.4. Briefly vortex the tube and then do a quick spin (less than 5000xg) to concentrate the liquid at the bottom.5. Store the suspended plasmid at -20°C. The DNA is stable for at least one year from date of shipping when stored at -20°C.
RefSeq:	NM_023184.3
RefSeq Size:	2294 bp
RefSeq ORF:	1248 bp
Locus ID:	66277
UniProt ID:	Q9EPW2
Cytogenetics:	6 D1
Gene Summary:	Transcriptional regulator that binds to the GA element of the CLCNKA promoter (By similarity). Binds to the KCNIP2 promoter and regulates KCNIP2 circadian expression in the heart. Is a repressor of CCN2 expression, involved in the control of cardiac fibrosis. Is also involved in the control of cardiac hypertrophy acting through the inhibition of MEF2A, GATA4 and MYOCD activity. Is a negative regulator of TP53 acetylation. Inhibits NF-kappa-B activation through repression of EP300-dependent RELA acetylation (By similarity). Involved in podocyte differentiation.[UniProtKB/Swiss-Prot Function]

Product images:



Circular map for MR206548L4



Double digestion of MR206548L4 using SgfI and MluI