

Product datasheet for **MR206545**

Naga (NM_008669) Mouse Tagged ORF Clone

Product data:

Product Type:	Expression Plasmids
Product Name:	Naga (NM_008669) Mouse Tagged ORF Clone
Tag:	Myc-DDK
Symbol:	Naga
Mammalian Cell Selection:	Neomycin
Vector:	pCMV6-Entry (PS100001)
E. coli Selection:	Kanamycin (25 ug/mL)
ORF Nucleotide Sequence:	>MR206545 ORF sequence Red=Cloning site Blue=ORF Green=Tags(s)

TTTTGTAATACGACTCACTATAGGGCGGCCGGAATTCGTCGACTGGATCCGGTACCGAGGAGATCTGCC
GCC**CGATCGCC**

ATGTTGCAGAAGACAGTCTTACTGGCCCTGGTGGCTCAGGTAAGTGTGCTGGAGAATGGGCTCCTGC
GGACGCCACCCATGGGCTGGCTGGCCTGGGAACGCTTCCGCTGTAACATCGACTGTGTGGAGGCCGAA
GAAGTGCATCAGTGAACGGCTCTTTATGGAGATGGCGGACAGACTGGCCAGGATGGATGGCGGGACCTG
GGCTATGTATACCTCAACATCGATGACTGCTGGATTGGTGGGCGTGACGCTCAGGCCGCTAATTCCTG
ATCCCAAGCGCTTCCCTCACGGATTGCCTTCTAGCTGACTATGCTCACTCTTTGGGCTGAAGCTGGG
CATCTATGAGGACATGGGCAAAATGACCTGCATGGGTTACCCTGGTACCACCCTAGACAAAGTGGAGCTG
GACGCGGAAACCTTCGCAGAGTGAAGGTGGACATGCTGAAGTTGGATGGCTGTTTCTCCAGCTCCAGAG
AACGTGCAGAGGGGTACCCCAAGATGGCTGCTGCCCTGAACGCCACGGGCCGTCCCATTCGCTTTTCTTG
CAGCTGGCCAGCCTATGAAGGGGGCCTACCCCAAGGTGAAGTACACCGAGGTTTCCAGGGTCTGCAAT
CTCTGGCGCAACTATAAAGACATCCAGGACTCCTGGAAGAGTGTGCTGTCCATCCTGGACTGTTTTGTGA
GACACCAGGATGTACCGCAGCCGGTGGCGGGTCTGGGCACTGGAATGACCCAGACATGCTGCTCATCGG
GAAGTTTGGCCTGAGCTTCGATGAATCCCGGGCACAAATGGCCCTGTGGACAGTGTGCGAGCCCCCTC
TCATGTCCACGGACCTGCGTACCATCTCCCTCAGAATATGGACATTCTCAGAACCCTCATGATCA
AAATCAATCAGGACCCCTTAGGCATCCAGGACGACGAGTCTTAAAGAGCAAATCCCATATCGAAGTGT
CAAGAGGTATCTGTCTAACCAGGCCAGTCCCTGGTTTTCTTCAGCCGACAGGACAGACATGCCTTTCCGC
TTTCATTGCTCCCTCTTGGAACTAACTACCCCAAGGCAGAGTGTATGAGGGCCAGAAGCTCTTACAG
GAGATATCTTCAGTGGTCTCCAGACTGAAGTCACTTCACTGTGATCATCAATCTTCGGGGGTTGTGAT
GTGGTACCTCTATCCCATCAAAGACCTGGGATATCCACGATGATGTCCCACTGG

ACGCGTACGCGGGCGCTCGAGCAGAACTCATCTCAGAAGAGGATCTGGCAGCAAATGATATCCTGGATT
ACAAGGATGACGACGATAAGGTTTAA



[View online »](#)

Protein Sequence: >MR206545 protein sequence
 Red=Cloning site Green=Tags(s)

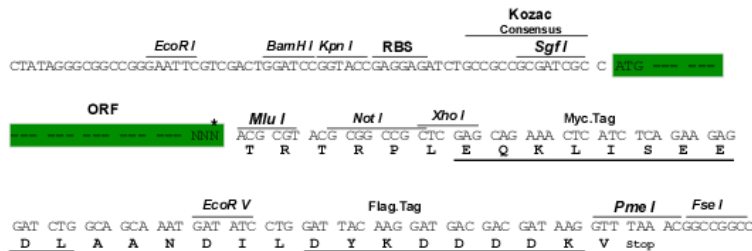
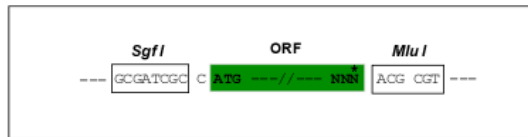
MLQKTVLLLLVAQVLMLENGLLRTPPMGWLAWERFRCNIDCVEDPKNCISERLFMEMADRLAQDGWRDL
 GYVYLNIDDCWIGGRDASGRLIPDKRFPHGIAFLADYAHSLGLKLG IYEDMGKMTCMGYPGTTLDKVEL
 DAETFAEWKVDMLKLDGCFSSSRERAEGYPKMAAALNATGRPIAFSCSWPAYEGGLPPKVNYTEVSRVCL
 LWRNYKDIQDSWKSVLSILDWFVRHQDVPQPVAGPGHWNDPDMLLIGNFGLSFDESRAQMALWTVLAAPL
 LMSTDLRTISPOQNDILQNPLMIKINQDPLGIQGRRIKSKSHIEVFKRYLSNQASALVFFSRRTDMPFR
 FHCSSLLELNYPKGRVYEGQNVFTGDI FSGLQTEVNFTVIINPSGVVMWYLYPIKDLGISTMMSHW

TRTRPLEQKLISEEDLAANDILDYKDDDDKV

Restriction Sites: SgfI-MluI

Cloning Scheme:

Cloning sites used for ORF Shuttling:



* The last codon before the Stop codon of the ORF

ACCN: NM_008669

ORF Size: 1248 bp

OTI Disclaimer: The molecular sequence of this clone aligns with the gene accession number as a point of reference only. However, individual transcript sequences of the same gene can differ through naturally occurring variations (e.g. polymorphisms), each with its own valid existence. This clone is substantially in agreement with the reference, but a complete review of all prevailing variants is recommended prior to use. [More info](#)

OTI Annotation: This clone was engineered to express the complete ORF with an expression tag. Expression varies depending on the nature of the gene.

Components: The ORF clone is ion-exchange column purified and shipped in a 2D barcoded Matrix tube containing 10ug of transfection-ready, dried plasmid DNA (reconstitute with 100 ul of water).

Reconstitution Method:

1. Centrifuge at 5,000xg for 5min.
2. Carefully open the tube and add 100ul of sterile water to dissolve the DNA.
3. Close the tube and incubate for 10 minutes at room temperature.
4. Briefly vortex the tube and then do a quick spin (less than 5000xg) to concentrate the liquid at the bottom.
5. Store the suspended plasmid at -20°C. The DNA is stable for at least one year from date of shipping when stored at -20°C.

RefSeq: [NM_008669.3](#)

RefSeq Size: 1913 bp

RefSeq ORF: 1248 bp

Locus ID: 17939

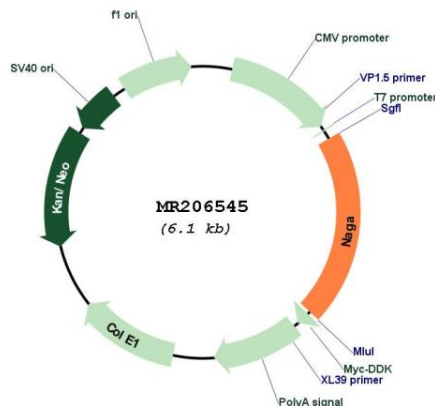
UniProt ID: [Q9QWR8](#)

Cytogenetics: 15 38.56 cM

MW: 47.2 kDa

Gene Summary: Removes terminal alpha-N-acetylgalactosamine residues from glycolipids and glycopeptides. Required for the breakdown of glycolipids (By similarity).[UniProtKB/Swiss-Prot Function]

Product images:



Circular map for MR206545