

## Product datasheet for MR206503L4

### Wdr4 (BC039272) Mouse Tagged Lenti ORF Clone

#### Product data:

Product Type:	Expression Plasmids
Product Name:	Wdr4 (BC039272) Mouse Tagged Lenti ORF Clone
Tag:	mGFP
Symbol:	Wdr4
Synonyms:	AI415180; AI448349; D530049K22Rik
Mammalian Cell Selection:	Puromycin
Vector:	pLenti-C-mGFP-P2A-Puro (PS100093)
E. coli Selection:	Chloramphenicol (34 ug/mL)
ORF Nucleotide Sequence:	The ORF insert of this clone is exactly the same as(MR206503).
Restriction Sites:	SgfI-MluI
Cloning Scheme:	

Cloning sites used for ORF Shuttling:



\* The last codon before the Stop codon of the ORF.

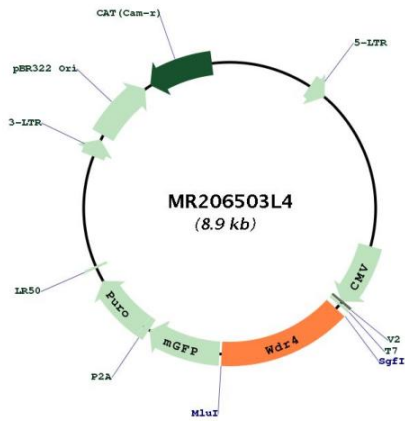
ACCN:	BC039272
ORF Size:	1239 bp



[View online »](#)

<b>OTI Disclaimer:</b>	The molecular sequence of this clone aligns with the gene accession number as a point of reference only. However, individual transcript sequences of the same gene can differ through naturally occurring variations (e.g. polymorphisms), each with its own valid existence. This clone is substantially in agreement with the reference, but a complete review of all prevailing variants is recommended prior to use. <a href="#">More info</a>
<b>OTI Annotation:</b>	This clone was engineered to express the complete ORF with an expression tag. Expression varies depending on the nature of the gene.
<b>Components:</b>	The ORF clone is ion-exchange column purified and shipped in a 2D barcoded Matrix tube containing 10ug of transfection-ready, dried plasmid DNA (reconstitute with 100 ul of water).
<b>Reconstitution Method:</b>	<ol style="list-style-type: none"><li>1. Centrifuge at 5,000xg for 5min.</li><li>2. Carefully open the tube and add 100ul of sterile water to dissolve the DNA.</li><li>3. Close the tube and incubate for 10 minutes at room temperature.</li><li>4. Briefly vortex the tube and then do a quick spin (less than 5000xg) to concentrate the liquid at the bottom.</li><li>5. Store the suspended plasmid at -20°C. The DNA is stable for at least one year from date of shipping when stored at -20°C.</li></ol>
<b>RefSeq:</b>	<a href="#">BC039272</a> , <a href="#">AAH39272</a>
<b>RefSeq Size:</b>	2054 bp
<b>RefSeq ORF:</b>	1241 bp
<b>Locus ID:</b>	57773
<b>Cytogenetics:</b>	17 B1
<b>Gene Summary:</b>	Non-catalytic component of a methyltransferase complex required for the formation of N(7)-methylguanine in a subset of RNA species, such as tRNAs, mRNAs and microRNAs (miRNAs) (PubMed:29983320). In the methyltransferase complex, it is required to stabilize and induce conformational changes of the catalytic subunit (By similarity). Required for the formation of N(7)-methylguanine at position 46 (m7G46) in tRNA (PubMed:29983320). Also required for the formation of N(7)-methylguanine at internal sites in a subset of mRNAs (By similarity). Also required for methylation of a specific subset of miRNAs, such as let-7 (By similarity). Acts as a regulator of embryonic stem cell self-renewal and differentiation (PubMed:29983320). Independently of METTL1, also plays a role in genome stability: localizes at the DNA replication site and regulates endonucleolytic activities of FEN1 (PubMed:29574139). [UniProtKB/Swiss-Prot Function]

Product images:



Circular map for MR206503L4