

## Product datasheet for MR206454

### Serpini1 (NM\_009250) Mouse Tagged ORF Clone

#### Product data:

Product Type:	Expression Plasmids
Product Name:	Serpini1 (NM_009250) Mouse Tagged ORF Clone
Tag:	Myc-DDK
Symbol:	Serpini1
Synonyms:	AI837402; Ns; PI-12; PI12; Spi17
Mammalian Cell Selection:	Neomycin
Vector:	pCMV6-Entry (PS100001)
E. coli Selection:	Kanamycin (25 ug/mL)
ORF Nucleotide Sequence:	>MR206454 ORF sequence Red=Cloning site Blue=ORF Green=Tags(s)

TTTTGTAATACGACTCACTATAGGGCGGCCGGAATTCGTCGACTGGATCCGGTACCGAGGAGATCTGCC  
GCC**CGATCGCC**

ATGACTTACCTTGGACTGCTTGGCTTGGCTTGGCCTTGCAAAGTGTGGTGACAGGGGCAACGTTCCAGATG  
AAACCATAACTGAGTGGTCAGTGAACATGTATAACCACCTTCGAGGCACCGGGGAAGATGAAACATTCT  
CTTCTCTCCACTAAGCATTGCCCTTGGCATGGGAATGATGGAGCTTGGGGCTCAAGGATCTACTAGGAAA  
GAAATCCGCCATTCAATGGGATATGAGGGTCTGAAAGGTGGTGAAGAATTTCTTCTGAGGGATTTTT  
CTAATATGGCCTCTGCCAAGAAAACCAATATGTGATGAAACTTGCCAATTCGCTCTTTGTACAAAATGG  
ATTTTCATGTCAATGAGGAATTCCTGCAAATGTTGAAAATGTACTTTAATGCAGAAGTCAATCATGTGGAC  
TTCAGTCAAAATGTGGCTGTGGCTAACTCCATCAATAAATGGGTGGAGAATTATACAAAACAGTCTGTTGA  
AAGATCTGGTGTCTCCGGAGGACTTTGATGGTGTCACTAATTTGGCCCTCATCAATGCTGTATATTTCAA  
AGGAAACTGGAAGTCTCAGTTTAGACCTGAAAATACCAGAATTTCTCCTTCACGAAAGATGATGAAAGT  
GAAGTGCAGATCCAATGATGTATCAACAAGGAGAATTTATTATGGTGAATTTAGTGATGGATCCAATG  
AGGCTGGCGGTATCTACCAAGTCCTTGAGATACCTATGAGGGAGATGAGATCAGCATGATGCTGGCACT  
GTCCAGACAGGAAGTCCCACTGGCCACACTGGAGCCTCTGCTCAAAGCACAGTGTATCGAAGAATGGGCA  
AACTCTGTGAAGAAACAAAAGGTGGAAGTGTACTTGCCAGTTCACTGTGGAACAGGAAATTTGATTTAA  
AAGACATCTTGAAAGCCCTTGGGGTCACTGAAATTTTCATCAAAGATGCAAATTTGACTGCCATGTCAGA  
TAAGAAAGAGCTGTTCTCTCCAAGCTGTTCAACAAGTCCTGCATTGAGGTTAATGAAGAAGGGTCAGAA  
GCCGCTGCAGCCTCCGGAATGATTGCGATTAGTAGGATGGCTGTGCTGTACCCTCAGGTTATTGTGACCC  
ATCCATTTCTCTATCTTATCAGGAACAGGAAATCTGGCATAATCTTATTCATGGGACGAGTCATGAACCC  
TGAACAATGAATACAAGTGGCCATGACTTTGAGGAACTT

**ACGGT**ACGGCGCCGCTCGAGCAGAAACTCATCTCAGAAGAGGATCTGGCAGCAAATGATATCCTGGATT  
ACAAGGATGACGACGATAAGGTTTAA



[View online »](#)

**Protein Sequence:** >MR206454 protein sequence  
 Red=Cloning site Green=Tags(s)

MTYLGLLALLALQSVVTGATFPDETITEWSVNMYNHLRGTGEDENILFSPLSIALAMGMELGAQGSTRK  
 EIRHSMGYEGLKGGEEFSLRDFSNMASAEENQYVMKLANSLFVQNGFHVNEEFQMLKMYFNAEVNHVD  
 FSQNVAVANSINKWVENYTNLLKDLVSPEDFDGVTNLALINAVYFKGNWKSQFRPENTRTFSFTKDDDES  
 EVQIPMMYQQGEFYGFSDGSNEAGGIYQVLEIPYEGDEISMMLALSRQEVPLATLEPLLKAQLIEEWA  
 NSVKKQKVEVYLPRTVEQEIDLKDKALGVTEIFIKDANLTAMSDKKELFLSKAVHKSCIEVNEEGSE  
 AAAASGMIAISRMAVLYPQVIVDHPFLYLIRNRKSGIILFMGRVMNPETMNTSGHDFEEL

TRTRPLEQKLISEEDLAANDILDYKDDDDKV

**Restriction Sites:**

SgfI-MluI

**Cloning Scheme:**

Cloning sites used for ORF Shuttling:



\* The last codon before the Stop codon of the ORF

**ACCN:** NM\_009250

**ORF Size:** 1233 bp

**OTI Disclaimer:** The molecular sequence of this clone aligns with the gene accession number as a point of reference only. However, individual transcript sequences of the same gene can differ through naturally occurring variations (e.g. polymorphisms), each with its own valid existence. This clone is substantially in agreement with the reference, but a complete review of all prevailing variants is recommended prior to use. [More info](#)

**OTI Annotation:** This clone was engineered to express the complete ORF with an expression tag. Expression varies depending on the nature of the gene.

**Components:** The ORF clone is ion-exchange column purified and shipped in a 2D barcoded Matrix tube containing 10ug of transfection-ready, dried plasmid DNA (reconstitute with 100 ul of water).

**Reconstitution Method:**

1. Centrifuge at 5,000xg for 5min.
2. Carefully open the tube and add 100ul of sterile water to dissolve the DNA.
3. Close the tube and incubate for 10 minutes at room temperature.
4. Briefly vortex the tube and then do a quick spin (less than 5000xg) to concentrate the liquid at the bottom.
5. Store the suspended plasmid at -20°C. The DNA is stable for at least one year from date of shipping when stored at -20°C.

**RefSeq:** [NM\\_009250.1](#), [NM\\_009250.2](#), [NP\\_033276.1](#)

**RefSeq Size:** 3133 bp

**RefSeq ORF:** 1233 bp

**Locus ID:** 20713

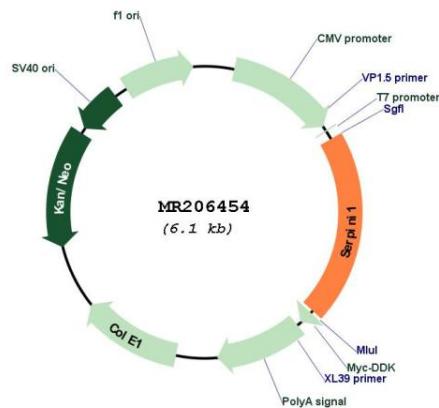
**UniProt ID:** [O35684](#)

**Cytogenetics:** 3 E3

**MW:** 46.3 kDa

**Gene Summary:** Serine protease inhibitor that inhibits plasminogen activators and plasmin but not thrombin (PubMed:9364046, PubMed:11557034). May be involved in the formation or reorganization of synaptic connections as well as for synaptic plasticity in the adult nervous system. May protect neurons from cell damage by tissue-type plasminogen activator (Probable). [UniProtKB/Swiss-Prot Function]

### Product images:



Circular map for MR206454