

Product datasheet for **MR206441**

Tgfb3 (NM_009368) Mouse Tagged ORF Clone

Product data:

Product Type:	Expression Plasmids
Product Name:	Tgfb3 (NM_009368) Mouse Tagged ORF Clone
Tag:	Myc-DDK
Symbol:	Tgfb3
Synonyms:	TGF-beta-3; Tgfb-3
Mammalian Cell Selection:	Neomycin
Vector:	pCMV6-Entry (PS100001)
E. coli Selection:	Kanamycin (25 ug/mL)
ORF Nucleotide Sequence:	>MR206441 ORF sequence Red=Cloning site Blue=ORF Green=Tags(s)

TTTTGTAATACGACTCACTATAGGGCGGCCGGAATTCGTCGACTGGATCCGGTACCGAGGAGATCTGCCGCC**CGATCGCC**

ATGAAGATGCACTTGCAAAGGGCTCTGGTAGTCTGGCCCTGCTGAACTTGGCCACAATCAGCCTCTCTC
TGTCCACTTGACCACGTTGGACTTCGGCCACATCAAGAAGAAGAGGGTGAAGCCATTAGGGGACAGAT
CTTGAGCAAGCTCAGGCTCACCAGCCCCCTGAGCCATCGGTGATGACCCACGTCCCCTATCAGGTCTG
GCACTTTACAACAGCACCCGGGAGTTGCTGGAAGAGATGCACGGGAGAGGGAGGAAGGCTGCACTCAGG
AGACCTCGGAGTCTGAGTACTATGCCAAAGAGATCCATAAATTCGACATGATCCAGGGCTGGCGGAGCA
CAATGAACTGGCCGTTTGCSCCAAAGGAATTACCTCTAAGGTTTTTCGTTTTCAATGTGTCCTCAGTGGAG
AAAAATGGAACCAATCTGTTCCGGGCAGAGTTCGGGTCTTGGCGGTGCCCAACCCAGCTCCAAGCGCA
CAGAACAGAGAATTGAGCTCTTCCAGATACTTCGACCGGATGAGCACATAGCCAAGCAGCGCTACATAGG
TGGCAAGAATCTGCCACAAGGGCACCCTGAGTGGCTGCTTTTCGATGTCACTGACACTGTGCGCGAG
TGGCTGTTGAGGAGAGTCCAACCTGGGTCTGGAAATCAGCATCCACTGTCCATGTACACCTTTCAGC
CCAATGGAGACATACTGGAAAATGTTTCATGAGGTGATGGAATCAAATTCAAAGGAGTGGACAATGAAGA
TGACCATGGCCGTGGAGACCTGGGGCGTCTCAAGAAGCAGAAGGATCACCACAACCCACACCTGATCCTC
ATGATGATCCCCCACCCGACTGGACAGCCAGGCCAGGTAGTCAGAGGAAGAAGGGCCCTGGACA
CCAATTACTGCTTCCGCAACCTGGAGGAGAAGTCTGTGTACGCCCTTTATATTGACTTCCGGCAGGA
TCTAGGCTGGAATGGTCCACGAACCTAAGGGTACTATGCCAACTTCTGCTCAGGCCCTTGCCATAC
CTCCGAGCGCAGACACAACCCATAGCACGGTGTGGACTATACAACCCCTGAACCCAGAGGCGTCTG
CCTCGCCATGCTGCGTCCCCAGGACCTGGAGCCCTGACCATCTGTACTATGTGGCAGAACCCCAA
GGTGGAGCAGCTGTCCAACATGGTGGTGAAGTCGTGTAAGTGCAGC

ACGCGTACGCGGCCGCTCGAGCAGAACTCATCTCAGAAGAGGATCTGGCAGCAATGATATCCTGGATT
ACAAGGATGACGACGATAAGGTTTAA



[View online >](#)

Protein Sequence: >MR206441 protein sequence
 Red=Cloning site Green=Tags(s)

MKMHLQRALVVLALLNLATISLSLSTCTLDFGHIKKRVEAIRGQILSKLRLTSPPEPSVMTHVPYQVL
 ALYNSTRELLEEMHGEREEGCTQETSESEYYAKEIHKFDMIQGLAEHNELAVCPKGITSKVFRFNVSSE
 KNGTNFLFRAEFRVLRVNPSSKRTEQRIELFQILRPDEHIAKQRYIGGNLPTRGTAEWLSFDVTDTVRE
 WLLRRESNLGLEISIHCPCHTFQPNGDILENVHEVMEIKFKGVDNEDDHGRGDLGRLKKQKDHHPHLIL
 MMIPPHRLDSPGQGSQRKKRALDTNYCFRNLEENCCVRPLYIDFRQDLGWKWWHEPKGYANFCSGPCPY
 LRSADTTHTVGLYNTLNPEASASPCCVPQDLEPLTILYYVGRTPKVEQLSNMVKSKCS

TRTRPLEQKLISEEDLAANDILDYKDDDDKV

Restriction Sites:

Sgfl-MluI

Cloning Scheme:

Cloning sites used for ORF Shuttling:



* The last codon before the Stop codon of the ORF

ACCN: NM_009368

ORF Size: 1239 bp

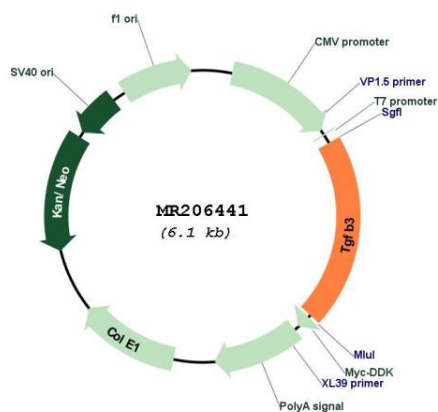
OTI Disclaimer: Due to the inherent nature of this plasmid, standard methods to replicate additional amounts of DNA in E. coli are highly likely to result in mutations and/or rearrangements. Therefore, OriGene does not guarantee the capability to replicate this plasmid DNA. Additional amounts of DNA can be purchased from OriGene with batch-specific, full-sequence verification at a reduced cost. Please contact our customer care team at custsupport@origene.com or by calling 301.340.3188 option 3 for pricing and delivery.

The molecular sequence of this clone aligns with the gene accession number as a point of reference only. However, individual transcript sequences of the same gene can differ through naturally occurring variations (e.g. polymorphisms), each with its own valid existence. This clone is substantially in agreement with the reference, but a complete review of all prevailing variants is recommended prior to use. [More info](#)

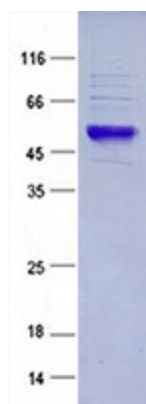
OTI Annotation: This clone was engineered to express the complete ORF with an expression tag. Expression varies depending on the nature of the gene.

Components:	The ORF clone is ion-exchange column purified and shipped in a 2D barcoded Matrix tube containing 10ug of transfection-ready, dried plasmid DNA (reconstitute with 100 ul of water).
Reconstitution Method:	<ol style="list-style-type: none">1. Centrifuge at 5,000xg for 5min.2. Carefully open the tube and add 100ul of sterile water to dissolve the DNA.3. Close the tube and incubate for 10 minutes at room temperature.4. Briefly vortex the tube and then do a quick spin (less than 5000xg) to concentrate the liquid at the bottom.5. Store the suspended plasmid at -20°C. The DNA is stable for at least one year from date of shipping when stored at -20°C.
RefSeq:	<u>NM_009368.3</u> , <u>NP_033394.2</u>
RefSeq Size:	3401 bp
RefSeq ORF:	1239 bp
Locus ID:	21809
Cytogenetics:	12 40.09 cM
MW:	47.1 kDa
Gene Summary:	<p>This gene encodes a secreted ligand of the TGF-beta (transforming growth factor-beta) superfamily of proteins. Ligands of this family bind various TGF-beta receptors leading to recruitment and activation of SMAD family transcription factors that regulate gene expression. The encoded preproprotein is proteolytically processed to generate a latency-associated peptide (LAP) and a mature peptide, and is found in either a latent form composed of a mature peptide homodimer, a LAP homodimer, and a latent TGF-beta binding protein, or in an active form consisting solely of the mature peptide homodimer. The mature peptide may also form heterodimers with other TGF-beta family members. This protein is involved in embryogenesis and cell differentiation, and may play a role in wound healing. Homozygous knockout mice for this gene exhibit cleft palate, delayed pulmonary development and neonatal death. [provided by RefSeq, Aug 2016]</p>

Product images:



Circular map for MR206441



Coomassie blue staining of purified Tgfb3 protein (Cat# [TP506441]). The protein was produced from HEK293T cells transfected with Tgfb3 cDNA clone (Cat# MR206441) using MegaTran 2.0 (Cat# [TT210002]).