

## Product datasheet for MR206427

### Cdc42ep1 (NM\_027219) Mouse Tagged ORF Clone

#### Product data:

Product Type:	Expression Plasmids
Product Name:	Cdc42ep1 (NM_027219) Mouse Tagged ORF Clone
Tag:	Myc-DDK
Symbol:	Cdc42ep1
Synonyms:	1810058K22Rik; AA980734; Borg5; CEP1; MSE55
Mammalian Cell Selection:	Neomycin
Vector:	pCMV6-Entry (PS100001)
E. coli Selection:	Kanamycin (25 ug/mL)
ORF Nucleotide Sequence:	>MR206427 ORF sequence Red=Cloning site Blue=ORF Green=Tags(s)

TTTTGTAATACGACTCACTATAGGGCGCCGGGAATTCGTCGACTGGATCCGGTACCGAGGAGATCTGCC  
GCC**GCGATCGCC**

ATGCCCGGTCCCCAGGGGGGCACAGGAGCCCCACCATGAGCCTGGGCAAGCTGTCTCCTGTGGGATGGG  
TGTCCAGTTCCCATGGAAAGAGACGCCTGACAGCAGACATGATCAGCCCCCACTTGGGGACTTCCGCCA  
CACCATGCACGTAGGCCGTGGTGGGGATGTCTTCGGAGATACGTCCTTCTCAGCAACCACGGAGGCCGC  
TCTGAAAACACCACCGCTCACCCGAAGTTTCTGGCCAGGAAGCTCCAACAGGTTCCGAGAGTCGGGG  
TGCCACCTCGAAGGATGGCTTCCCCGGCTGCACCATCACCTGCTCCGCCTCCATCTCGCCCATCATCAA  
GAACGCCATCTCCCTGCCTCAGCTCAACCAGGCCACCTATGACAGTCTGGTGATGGGCAAGCTTAGTTTT  
GACAGCAGCCGGCTAGCTCCACAGATGGCCACTCTGGTTACGGCCTGGAGTCTGGCTTCTGTACCATCT  
CACGCCTGCCACGCGTGGAAAAGCACAGCAACCGTGACCGTGACCGTGACCCGGACCATCTCAAGACCG  
AGAGCAAAGTTCTTCCCTCTGAGCCTACCCCTAACCCCTGAGCTCCGACGCTCTGACTCTCTTTGTCC  
TTCCGTTTTGACCTTGACCTTGGGCCCTCACTCCTCAGTGAGCTGCTAGGGGTATGAGCCTTTCAGAAG  
CTCCAGCTGCTGAACTCCAGTCCCTACTGCCAACCCCTGCTCCTGCAGCAAACCTGCCCTACTGC  
AAAACCCAGCCCATGCGATAACCCTCTAGATGCTGTGACAAGCCTCCAGCCTCTGCTGTGACAAGC  
CTTCCAGCCCCGCGGGCAGCTCCCCATCCCGTGGACATTTCCCAATGGGGTAACCTCTGTGTTGG  
GCCCTGCGGCTGAGGCAAAGCCAGTCTGTGGGAGAGGGTCCCAGGTACCCTCCAACATGACCTTTGA  
CAGGCATGGAGCCAGCTGGGGGGCCAGCCGGGCCAGCTGGGGGGCCAGCCGGGCCAGCCGCCACTACACT  
GAGATGGATGCCCGGGGAGCTGGCAGGGGTGTACCCCAAGTTCATGGCTCCTGGGAGAGTCTGAATG  
AAGACTGGAGCACGCCTCCAGCCAGTGTGAGGGCTCCTGTGCCACCTCGGTGCAGGTCAATGCCTTTGA  
GTTTGCTGATGCTGAGGAAGATGACGAGGTCAAGGTG

AG**CGGACCG**ACGCGTACGCGGCCGCTCGAGCAGAACTCATCTCAGAAGAGGATCTGGCAGCAAATGATATCC  
TGGATTACAAGGATGACGACGATAAGGTTTAA



**Protein Sequence:** >MR206427 protein sequence  
Red=Cloning site Green=Tags(s)

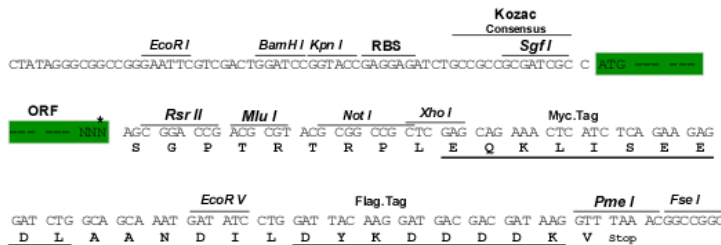
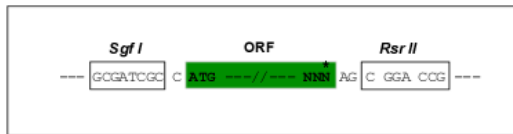
MPGPQGGTGAPTMSLGLSPVGVWSSSHGKRRLTADMISPPLGDFRHTMHVGRGGDVFGDTSFLSNHGGR  
 SGNTHRSRPSFLARKLQVRRVGVPPRRMASPAAPSPAPPPISPIIKNAISLPQLNQATYDSLVMGKLSF  
 DSTPASSTDGHSGYGLSEGFCTISRLPRVEKHSNRDRDRDPDHSQDREQSSFPSEPTPNPELRRSDLLS  
 FRFDLGLGPSLLSELLGVMSLSEAPAAETPVPTANPPAPAANPAPTAKPPAHAITTLDAVTSLPASAVTS  
 LPAPAAAASSPSRGHFPNGVTSVLGPAAEAKPSPVGEQPVSNMTFDRHGASWGASRASWGASRASRHYT  
 EMDARRELAGVLPQVHGSWESLNEDWSTPPASVRAPVPTSVQVNAFEFADAEEDEVKV

SGPTRTRPLEQKLISEEDLAANDILDYKDDDDKV

**Restriction Sites:** SgfI-RsrII

**Cloning Scheme:**

Cloning sites used for ORF Shutting:



\* The last codon before the Stop codon of the ORF

**ACCN:** NM\_027219

**ORF Size:** 1230 bp

**OTI Disclaimer:** The molecular sequence of this clone aligns with the gene accession number as a point of reference only. However, individual transcript sequences of the same gene can differ through naturally occurring variations (e.g. polymorphisms), each with its own valid existence. This clone is substantially in agreement with the reference, but a complete review of all prevailing variants is recommended prior to use. [More info](#)

**OTI Annotation:** This clone was engineered to express the complete ORF with an expression tag. Expression varies depending on the nature of the gene.

**Components:** The ORF clone is ion-exchange column purified and shipped in a 2D barcoded Matrix tube containing 10ug of transfection-ready, dried plasmid DNA (reconstitute with 100 ul of water).

**Reconstitution Method:**

1. Centrifuge at 5,000xg for 5min.
2. Carefully open the tube and add 100ul of sterile water to dissolve the DNA.
3. Close the tube and incubate for 10 minutes at room temperature.
4. Briefly vortex the tube and then do a quick spin (less than 5000xg) to concentrate the liquid at the bottom.
5. Store the suspended plasmid at -20°C. The DNA is stable for at least one year from date of shipping when stored at -20°C.

**RefSeq:** [NM\\_027219.1](#), [NM\\_027219.2](#), [NM\\_027219.3](#), [NP\\_081495.1](#)

**RefSeq Size:** 2542 bp

**RefSeq ORF:** 1230 bp

**Locus ID:** 104445

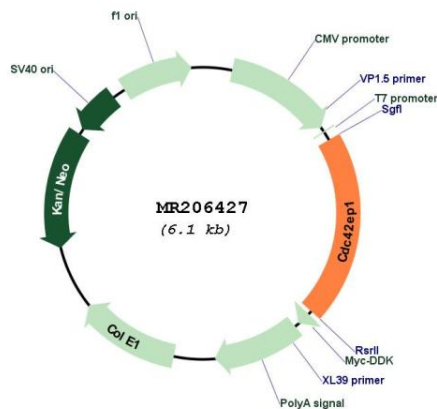
**UniProt ID:** [Q91W92](#)

**Cytogenetics:** 15 E1

**MW:** 43.1 kDa

**Gene Summary:** Probably involved in the organization of the actin cytoskeleton. Induced membrane extensions in fibroblasts (By similarity).[UniProtKB/Swiss-Prot Function]

### Product images:



Circular map for MR206427