

Product datasheet for MR206380

Pisd (NM_177298) Mouse Tagged ORF Clone

Product data:

Product Type:	Expression Plasmids
Product Name:	Pisd (NM_177298) Mouse Tagged ORF Clone
Tag:	Myc-DDK
Symbol:	Pisd
Synonyms:	9030221M09Rik
Mammalian Cell Selection:	Neomycin
Vector:	pCMV6-Entry (PS100001)
E. coli Selection:	Kanamycin (25 ug/mL)
ORF Nucleotide Sequence:	>MR206380 ORF sequence Red=Cloning site Blue=ORF Green=Tags(s)

TTTTGTAATACGACTCACTATAGGGCGGCCGGGAATTCGTCGACTGGATCCGGTACCGAGGAGATCTGCC
GCC**CGATCGCC**

ATGGCGCGTCTGGGGCGCGCGTGTGTGCGCTCGTTCGTGGAGGTGTGCTGTGGCGGAGCAGCCCT
GTCACTATGAATCTACTGCCACAGCCATTTTCTGGGGACCTTACAGAAATTGCCTCTTCAGGCAGGTGT
CAGAAATTTCCATACTGCTCCTGTCCGATCCTTGTTCCTGCTGCGCCCTGTGCCATCCTGTTGGCAACA
GGTGGAGGTATGCCGGTACCGGCAGTATGAGAAGTACAGGGAACGGAAGCTTGAGAAGCTGGGCTTGG
AGATCCCGCCAACTTGTAGTCACTGGGAGGTGCCCTGTATAAATCTGTGCCAACCGTTTTGCTGTC
ACGTGCCTGTGGTCGCCCAACCAAGTAGAACTTCCTTACTGGCTCCGGAGGCCAGTCTACAGCCTGTAT
ATCTGGACCTTTGGGGTGAACATGACTGAGGCTGCAGTGGAGGACCTGCACCACTACCGCAACCTCAGCG
AGTTCTCCGGCGTAAGCTGAAGCCTCAGGCACGGCCCGTATGTGGCTTGCAGTGTGACCAGCCCATC
AGATGGCAAGATCCTCACCTTTGGGCAGGTGAAGAACTCTGAGGTGGAGCAGGTAAGGGCGTAACCTAC
TCCTTGGAGTCCTTCTGGGCCCTCGAGCCAATACAGAGGACCTGCCCTTCCCTCCAGCTTCTCCAGTG
ACTCCTCAGAAACAGCTGGTCACCCGGGAAGGGAATGAGCTGTACCACTGTGCATCTACCTGGCCCC
AGGAGACTACCACTGCTTCCACTCCCCACTGACTGGACCATCTCACATCGGCGCACTTCCCAGGTTCC
CTGATGTCAGTGAACCTGGCATGGCCCGATGGATCAAAGAGCTTTTTGTCACAATGAGCGTGTAGTCC
TAACTGGAGACTGGAACATGGGTTCTTCTCGTTGACAGCAGTGGGAGCCACCAATGTGGGCTCTATCCG
TATCCACTTTGACCGAGACCTGCACACAACAGCCCCAGGTACAGCAAGGGCTCTACAATGACCTGAGC
TTTGTAAACATGCCAACAAGGAGGGCATTCCCATGCGCAAGGGTGGAGCCCTGGGGAGTTCAACCTGG
GCTCCACCATCGTGTCTATCTTCGAGGCACCCAAGGACTTCAACTTCAGGCTGAAGGCAGGGCAGAAGAT
CCGCTTTGGGAAGCACTGGGCTCCCTC

AG**CGGACCG**ACGCGTACGCGGCCGCTCGAGCAGAACTCATCTCAGAAGAGGATCTGGCAGCAAATGATATCC
TGGATTACAAGGATGACGACGATAAGGTTTAA



[View online »](#)

Protein Sequence: >MR206380 protein sequence
Red=Cloning site Green=Tags(s)

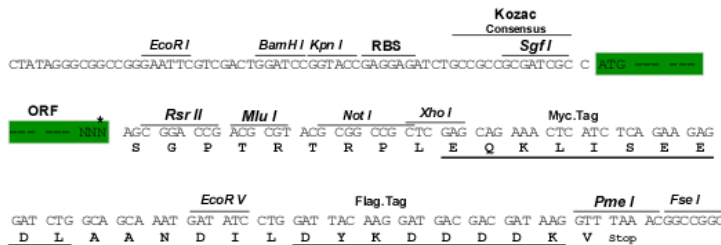
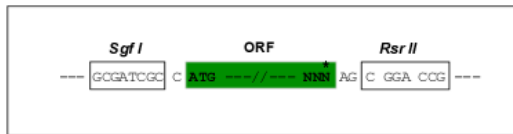
MAASGGRACVRSRLRGGVLRSSPCHYESTATRHFLGTLQKLPLQAGVRNFHTAPVRSFLLRPVPILLAT
GGGYAGYRQYEKYRERKLEKLEIPPKLASHWEVSLYKSVPTRLLSRACGRLNQVELPYWLRPVSLSY
IWTFGVNMTEAAVEDLHHRNLSEFFRRKLPQARPVCGLHCVTSPSDGKILTFGQVKNSEVEQVKGVTY
SLESFLGPRANTEDLPFPASSSDSFRNQLVTREGNELYHCVIYLAPGDYHCFHSPTDWTISHRRHFPGS
LMSVNPGMARWIKELFCHNERVVLTDGDKHGFFSLTAVGATNVGSIIRIHFDRDLHTNSPRYSKGSYNDLS
FVTHANKEGIPMRKGEPLGEFNLGSTIVLIFEAPKDFNFRLKAGQKIRFGEALGSL

SGPTRTRPLEQKLISEEDLAANDILDYKDDDDKV

Restriction Sites: SgfI-RsrII

Cloning Scheme:

Cloning sites used for ORF Shutting:



* The last codon before the Stop codon of the ORF

ACCN: NM_177298

ORF Size: 1221 bp

OTI Disclaimer: The molecular sequence of this clone aligns with the gene accession number as a point of reference only. However, individual transcript sequences of the same gene can differ through naturally occurring variations (e.g. polymorphisms), each with its own valid existence. This clone is substantially in agreement with the reference, but a complete review of all prevailing variants is recommended prior to use. [More info](#)

OTI Annotation: This clone was engineered to express the complete ORF with an expression tag. Expression varies depending on the nature of the gene.

Components: The ORF clone is ion-exchange column purified and shipped in a 2D barcoded Matrix tube containing 10ug of transfection-ready, dried plasmid DNA (reconstitute with 100 ul of water).

Reconstitution Method:

1. Centrifuge at 5,000xg for 5min.
2. Carefully open the tube and add 100ul of sterile water to dissolve the DNA.
3. Close the tube and incubate for 10 minutes at room temperature.
4. Briefly vortex the tube and then do a quick spin (less than 5000xg) to concentrate the liquid at the bottom.
5. Store the suspended plasmid at -20°C. The DNA is stable for at least one year from date of shipping when stored at -20°C.

RefSeq: [NM_177298.3](#), [NP_796272.2](#)

RefSeq Size: 2150 bp

RefSeq ORF: 1221 bp

Locus ID: 320951

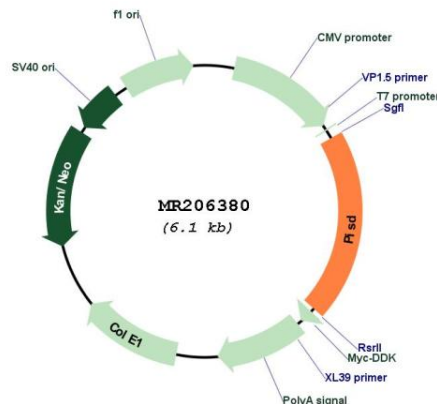
UniProt ID: [Q8BSF4](#)

Cytogenetics: 5 B1

MW: 45.9 kDa

Gene Summary: Catalyzes the formation of phosphatidylethanolamine (PtdEtn) from phosphatidylserine (PtdSer). Plays a central role in phospholipid metabolism and in the interorganelle trafficking of phosphatidylserine.[UniProtKB/Swiss-Prot Function]

Product images:



Circular map for MR206380