

## Product datasheet for **MR206363**

### Dazap1 (NM\_001122604) Mouse Tagged ORF Clone

#### Product data:

Product Type:	Expression Plasmids
Product Name:	Dazap1 (NM_001122604) Mouse Tagged ORF Clone
Tag:	Myc-DDK
Symbol:	Dazap1
Synonyms:	2410042M16Rik; mPrRp
Mammalian Cell Selection:	Neomycin
Vector:	pCMV6-Entry (PS100001)
E. coli Selection:	Kanamycin (25 ug/mL)
ORF Nucleotide Sequence:	>MR206363 ORF sequence Red=Cloning site Blue=ORF Green=Tags(s)

TTTTGTAATACGACTCACTATAGGGCGGCCGGAATTCGTCGACTGGATCCGGTACCGAGGAGATCTGCC  
GCC**CGATCGCC**

ATGAACAGCGGGCGCCGACGAAATCGGGAAGCTCTTTGTGGCGGCCTGGACTGGAGTACCACTCAAG  
AGACTCTACGCAGCTACTTTCCAGTATGGTGGGTTGTGGATTGTGTCATCATGAAAGATAAACCCAC  
CAACCAGTCTAGAGGCTTTGGATTTGTCAAGTTTAAAGACCCCAATTGTGTGGGGACAGTCTGGCCAGC  
AGACCACACACCCTAGATGGCCGAAATATCGACCCGAAGCCGTGCACACCTCGGGGATGCAGCCAGAGC  
GAACACGGCCCAAGGAAGGCTGGCAGAAAGGACCCAGGAGCGACAGCAGCAAATCCAACAAGATCTTTGT  
CGGGGGCATTCCCACAACCTGCGGGGAGACGGAGCTCAGGGAGTACTTCAAGAAGTTTGGAGTGGTCACA  
GAGGTGGTTATGATCTATGATGCGGAGAAGCAGCGGCCTCGAGGTTTTGGATTTATTACTTTTCGAGGACG  
AACAAATCAGTGGACCAGGCTGTCAACATGCATTTTACGACATCATGGGCAAAAAAGTGGAGGTTAAACG  
GGCTGAACCACGGGACAGCAAGAATCAAGCTCCAGGACAGCCAGGAGCCAGCCAGTGGGGCAGCCGCGTG  
GCGCCAGTGCAGCCAACGGCTGGGCAGGCCAGCCCCGCCCACGTGGCAACAAGGATATGGCCACAAG  
GAATGTGGGTGCCAGCAGGACAGGCCATTGGTGGCTATGGCCACCCCTGCGGGCAGAGGAGCCCCGCC  
CCCCCCCCACCCTTACCTCCTACATTGTATCCACACCCGCTGGAGGCTTCCCCCACCACAGGGCTTC  
CCACAGGCTATGGCGCCCCACCACAGTTCAGTTTTGGCTACGGTCTCCTCCCCACCCCTGATCAGT  
TTGCCCTCCAGGGTCCCTCCTCCACCTGCCACCCAGGGGTGCCCGCTGGCCCTTCCACACCTCC  
GTCTCAGGCTGCCCCAGACATGAGCAAACCCCAACAGCCAGCCGACTTCCCCATGGTCAATATGGT  
TACGGGACGACTTGAGTGGCTTCGGCCAGGGCTTCTCGACCCAGCCAGCAGCCGCCCTCCTATGGG  
GCCCTCTGTACCAGTTTCGGGGGTCCCCCGCTGGCGCAGTGGCTTCGGACGCGGGCAGAACCACAA  
CGTGCAGGGCTTCCATCCCTACCGGCGC

**ACGCGT**ACGCGGCCGCTCGAGCAGAACTCATCTCAGAAGAGGATCTGGCAGCAAATGATATCTGGATT  
ACAAGGATGACGACGATAAGGTTTAA



[View online »](#)

**Protein Sequence:** >MR206363 protein sequence  
 Red=Cloning site Green=Tags(s)

MNSAGADEIGKLFVGGLDWSTTQETLSYFSQYGEVDCVIMKDKTTNQRSRGGFVKFKDPNCVGTVLAS  
 RPHTLDGRNIDPKPCTPRGMQPERTRPKEGWQKGPSSDSSKSNKIFVGGIPHCGETELREYFKFGVVT  
 EVVMIYDAEKQRPRGFGFITFEDEQSVDAQVNMHFHDMGKKVEVKRAEPRDSKNQAPGQPGASQWGSRV  
 APSAANGWAGQPPPTWQQYGPQGMWVPAGQAIIGYGPPPAGRGAPPPPPFTSYIVSTPPGGFPPPQGF  
 PQGYGAPPQFSFGYGGPPPPDQFAPPGVPPPPATPGAAPLAFPPPPSQAAPDMSKPPTAQPDFPYGYG  
 YGQDLSGFGQGFSDPSQQPPSYGGPSVPGSGGPPAGGSGFGRGQNHNVQGFHPYRR

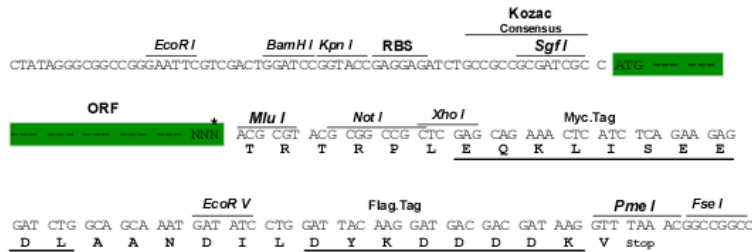
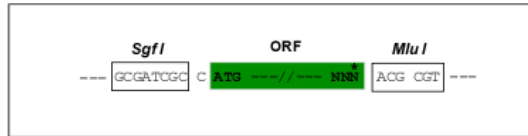
TRTRPLEQKLISEEDLAANDILDYKDDDDKV

**Restriction Sites:**

Sgfl-MluI

**Cloning Scheme:**

Cloning sites used for ORF Shuttling:



\* The last codon before the Stop codon of the ORF

**ACCN:** NM\_001122604

**ORF Size:** 1221 bp

**OTI Disclaimer:** The molecular sequence of this clone aligns with the gene accession number as a point of reference only. However, individual transcript sequences of the same gene can differ through naturally occurring variations (e.g. polymorphisms), each with its own valid existence. This clone is substantially in agreement with the reference, but a complete review of all prevailing variants is recommended prior to use. [More info](#)

**OTI Annotation:** This clone was engineered to express the complete ORF with an expression tag. Expression varies depending on the nature of the gene.

**Components:** The ORF clone is ion-exchange column purified and shipped in a 2D barcoded Matrix tube containing 10ug of transfection-ready, dried plasmid DNA (reconstitute with 100 ul of water).

**Reconstitution Method:**

1. Centrifuge at 5,000xg for 5min.
2. Carefully open the tube and add 100ul of sterile water to dissolve the DNA.
3. Close the tube and incubate for 10 minutes at room temperature.
4. Briefly vortex the tube and then do a quick spin (less than 5000xg) to concentrate the liquid at the bottom.
5. Store the suspended plasmid at -20°C. The DNA is stable for at least one year from date of shipping when stored at -20°C.

**RefSeq:** [NM\\_001122604.2](#)

**RefSeq Size:** 2096 bp

**RefSeq ORF:** 1221 bp

**Locus ID:** 70248

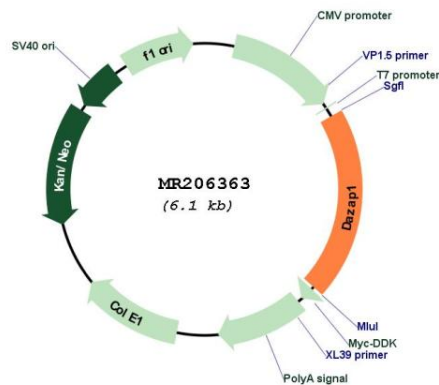
**UniProt ID:** [Q9JII5](#)

**Cytogenetics:** 10 C1

**MW:** 43.2 kDa

**Gene Summary:** RNA-binding protein, which may be required during spermatogenesis.[UniProtKB/Swiss-Prot Function]

### Product images:



Circular map for MR206363