

Product datasheet for MR206327

Cant1 (NM_001025617) Mouse Tagged ORF Clone

Product data:

Product Type:	Expression Plasmids
Product Name:	Cant1 (NM_001025617) Mouse Tagged ORF Clone
Tag:	Myc-DDK
Symbol:	Cant1
Synonyms:	5830420C20Rik; Apy; Apy1h; D11Bwg0554e; Entpd8; SCA; SCAN-1; Sh; Shapy
Mammalian Cell Selection:	Neomycin
Vector:	pCMV6-Entry (PS100001)
E. coli Selection:	Kanamycin (25 ug/mL)
ORF Nucleotide Sequence:	>MR206327 ORF sequence Red=Cloning site Blue=ORF Green=Tags(s)

TTTTGTAATACGACTCACTATAGGGCGGCCGGGAATTCGTCGACTGGATCCGGTACCGAGGAGATCTGCC
GCC**CGATCGCC**

ATGCCATCCAGCCCTTTGACCAGCGGGAATGGAATGAGCCTATGCACTCCCTCCGGATCAGTGTAGGGG
GCCTTCTGTGCTGGCATCCATGACCAAGGCCACGGACCCTCGCTTCCGCCCCGCTGGCGGGTATCCT
CACGTCTTTGTGGTGTGCCCTCTCTGGCTGCTGTACTCCACCATCAGGGCCAGTGCCAGGCAGG
CCCCCACCACAATGCGACAATTGGAGGCTCAGCCAGCAGCGCATCTCTATTACAACGACACCTACC
CCCTCTCCCCCACAGAGGACTCCAGGTGGGATTCGGTACCGAATCGCAGTCATTGCTGACTTGGACAC
GGGTCCAGGGCCAGGAAGAAAACACTTGGTTTTAGCTACCTTAAGAAAGGCTACCTGACCTGTGGAC
AGCGGGGACAGGGTCAGCGTGGAGTGGGATAAAGACCACGGGGTCTAGAGTCCCACCTGGCAGAAAAGG
GGCGGGGCATGGAGCTCTCAGACCTGATTGCTTCAATGGGAACTCTACTCCGTGGATGACCGCACAGG
GGTCATCTACCAGATCGAAGGCACCAAAGCAGTGCCCTGGGTGATCCTTTCTGATGGCGATGGAAGTGTG
GAGAAGGGTTTCAAAGCTGAATGGCTTGTGTGAAGGACGAAACCTGTATGTGGCGCCCTGGGCAAGG
AGTGGACCACCACGACAGGGGAGGTGATGAACGAGAACCCTGAGTGGGTGAAGGTGGTAGGCCACAGGG
CAGTGTGGACCACGAGAAGTGGGTGTCCAGCTACAACGCCCTGAGAGCAGCCGCCGGGATCCGACCACCA
GGCTACCTCATTACGAGTCCGCTGCTGGAGCGACACTGCAGCGCTGTTCTTCTGCCTCGTCGGG
CTAGCCACGAACGCTACAGCGAGAAGGACGATGAACGCAAGGGCAGCAACCTCCTGCTGAGCGCAGCCCA
GGACTTCAGGGACATCTCTGTGAGGCAAGTGGGACTCTGATCCCCACCCACGGTTCTCATCCTTCAAG
TTCATCCCCAACCGGATGACCAGATCATTGTGGCTCTCAAGTCGGAAGAGGACAATGGCAGAATCGCCA
CCTATGTCATGGCCTTACGCTGGACGGCCGCTTCTGCTTCCAGAGACCAAGATCGGCACTGTGAAGTA
CGAAGGAATAGAGTTCATC

ACGGTACGGGCCGCTCGAGCAGAACTCATCTCAGAAGAGGATCTGGCAGCAATGATATCCTGGATT
ACAAGGATGACGACGATAAGGTTTAA



Protein Sequence: >MR206327 protein sequence
 Red=Cloning site Green=Tags(s)

MPIQPFQREWNEPMHSLRISVGGLPVLASMTKATDPRFRPRWRVILTSFVGAALLWLLYSHHQGPVPGR
 PPTHNAHNWRLSQQRISHYNDTYPLSPQRTPGGIRYRIAVIADLTGSRAQEENTWFSYLKKGYLTLSD
 SGDRVSVWEDKDHGVLESHLAEKGRGMELSDLIVFNGKLYSVDDRTGVIYQIEGTAKVPWVILSDGDGTV
 EKGFKAEWLAVKDEHLYVGGLGKEWTTTTGEVMNENPEWVKVVGHRGSDHENWVSSYNALRAAAGIRPP
 GYLIHESACWSDLQRWFLLPRRASHERYSEKDDERKGSNLLLAAQDFRDISVRQVGTLLIPTHGFSSFK
 FIPNTDDQIIVALKSEEDNGRIATYVMAFTLDGRFLLPETKIGTVKYEGIEFI

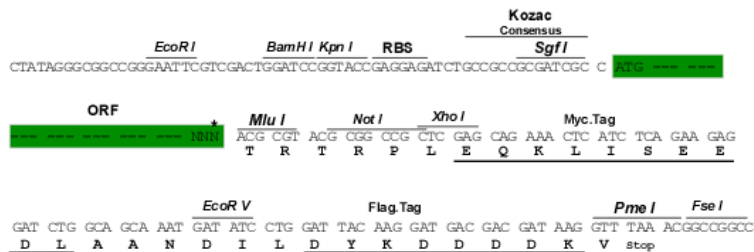
TRTRPLEQKLISEEDLAANDILDYKDDDDKV

Restriction Sites:

SgfI-MluI

Cloning Scheme:

Cloning sites used for ORF Shuttling:



* The last codon before the Stop codon of the ORF

ACCN: NM_001025617

ORF Size: 1212 bp

OTI Disclaimer: The molecular sequence of this clone aligns with the gene accession number as a point of reference only. However, individual transcript sequences of the same gene can differ through naturally occurring variations (e.g. polymorphisms), each with its own valid existence. This clone is substantially in agreement with the reference, but a complete review of all prevailing variants is recommended prior to use. [More info](#)

OTI Annotation: This clone was engineered to express the complete ORF with an expression tag. Expression varies depending on the nature of the gene.

Components: The ORF clone is ion-exchange column purified and shipped in a 2D barcoded Matrix tube containing 10ug of transfection-ready, dried plasmid DNA (reconstitute with 100 ul of water).

Reconstitution Method:

1. Centrifuge at 5,000xg for 5min.
2. Carefully open the tube and add 100ul of sterile water to dissolve the DNA.
3. Close the tube and incubate for 10 minutes at room temperature.
4. Briefly vortex the tube and then do a quick spin (less than 5000xg) to concentrate the liquid at the bottom.
5. Store the suspended plasmid at -20°C. The DNA is stable for at least one year from date of shipping when stored at -20°C.

RefSeq: [NM_001025617.1](#), [NM_001025617.2](#), [NP_001020788.1](#)

RefSeq Size: 2957 bp

RefSeq ORF: 1212 bp

Locus ID: 76025

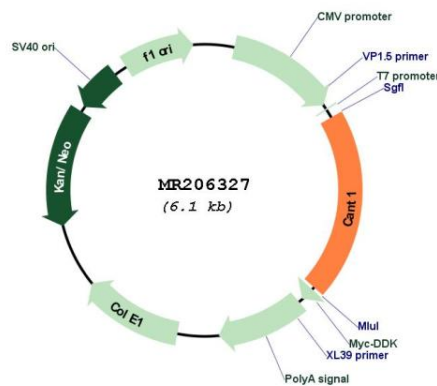
UniProt ID: [Q8VCF1](#)

Cytogenetics: 11 83.15 cM

MW: 45.7 kDa

Gene Summary: The protein encoded by this gene is a calcium-dependent nucleotidase that preferentially hydrolyzes UDP, GDP, and IDP. The encoded protein has low activity with ADP and ATP and shows no activity with AMP and GMP. Several transcript variants encoding two different isoforms have been found for this gene. [provided by RefSeq, Jun 2012]

Product images:



Circular map for MR206327