

## Product datasheet for **MR206310**

### Ren1 (NM\_031192) Mouse Tagged ORF Clone

#### Product data:

Product Type:	Expression Plasmids
Product Name:	Ren1 (NM_031192) Mouse Tagged ORF Clone
Tag:	Myc-DDK
Symbol:	Ren1
Synonyms:	D19352; Ren; Ren-1; Ren-A; Ren1c; Ren1d; Rn-1; Rnr
Mammalian Cell Selection:	Neomycin
Vector:	pCMV6-Entry (PS100001)
E. coli Selection:	Kanamycin (25 ug/mL)
ORF Nucleotide Sequence:	>MR206310 ORF sequence Red=Cloning site Blue=ORF Green=Tags(s)

TTTTGTAATACGACTCACTATAGGGCGGCCGGAATTCGTCGACTGGATCCGGTACCGAGGAGATCTGCC  
GCC**CGATCGCC**

ATGGACAGAAGGAGGATGCCTCTCTGGGCACTCTTGTGCTCTGGAGTCCTTGCACCTTCAGTCTCCAA  
CACGCACCGCTACCTTTGAACGAATCCCCTCAAGAAAATGCCTTCTGTCCGGAAATCCTGGAGGAGCG  
GGGAGTGGACATGACCAGGCTCAGTGTGAATGGGGCGTATTACAAAGAGGCCCTCCTTGACCAATCTT  
ACCTCCCCGTGGTCTCACCACTACCTGAATACCCAGTACTACGGCGAGATTGGCATCGGTACCCAC  
CCCAGACCTTCAAAGTCATCTTTGACACGGGTTACGCCAACCTCTGGGTGCCCTCCACCAAGTGCAGCCG  
CCTCTACCTTGCTTGTTGGGATTACAGCCTCTATGAGTCCTCTGACTCCTCCAGCTACATGGAGAACGGG  
TCCGACTTCACCATCCACTACGGATCAGGGAGAGTCAAAGGTTTCTCAGCCAGGACTCGGTGACTGTGG  
GTGGAATCACTGTGACACAGACCTTTGGAGAGGTACCGAGCTGCCCTGATCCCTTTATGCTGGCCAA  
GTTTGACGGTGTCTAGGCATGGGCTTTCCCGCTCAGGCCGTTGGCGGGTTACCCCTGTCTTGACCAC  
ATTCTCTCCAGGGGTGCTAAAGGAGGAAGTGTCTCTGTCTACTACAACAGGGGTTCCACCTGCTGG  
GGGCGAGGTGGTGTAGGAGGTAGCGACCCGACGATTATCAAGGCAATTTTCACTATGTGAGCATCAG  
CAAGACTGACTCCTGGCAGATCACGATGAAGGGGTGTCTGTGGGTCTTCCACCCTGCTATGTGAAGAA  
GGCTGTGCGGTAGTGGTGGACACTGGTTCATCTTTATCTCGGCTCCTACGAGCTCCCTGAAGTTGATCA  
TGCAAGCCCTGGGAGCCAAGGAGAAGAGAATAGAAGAATATGTTGTGAAGTGTAGCCAGGTGCCACCCT  
CCCCGACATTTCTTTGACCTGGGAGGCAGGGCCTACACACTCAGCAGTACGGACTACGTGCTACAGTAT  
CCCAACAGGAGAGACAAGCTGTGCACACTGGCTCTCCATGCCATGGACATCCCACCACCCACTGGCCCTG  
TCTGGGTCTGGGTGCCACCTTCATCCGCAAGTTCTATACAGAGTTTGATCGGCATAACAATCGCATTGG  
ATTCGCCCTTGCCCGC

**ACGGCT**ACGGCGCCGCTCGAGCAGAAACTCATCTCAGAAGAGGATCTGGCAGCAATGATATCCTGGATT  
ACAAGGATGACGACGATAAGGTTTAA



[View online >](#)

**Protein Sequence:** >MR206310 protein sequence  
Red=Cloning site Green=Tags(s)

MDRRRMPWLWLLLLWSPCTFSLPTRTATFERIPLKKMPSVREILEERGVDMTRLSAEWGVFTKRPSLTNL  
 TSPVVL TNYLNTQYYGEIGIGTPPQTFKVI FDTGSANLWVPSTKCSRLYLACGIHSLYESDSSSYMENG  
 SDFTIHYGSGRVKGFLSQDSVTVGGITVTQTFGEVTEPLIPFMLAKFDGVLGMGFPAQAVGGVTPVFDH  
 ILSQGVLKEEVFSVYYNRGSHLLGGEVVLGGSDPQHYQGNFHYVSIKTDSWQITMKGVSVGSSTLLCEE  
 GCAVVVDTGSSFISAPTSCLKLIMQALGAKEKRIEEEYVNCSSQVPTLPDISFDLGGRAYTLSSSTDYVLQY  
 PNRRDKLCTLALHAMDIPPTGPVWVLGATFIRKFYTEFDRHNNRIGFALAR

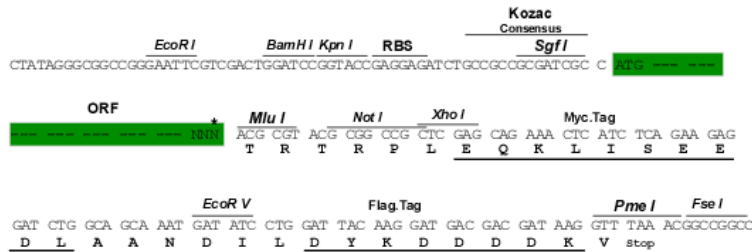
TRTRPLEQKLISEEDLAANDILDYKDDDDKV

**Restriction Sites:**

Sgfl-MluI

**Cloning Scheme:**

Cloning sites used for ORF Shuttling:



\* The last codon before the Stop codon of the ORF

**ACCN:** NM\_031192

**ORF Size:** 1209 bp

**OTI Disclaimer:** The molecular sequence of this clone aligns with the gene accession number as a point of reference only. However, individual transcript sequences of the same gene can differ through naturally occurring variations (e.g. polymorphisms), each with its own valid existence. This clone is substantially in agreement with the reference, but a complete review of all prevailing variants is recommended prior to use. [More info](#)

**OTI Annotation:** This clone was engineered to express the complete ORF with an expression tag. Expression varies depending on the nature of the gene.

**Components:** The ORF clone is ion-exchange column purified and shipped in a 2D barcoded Matrix tube containing 10ug of transfection-ready, dried plasmid DNA (reconstitute with 100 ul of water).

**Reconstitution Method:**

1. Centrifuge at 5,000xg for 5min.
2. Carefully open the tube and add 100ul of sterile water to dissolve the DNA.
3. Close the tube and incubate for 10 minutes at room temperature.
4. Briefly vortex the tube and then do a quick spin (less than 5000xg) to concentrate the liquid at the bottom.
5. Store the suspended plasmid at -20°C. The DNA is stable for at least one year from date of shipping when stored at -20°C.

**RefSeq:** [NM\\_031192.3](#), [NP\\_112469.1](#)

**RefSeq Size:** 1423 bp

**RefSeq ORF:** 1209 bp

**Locus ID:** 19701

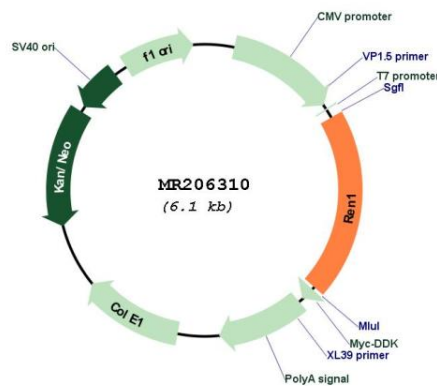
**UniProt ID:** [P06281](#)

**Cytogenetics:** 1 57.91 cM

**MW:** 44.3 kDa

**Gene Summary:** Renin is a highly specific endopeptidase, whose only known function is to generate angiotensin I from angiotensinogen in the plasma, initiating a cascade of reactions that produce an elevation of blood pressure and increased sodium retention by the kidney. [UniProtKB/Swiss-Prot Function]

### Product images:



Circular map for MR206310