

Product datasheet for MR206270

B4galt1 (NM_022305) Mouse Tagged ORF Clone

Product data:

Product Type:	Expression Plasmids
Product Name:	B4galt1 (NM_022305) Mouse Tagged ORF Clone
Tag:	Myc-DDK
Symbol:	B4galt1
Synonyms:	4-GalT; 4-GalT1; B-1; b4Gal-T1; beta-1; beta4Gal-T1; Ga; GalT; Ggtb; Ggtb2
Mammalian Cell Selection:	Neomycin
Vector:	pCMV6-Entry (PS100001)
E. coli Selection:	Kanamycin (25 ug/mL)
ORF Nucleotide Sequence:	>MR206270 ORF sequence Red=Cloning site Blue=ORF Green=Tags(s)

TTTTGTAATACGACTCACTATAGGGCGGCCGGAATTCGTCGACTGGATCCGGTACCGAGGAGATCTGCC
GCC**CGATCGCC**

ATGAGGTTTCGTGAGCAGTTCTGGGCGGCAGCGCCGCGATGCCGGGCGCGACCCTGCAGCGGGCTGCC
GCCTGCTCGTGGCCGTCTGCGCGCTGCACCTCGGCGTCACCCCTCGTCTATTACCTCTCTGGCCGCGATCT
GAGCCGCTGCCAGTTGGTCGGAGTCTCTACACTGCAGGGCGGCACGAACGGCGCCGAGCCAGC
AAGCAGCCCCAGGAGAGCAGCGCCGCGGGTGCAGCGCCGCGCTCTTTAGCGTCTCCCCAAGC
CTCGCCGGGTCTCGACTCCAGCCCTGGTGCAGCTTCTGGCCCGGCTTGAAGAGCAACTTGTCTCGTT
GCCAGTGCCACCACACTGGACTGTTGTGCTGCGAGCTTGCCCTGAGGAGTCCCGCTGCTCGTTGGC
CCCATGCTGATTGACTTTAATATTGCTGTGGATCTGGAGCTTTTGGCAAAGAAGAACCCAGAGATAAAGA
CGGGCGGCCGTTACTCCCCAAGGACTGTGCTCTCTCAAAAGGTGGCCATCATCATCCATTCCGTAA
CCGGCAGGAGCATCTCAAATACTGGCTGTATTATTTGCATCCCATCCTTCAGCGCCAGCAACTCGACTAT
GGCATCTACGTCAATCAGGCTGGAGACACCATGTTCAATCGAGCTAAGCTGCTCAATATTGGCTTTC
AAGAGGCCTTGAAGGACTATGATTACAAGTCTTGTGTTGAGTGTGGACCTCATTCCGATGGACGA
CCGTAATGCCTACAGGTGTTTTTCGAGCCACGGCACATTTCTGTTGCAATGGACAAGTTCCGGTTTAGC
CTGCCATATGTTTCAGTATTTGGAGGTGCTCTGCTCTCAGTAAACAACAGTTTCTGCCATCAATGGAT
TCCCTAATAATTATTGGGTTGGGAGGAGAAGATGACGACATTTTAAACAGATTAGTTCATAAAGGCAT
GTCTATATCACGTCCAAATGCTGTAGTAGGAGGTGTCGAATGATCCGGCATTCAAGAGACAAGAAAAAT
GAGCCCAATCCTCAGAGTTTGACCGGATCGCACATAAAAGGAAACGATGCGCTTCGATGGTTTGAAC
CACTTACCTACAAGGTGTTGGATGTACAGAGATACCCGTTATATACCCAAATCACAGTGGACATCGGGAC
ACCGAGA

ACGCGTACGCGGCCGCTCGAGCAGAACTCATCTCAGAAGAGGATCTGGCAGCAAATGATATCCTGGATT
ACAAGGATGACGACGATAAGGTTTAA



[View online >](#)

Protein Sequence: >MR206270 protein sequence
 Red=Cloning site Green=Tags(s)

MRFREQFLGGSAAMPGATLQRACRLLVAVCALHLGVTLVYYLSGRDL SRLPQLVGVSSTLQGGTNGAAAS
 KQPPGEQRPRGARPPPPLGVSPKPRPGLDSSPGAASGPGPKSNLSSLPVPTTTGLLSLPACPEESPLLVG
 PMLIDFNIAVDLELLAKKNPEIKTGGRYSPKDCVSPHKVAIIIPFRNRQEHLKYWLYLHPILQRQQLDY
 GIYVINQAGDTMFNRAKLLNIGFQEALKDYDYNCFVSDVDLIPMDDRNAYRCFSQPRHISVAMDKFGFS
 LPYVQYFGGVSALSQQFLAINGFPNNYWGWGGEDDDDIFNRLVHKGMSISRPNAVVGRCRMIRHSRDKKN
 EPNPQRFDRIAHTKETMRFDGLNSLTYKVLVDVQRYPLYTQITVDIGTPR

TRTRPLEQKLISEEDLAANDILDYKDDDDKV

Restriction Sites:

SgfI-MluI

Cloning Scheme:

Cloning sites used for ORF Shuttling:



* The last codon before the Stop codon of the ORF

ACCN: NM_022305

ORF Size: 1200 bp

OTI Disclaimer: Due to the inherent nature of this plasmid, standard methods to replicate additional amounts of DNA in E. coli are highly likely to result in mutations and/or rearrangements. Therefore, OriGene does not guarantee the capability to replicate this plasmid DNA. Additional amounts of DNA can be purchased from OriGene with batch-specific, full-sequence verification at a reduced cost. Please contact our customer care team at custsupport@origene.com or by calling 301.340.3188 option 3 for pricing and delivery.

The molecular sequence of this clone aligns with the gene accession number as a point of reference only. However, individual transcript sequences of the same gene can differ through naturally occurring variations (e.g. polymorphisms), each with its own valid existence. This clone is substantially in agreement with the reference, but a complete review of all prevailing variants is recommended prior to use. [More info](#)

OTI Annotation: This clone was engineered to express the complete ORF with an expression tag. Expression varies depending on the nature of the gene.

Components: The ORF clone is ion-exchange column purified and shipped in a 2D barcoded Matrix tube containing 10ug of transfection-ready, dried plasmid DNA (reconstitute with 100 ul of water).

Reconstitution Method:

1. Centrifuge at 5,000xg for 5min.
2. Carefully open the tube and add 100ul of sterile water to dissolve the DNA.
3. Close the tube and incubate for 10 minutes at room temperature.
4. Briefly vortex the tube and then do a quick spin (less than 5000xg) to concentrate the liquid at the bottom.
5. Store the suspended plasmid at -20°C. The DNA is stable for at least one year from date of shipping when stored at -20°C.

RefSeq: [NM_022305.5](#)

RefSeq Size: 4535 bp

RefSeq ORF: 1200 bp

Locus ID: 14595

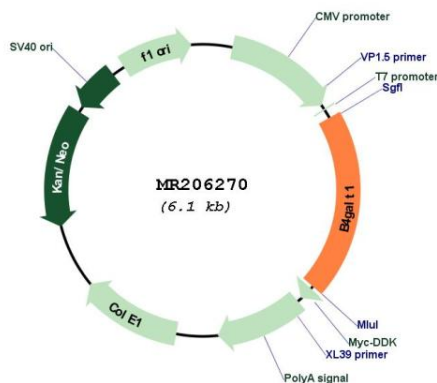
UniProt ID: [P15535](#)

Cytogenetics: 4 20.46 cM

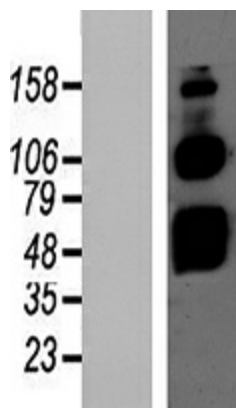
MW: 44.4 kDa

Gene Summary: This gene encodes two distinct enzyme isoforms, a long membrane-bound form and a short soluble form. These alternate isoforms are thought to be produced through alternative nested transcription initiation and different in-frame start codon usage. These enzymes catalyze the transfer of galactose to acceptor sugars, such as N-acetylglucosamine and glucose. The long form of this enzyme is localized to the trans-Golgi membrane and is involved in glycoconjugate biosynthesis. The short form functions in lactose biosynthesis though formation of a heterodimer with alpha-lactalbumin. [provided by RefSeq, Nov 2012]

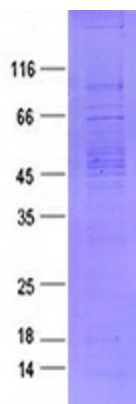
Product images:



Circular map for MR206270



Western validation with an anti-DDK antibody; L: Control HEK293 lysate R: Over-expression lysate



Coomassie blue staining of purified B4galt1 protein (Cat# [TP506270]). The protein was produced from HEK293T cells transfected with B4galt1 cDNA clone (Cat# MR206270) using MegaTran 2.0 (Cat# [TT210002]).