

## Product datasheet for **MR206206**

### Gpr84 (NM\_030720) Mouse Tagged ORF Clone

#### Product data:

**Product Type:** Expression Plasmids  
**Product Name:** Gpr84 (NM\_030720) Mouse Tagged ORF Clone  
**Tag:** Myc-DDK  
**Symbol:** Gpr84  
**Synonyms:** EX33  
**Mammalian Cell Selection:** Neomycin  
**Vector:** pCMV6-Entry (PS100001)  
**E. coli Selection:** Kanamycin (25 ug/mL)  
**ORF Nucleotide Sequence:** >MR206206 ORF sequence  
Red=Cloning site Blue=ORF Green=Tags(s)

TTTTGTAATACGACTCACTATAGGGCGCCGGGAATTCGTCGACTGGATCCGGTACCGAGGAGATCTGCC  
GCC**CGATCGCC**

ATGTGGAACAGCTCAGATGCCAACTTCTCCTGCTACCATGAGTCTGTGTTGGGCTATCGATACTTTGCAG  
TTATCTGGGGCGTGGCAGTGGCTGTGACAGGCACGGTGGGCAATGTGCTCACTCTGCTGGCCTTGGCCAT  
TCGTCCAAGCTCCGAACCCGTTCAACCTGCTCATTGCCAACCTCACCTGGCTGATCTACTCTACTGC  
ACGCTCCTGCAGCCTTCTCCGTGGACACATACCTCCACCTCCATTGGCGTACCGGCGCGGTCTTCTGTA  
GAATATTTGGACTCCTCCTCTTACTTCCAATTCTGTCTCCATCCTCACCTCTGTCTCATTGCTCTAGG  
ACGCTACCTCCTCATTGCCACCTAAGCTCTTCCCCAGGTTTTTCAGTGCCAAGGGGATCGTGTGGCA  
CTGGTGGGCAGCTGGGTTGTGGGGTGACCAGCTTTGCCCCCTCGGAATGTTTTGTCTTGGTGCCAG  
TTGTCTGCACCTGCAGCTTTGACCGCATGCGAGGCCGGCCTTACACCACCATCCTCATGGGCATCTACTT  
TGTGCTTGGGCTCAGCAGCGTGGGCGTCTTCTACTGCCTCATCCACGGCAAGTGAAGCGTGGCGCTCGA  
GCACTGGACCAATACGGGCTGCATCAGGCCAGCATCCGCTCTCATCAGGTGGCTGGGACACAAGAAGCCA  
TGCTGGCCACTTCCAGGAGCTAGACAGCGGGTTCCTCAAGAGGGCCAGCGAGGGGATTTCTATCTGA  
GCCAGTCACTGCTGCGACCACGCAGACCCTGGAAGGTGATTCTGTCGAAGCTGGGGCCAGGGCATTAGA  
AAGGCAGCTAACAGATCGCAGAGAGAAGCCTCCAGAAGTGCATCGCAAGCCCGGAAACTGCAGGAG  
CTCGCAGAGCCACAGATGCCCATCAGAGTTCGGGAAGGTGACCGTATGTGCTTCGCAGTGTCTCTCTG  
CTTCGCCCTCAGCTACATCCCCTTCTGTTGCTCAACATTCTGGACGCCAGGGCCGTGCTCCACGAGTA  
GTGCACATGGTGGCTGCCAACCTCACCTGGCTCAACAGCTGCATCAACCTGTGCTCTATGCAGCCATGA  
ACCGCCAGTTTCGCCACGCGTATGGCTCCATCCTGAAACGCGGGCCACAGAGTTTCGCCGGTCCAT

AG**CGGACCG**ACGCGTACGCGGCCGCTCGAGCAGAACTCATCTCAGAAGAGGATCTGGCAGCAAATGATATCC  
TGGATTACAAGGATGACGACGATAAGGTTTAA



[View online »](#)

**Protein Sequence:** >MR206206 protein sequence  
Red=Cloning site Green=Tags(s)

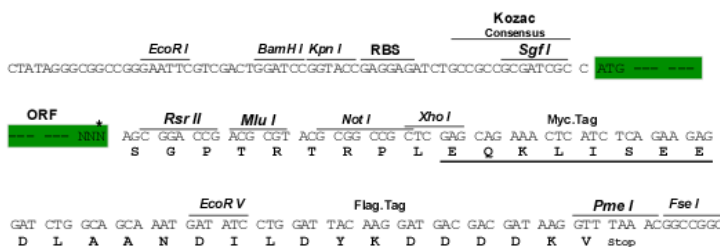
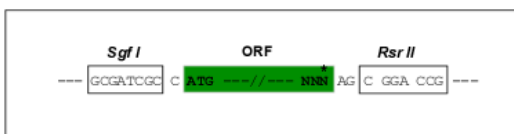
MWNSSDANFSCYHESVLGYRYFAVIWGVAVAVTGTVGNVLTLLALAIRPKLRTRFNLLIANLTLADLLYC  
 TLLQPFVSDTYLHLHWRTGAVFCRIFGLLLFTSNVSILTLCLIALGRYLLIAHPKLPQVFSAKGIVLA  
 LVGSWVVGVTSFAPLWNVFLVPVVCTCSFDRMRGRPYTILMGIYFVLGLSSVGVFYCLIHROVKRAAR  
 ALDQYGLHQASIRSHQVAGTQEAMPGHFQELDSGVASRGPSEGISSEPVSAATTQTLEGDSSEAGGQIR  
 KAAQQIAERSLPEVHRKPRETAGARRATDAPSEFGKVTRMCFVFLCFALSYIPFLLLNILDARGRAPRV  
 VHMVAANLTLWNSCINPVLYAAMNRQFRHAYGSILKRGPSFRFRFH

SGPTRTRPLEQKLISEEDLAANDILDYKDDDDKV

**Restriction Sites:** SgfI-RsrII

**Cloning Scheme:**

Cloning sites used for ORF Shutting:



\* The last codon before the Stop codon of the ORF

**ACCN:** NM\_030720

**ORF Size:** 1191 bp

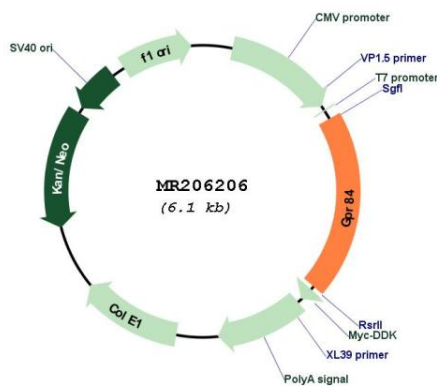
**OTI Disclaimer:** Due to the inherent nature of this plasmid, standard methods to replicate additional amounts of DNA in E. coli are highly likely to result in mutations and/or rearrangements. Therefore, OriGene does not guarantee the capability to replicate this plasmid DNA. Additional amounts of DNA can be purchased from OriGene with batch-specific, full-sequence verification at a reduced cost. Please contact our customer care team at [custsupport@origene.com](mailto:custsupport@origene.com) or by calling 301.340.3188 option 3 for pricing and delivery.

The molecular sequence of this clone aligns with the gene accession number as a point of reference only. However, individual transcript sequences of the same gene can differ through naturally occurring variations (e.g. polymorphisms), each with its own valid existence. This clone is substantially in agreement with the reference, but a complete review of all prevailing variants is recommended prior to use. [More info](#)

**OTI Annotation:** This clone was engineered to express the complete ORF with an expression tag. Expression varies depending on the nature of the gene.

<b>Components:</b>	The ORF clone is ion-exchange column purified and shipped in a 2D barcoded Matrix tube containing 10ug of transfection-ready, dried plasmid DNA (reconstitute with 100 ul of water).
<b>Reconstitution Method:</b>	<ol style="list-style-type: none"> <li>1. Centrifuge at 5,000xg for 5min.</li> <li>2. Carefully open the tube and add 100ul of sterile water to dissolve the DNA.</li> <li>3. Close the tube and incubate for 10 minutes at room temperature.</li> <li>4. Briefly vortex the tube and then do a quick spin (less than 5000xg) to concentrate the liquid at the bottom.</li> <li>5. Store the suspended plasmid at -20°C. The DNA is stable for at least one year from date of shipping when stored at -20°C.</li> </ol>
<b>RefSeq:</b>	<u>NM_030720.1, NP_109645.1</u>
<b>RefSeq Size:</b>	1611 bp
<b>RefSeq ORF:</b>	1191 bp
<b>Locus ID:</b>	80910
<b>UniProt ID:</b>	<u>Q8CIM5</u>
<b>Cytogenetics:</b>	15 F3
<b>MW:</b>	43.7 kDa
<b>Gene Summary:</b>	Receptor for medium-chain free fatty acid (FFA) with carbon chain lengths of C9 to C14. Capric acid (C10:0), undecanoic acid (C11:0) and lauric acid (C12:0) are the most potent agonists. Not activated by short-chain and long-chain saturated and unsaturated FFAs. Activation by medium-chain free fatty acid is coupled to a pertussis toxin sensitive G(i/o) protein pathway. May have important roles in processes from fatty acid metabolism to regulation of the immune system (By similarity).[UniProtKB/Swiss-Prot Function]

### Product images:



Circular map for MR206206