

## Product datasheet for MR206172

### Nme7 (NM\_138314) Mouse Tagged ORF Clone

#### Product data:

|                           |                                                                   |
|---------------------------|-------------------------------------------------------------------|
| Product Type:             | Expression Plasmids                                               |
| Product Name:             | Nme7 (NM_138314) Mouse Tagged ORF Clone                           |
| Tag:                      | Myc-DDK                                                           |
| Symbol:                   | Nme7                                                              |
| Synonyms:                 | D530024H21Rik; Nm23-M7; Nm23-r7                                   |
| Mammalian Cell Selection: | Neomycin                                                          |
| Vector:                   | pCMV6-Entry (PS100001)                                            |
| E. coli Selection:        | Kanamycin (25 ug/mL)                                              |
| ORF Nucleotide Sequence:  | >MR206172 ORF sequence<br>Red=Cloning site Blue=ORF Green=Tags(s) |

TTTTGTAATACGACTCACTATAGGGCGGCCGGAATTCGTCGACTGGATCCGGTACCGAGGAGATCTGCC  
GCC**CGATCGCC**

ATGAGAGCCTGTCAGCAGGGAAGAAGTTCAGTTGGTTTCTCCATATATGGCACCCAAGAATCAGAGCG  
AGAGATTCGTTTCATTGCAGAGTGGTATGATCCAAATGCTTCATTGCTCCGACGCTATGAGCTGCTGTT  
TTACCCACAGACGGATCTGTTGAAATGCATGATGTAAGAATCGTCGCACCTTCTTAAAGCGGACCAAG  
TATGAGGACCTGCGCCTGGAAGATCTATTTATAGGCAACAAAGTCAATGTGTTTTCTCGACAGCTGGTGT  
TGATTGACTATGGGACCAATACACAGCCCGCCAGCTGGCAGCAGGAAAGAGAAAACCTTAGCCCTGAT  
CAAACCAGATGCAGTGTCAAAGCCGGAGAAATCATTGAGATGATAAACAAAAGTGGATTTACTATAACC  
AAACTCCGAATGATGACTCTGACAAGGAAAGAAGCAGCGGACTTTCATGTAGACCATCACTCAAGGCCTT  
TTTATAACGAATGATCCAGTTTATCACAAGTGGGCTGTTATTGCCATGGAGATCTTAAGAGATGACGC  
GATCTGTGAGTGGAAAAGGTTGCTTGGACCCGCAAACCTCTGGGCTATCACGGACAGATGCCCCGGGAAGC  
ATCCGAGCCCTCTTTGGACAGATGGCGTGAGAAATGCAGCTCACAGCCCTGATACTTTTGCATCTGCTG  
CCAGAGAAATGGAATTGTTTTTCCTTCAAGTGGAGGCTGTGGCCAGCGAACACTGCTAAATTTACCAA  
TTGCACCTGTTGCATCATTAAAGCCTCATGCTATCAGTGAAGGAATGTTGGGAAAGATTTTAAAGCTATT  
CGGGATGCATGCTTTGGAATGTCAGCGATACAGATGTTCAATTTGGATCGGGTTAATGTTGAAGAATTCT  
ATGAAGTCTATAAAGGTGATGTCTGAGTATAATGATATGGTGACAGAGCTGTGCTCCGGCCCTTGCGT  
AGCAATAGAGATCCAACAGAGCAACCCTACAAAGACATTTGAGAAATTTGCGGACCTGCTGATCTGAA  
ATCGCCCCGATTTACGACCTGAGACCCTCAGGGCAATTTTGGTAAAACCTAAGGTTCAAATGCTGTTCC  
ATTGCACGGATCTGCCGGAGGATGGGCTCCTGGAGGTCCAGTATTTCTTCAAGATCTTGGATAAT

**ACGCGT**ACGCGGCCGCTCGAGCAGAAACTCATCTCAGAAGAGGATCTGGCAGCAAATGATATCCTGGATT  
ACAAGGATGACGACGATAAGGTTTAA



[View online »](#)

**Protein Sequence:** >MR206172 protein sequence  
 Red=Cloning site Green=Tags(s)

MRACQQGRSSSLVSPYMAPKNQSERFAFIAEWYDPNASLLRRYELLFYPTDGSVEMHDVKNRRTFLKRTK  
 YEDLRLEDLFIGNKVNVFSRQLVLIDYGDQYARQLGSRKEKTLALIKPDAVSKAGEIIEINKSGFTIT  
 KLRMRTLTRKEAADFHVDDHHRPFYNELIQFITSGPVIAMEILRDDAICEWKRLGPPANSGLSRDAPGS  
 IRALFGTDGVRNAAHSPDTFASAAREMELFFPSSGGCGPANTAKFTNCTCCIIPHAISEGMLGKILIAI  
 RDACFGMSAIQMFNLDRVNVVEEFYEVYKGVVSEYNDMVTCLCSGPCVAIEIQQSNPTKTFREFCGPADPE  
 IARHLRPETLRAIFGKTKVQNAVHCTDLPEDGLLEVQYFFKILDN

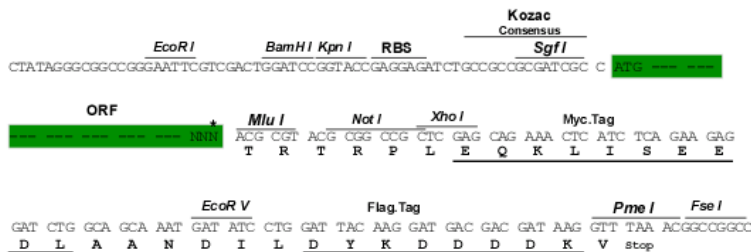
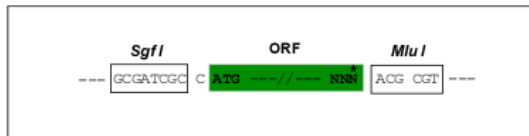
TRTRPLEQKLISEEDLAANDILDYKDDDDKV

**Restriction Sites:**

SgfI-MluI

**Cloning Scheme:**

Cloning sites used for ORF Shuttling:



\* The last codon before the Stop codon of the ORF

**ACCN:** NM\_138314

**ORF Size:** 1188 bp

**OTI Disclaimer:** The molecular sequence of this clone aligns with the gene accession number as a point of reference only. However, individual transcript sequences of the same gene can differ through naturally occurring variations (e.g. polymorphisms), each with its own valid existence. This clone is substantially in agreement with the reference, but a complete review of all prevailing variants is recommended prior to use. [More info](#)

**OTI Annotation:** This clone was engineered to express the complete ORF with an expression tag. Expression varies depending on the nature of the gene.

**Components:** The ORF clone is ion-exchange column purified and shipped in a 2D barcoded Matrix tube containing 10ug of transfection-ready, dried plasmid DNA (reconstitute with 100 ul of water).

**Reconstitution Method:**

1. Centrifuge at 5,000xg for 5min.
2. Carefully open the tube and add 100ul of sterile water to dissolve the DNA.
3. Close the tube and incubate for 10 minutes at room temperature.
4. Briefly vortex the tube and then do a quick spin (less than 5000xg) to concentrate the liquid at the bottom.
5. Store the suspended plasmid at -20°C. The DNA is stable for at least one year from date of shipping when stored at -20°C.

**RefSeq:** [NM\\_138314.1](#), [NM\\_138314.2](#), [NM\\_138314.3](#), [NM\\_138314.4](#), [NP\\_612187.2](#)

**RefSeq Size:** 1740 bp

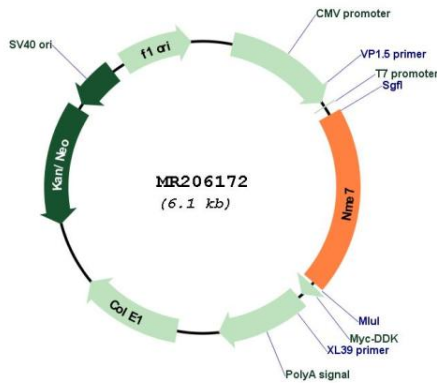
**RefSeq ORF:** 1188 bp

**Locus ID:** 171567

**Cytogenetics:** 1 H2.2

**MW:** 44.5 kDa

**Product images:**



Circular map for MR206172