

## Product datasheet for MR206155L3

### Serpina10 (BC018416) Mouse Tagged Lenti ORF Clone

#### Product data:

Product Type:	Expression Plasmids
Product Name:	Serpina10 (BC018416) Mouse Tagged Lenti ORF Clone
Tag:	Myc-DDK
Symbol:	Serpina10
Synonyms:	MGC25863, ZPI, PZI
Mammalian Cell Selection:	Puromycin
Vector:	pLenti-C-Myc-DDK-P2A-Puro (PS100092)
E. coli Selection:	Chloramphenicol (34 ug/mL)
ORF Nucleotide Sequence:	The ORF insert of this clone is exactly the same as(MR206155).
Restriction Sites:	SgfI-MluI
Cloning Scheme:	

Cloning sites used for ORF Shuttling:



\* The last codon before the Stop codon of the ORF.

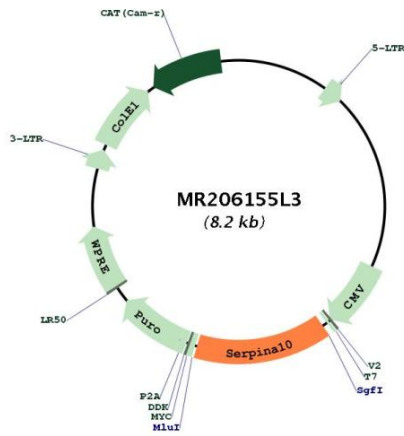
ACCN:	BC018416
ORF Size:	1182 bp



[View online »](#)

<b>OTI Disclaimer:</b>	The molecular sequence of this clone aligns with the gene accession number as a point of reference only. However, individual transcript sequences of the same gene can differ through naturally occurring variations (e.g. polymorphisms), each with its own valid existence. This clone is substantially in agreement with the reference, but a complete review of all prevailing variants is recommended prior to use. <a href="#">More info</a>
<b>OTI Annotation:</b>	This clone was engineered to express the complete ORF with an expression tag. Expression varies depending on the nature of the gene.
<b>Components:</b>	The ORF clone is ion-exchange column purified and shipped in a 2D barcoded Matrix tube containing 10ug of transfection-ready, dried plasmid DNA (reconstitute with 100 ul of water).
<b>Reconstitution Method:</b>	<ol style="list-style-type: none"><li>1. Centrifuge at 5,000xg for 5min.</li><li>2. Carefully open the tube and add 100ul of sterile water to dissolve the DNA.</li><li>3. Close the tube and incubate for 10 minutes at room temperature.</li><li>4. Briefly vortex the tube and then do a quick spin (less than 5000xg) to concentrate the liquid at the bottom.</li><li>5. Store the suspended plasmid at -20°C. The DNA is stable for at least one year from date of shipping when stored at -20°C.</li></ol>
<b>RefSeq:</b>	<a href="#">BC018416</a> , <a href="#">AAH18416</a>
<b>RefSeq Size:</b>	1450 bp
<b>RefSeq ORF:</b>	1184 bp
<b>Locus ID:</b>	217847
<b>Cytogenetics:</b>	12 E
<b>Gene Summary:</b>	The protein encoded by this gene is a member of the large serpin family of proteins, and is also known as serpin PZ-dependent protease inhibitor (ZPI or PZI). This protein is thought to play an important role in the regulation of coagulation. It directly inhibits factor XIa, and also inhibits factor Xa in the presence of calcium, phospholipids, and protein Z (PZ). Deficiencies in this gene lead to an increase in thrombosis. Alternative splicing results in multiple transcript variants that encode multiple protein isoforms. [provided by RefSeq, Aug 2014]

Product images:



Circular map for MR206155L3