

Product datasheet for MR206045

C87436 (BC026926) Mouse Tagged ORF Clone

Product data:

| | |
|---------------------------|---|
| Product Type: | Expression Plasmids |
| Product Name: | C87436 (BC026926) Mouse Tagged ORF Clone |
| Tag: | Myc-DDK |
| Symbol: | C87436 |
| Synonyms: | MGC25529 |
| Mammalian Cell Selection: | Neomycin |
| Vector: | pCMV6-Entry (PS100001) |
| E. coli Selection: | Kanamycin (25 ug/mL) |
| ORF Nucleotide Sequence: | >MR206045 ORF sequence Red=Cloning site Blue=ORF Green=Tags(s) |

TTTTGTAAACGACTCACTATAGGGCGCCGGGAATTCGTCGACTGGATCCGGTACCGAGGAGATCTGCC
GCC**CGATCGCC**

ATGGAACCAAACCTCTCAGAGGACTAAAGTCCCAGCTTTCTTATCTGACTTGGGAAGGCCCACTGAGGG
GAATCAGGAAGTGTCCCGATGTGGTACGTTCAATGGAACCCGTGGGTTGAGCTGTAAGAACAAGACATG
TGGAACCATATTTGCTATGGTGCCGAAAGCAGCCTAGCATTGAAGCTGTCAAATCATCACCGCTCT
GATCTACAGGTCTACTCTGTGCGACAGAGACCGAGGCCCGACTACCGATGCTTCGTGGAGCTCGGTG
TTTCGGAGACTGCAATCCAGACCGTGGATGGTACAATCATCACTCAGCTGAGCTCCGGCCGATGTTACGT
CCCCTCGTGTTTGAAAGCTGCCACTCAAGGCATTGTGGAAAACCAAGTGTCAACACATCAAGCTAGCGGTG
ACCTGCCAGGCGGAGGCCACCCCTCTGACCCTGAAGAGCTCAGTCCGAATGCTCTGCAGGCTGCCCCAG
AAACCAAGCAGAGCCTCTGGCAGCTGGCCACCGAGCCCACGGGGCCCCTGGTACAGAGAGTCACTAAAAA
CATTATGGTGGTGAATGCAAAGCCAGCCAGAAGCACAACCTTGGGCTACTTGCACGCGTCTTATGCAG
AAGATCAGTCCAGAAGCTTGGCCGAGCGCCGCTTCTTCTGCTCTGCCAGACTTGAGGCCACACAAGT
CCAGCGTCCCCAAGGCTGAGGCAGCCCCAAAGTGCATCCATTTCTTGTCTCTGTGCCTTTGCCAG
CGATGAGACATTGGCTCAGGAGTTCTCGACTTTCTGAACTTCGATGCCAGTGGTCTTAAGGAGATAATT
GTGCCCATTTAGGCTGCCATGCAGAGTCATGTCTCAGCTTGTGAGTCTGCTGCCTTAAGCCCCGGA
AGAGGAAGAAGGATGAAGTGTCTGGTGACAGGTGAACAGCTCACTGATGCCGCAAGATGCAGTAAACAG
CAATCTAAGGAAGAGTGGCCTGAAAAGGCTGTGGTTACGTTCATCATTGAAAAGGCACGTCTGTGGTCAG
CTGTTAGATGAGGCACAAGTACCCTGTCTTCCAAGACTGGCTGGCCAGTGTACAGAGCGCATCCATC
AAACCATGCACTATCAGTTTGATGGACCAACAAAGTGGAGT

AG**CGGACCG**ACGCGTACGCGGCCGCTCGAGCAGAACTCATCTCAGAAGAGGATCTGGCAGCAAATGATATCC
TGGATTACAAGGATGACGACGATAAGGTTTAA



[View online »](#)

Protein Sequence: >MR206045 protein sequence
Red=Cloning site Green=Tags(s)

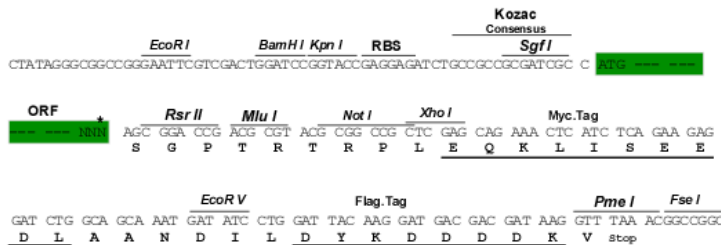
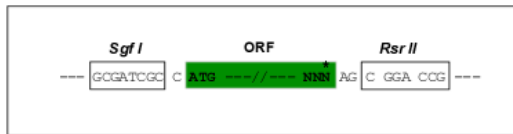
MEPNSQRTKVP AFLSDLGKATLRGIRKCPRCGTFNGTRGLSCKNKTCTGIFRYGARKQPSIEAVKIITGS
 DLQVYSVRQRDRGPDYRCFVELGVSETAIQTVDGTIIITQLSSGRCYVPSCLKAATQGIVENQCQHIKLA
 VCQAEATPLTLKSSVLNALQAAPETKQSLWQLATEPTGPLVQRVTKNIMVVKCKASQKHNLYLHASF
 MQKISSRSLPERRFFCSCQTLRPHKSSVPKAEAAPKCIHFFACLCFAFASDETLAQEFSDFLNFDASGLKE
 IIVPHLGCHAESSVSACESAASKPRKRKKDEVSGAQVNSLMPQDAVNSNLRKSGLKRVPVTS
 SSLKRHVCGQLLDEAQVTL SFQDWLASVTERIHQTMHYQFDGPTKWS

SGPTRTRPLEQKLI SEEDLAANDILDYKDDDDKV

Restriction Sites: SgfI-RsrII

Cloning Scheme:

Cloning sites used for ORF Shutting:



* The last codon before the Stop codon of the ORF

ACCN: BC026926

ORF Size: 1161 bp

OTI Disclaimer: The molecular sequence of this clone aligns with the gene accession number as a point of reference only. However, individual transcript sequences of the same gene can differ through naturally occurring variations (e.g. polymorphisms), each with its own valid existence. This clone is substantially in agreement with the reference, but a complete review of all prevailing variants is recommended prior to use. [More info](#)

OTI Annotation: This clone was engineered to express the complete ORF with an expression tag. Expression varies depending on the nature of the gene.

Components: The ORF clone is ion-exchange column purified and shipped in a 2D barcoded Matrix tube containing 10ug of transfection-ready, dried plasmid DNA (reconstitute with 100 ul of water).

Reconstitution Method:

1. Centrifuge at 5,000xg for 5min.
2. Carefully open the tube and add 100ul of sterile water to dissolve the DNA.
3. Close the tube and incubate for 10 minutes at room temperature.
4. Briefly vortex the tube and then do a quick spin (less than 5000xg) to concentrate the liquid at the bottom.
5. Store the suspended plasmid at -20°C. The DNA is stable for at least one year from date of shipping when stored at -20°C.

RefSeq: [BC026926](#), [AAH26926](#)

RefSeq Size: 2662 bp

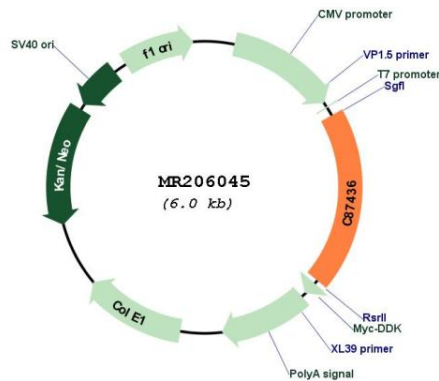
RefSeq ORF: 1163 bp

Locus ID: 232196

Cytogenetics: 6 D1

MW: 42.6 kDa

Product images:



Circular map for MR206045