

Product datasheet for MR205968L3

S1pr1 (NM_007901) Mouse Tagged Lenti ORF Clone

Product data:

Product Type:	Expression Plasmids
Product Name:	S1pr1 (NM_007901) Mouse Tagged Lenti ORF Clone
Tag:	Myc-DDK
Symbol:	S1pr1
Synonyms:	AI849002; Edg1; Lpb1; S; S1; S1p; S1p1
Mammalian Cell Selection:	Puromycin
Vector:	pLenti-C-Myc-DDK-P2A-Puro (PS100092)
E. coli Selection:	Chloramphenicol (34 ug/mL)
ORF Nucleotide Sequence:	The ORF insert of this clone is exactly the same as(MR205968).
Restriction Sites:	SgfI-MluI
Cloning Scheme:	

Cloning sites used for ORF Shuttling:



* The last codon before the Stop codon of the ORF.

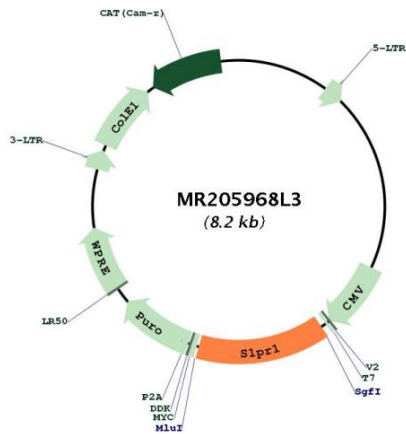
ACCN:	NM_007901
ORF Size:	1149 bp



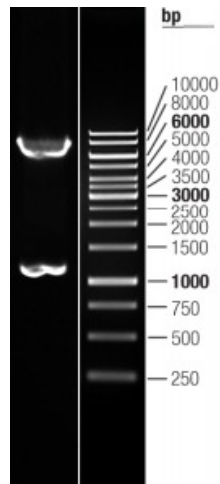
[View online »](#)

OTI Disclaimer:	The molecular sequence of this clone aligns with the gene accession number as a point of reference only. However, individual transcript sequences of the same gene can differ through naturally occurring variations (e.g. polymorphisms), each with its own valid existence. This clone is substantially in agreement with the reference, but a complete review of all prevailing variants is recommended prior to use. More info
OTI Annotation:	This clone was engineered to express the complete ORF with an expression tag. Expression varies depending on the nature of the gene.
Components:	The ORF clone is ion-exchange column purified and shipped in a 2D barcoded Matrix tube containing 10ug of transfection-ready, dried plasmid DNA (reconstitute with 100 ul of water).
Reconstitution Method:	<ol style="list-style-type: none">1. Centrifuge at 5,000xg for 5min.2. Carefully open the tube and add 100ul of sterile water to dissolve the DNA.3. Close the tube and incubate for 10 minutes at room temperature.4. Briefly vortex the tube and then do a quick spin (less than 5000xg) to concentrate the liquid at the bottom.5. Store the suspended plasmid at -20°C. The DNA is stable for at least one year from date of shipping when stored at -20°C.
RefSeq:	NM_007901.5 , NP_031927.2
RefSeq Size:	3029 bp
RefSeq ORF:	1149 bp
Locus ID:	13609
UniProt ID:	O08530
Cytogenetics:	3 G1
Gene Summary:	This gene encodes a G-protein-coupled receptor bound by the lysophospholipid, sphingosine 1-phosphate. The gene product functions in endothelial cells and is involved in vascular and heart development. This receptor is highly expressed in T and B lymphocytes, and it plays a role in T cell and B cell export from peripheral lymphoid organs. This protein is bound and downregulated by FTY720, an exogenous immunosuppressant drug studied in mouse disease models for multiple sclerosis in humans. [provided by RefSeq, Jan 2010]

Product images:



Circular map for MR205968L3



Double digestion of MR205968L3 using SgfI and MluI