

Product datasheet for MR205961

Pard6g (NM_053117) Mouse Tagged ORF Clone

Product data:

Product Type:	Expression Plasmids
Product Name:	Pard6g (NM_053117) Mouse Tagged ORF Clone
Tag:	Myc-DDK
Symbol:	Pard6g
Synonyms:	2410049N21Rik; Par6a
Mammalian Cell Selection:	Neomycin
Vector:	pCMV6-Entry (PS100001)
E. coli Selection:	Kanamycin (25 ug/mL)
ORF Nucleotide Sequence:	>MR205961 ORF sequence Red=Cloning site Blue=ORF Green=Tags(s)

TTTTGTAATACGACTCACTATAGGGCGGCCGGAATTCGTCGACTGGATCCGGTACCGAGGAGATCTGCC
GCC**CGATCGCC**

ATGAACCGGAGTTTTTCATAAGTCTCAGACCCTACGTTCTACGACTGCAGCGCTGTGGAAGTCAAGAGCA
AGTTTGGCGCCGAGTCCGAAGTTCTCCTTGGACCGCCACAAGCCTGGGAAGTTGAAGATTTCTACCA
GCTGGTGGTGACACCCACCACATCTCTAACCCGAGGTGACCATCGGCTATGCTGATGTGCACGGGGAC
CTGCTGCCATCAACAATGACGACAACCTCTGCAAGGCAGTCTCAAGTCAAACCCCTTGCTTCGAGTCT
TCATCCAGAAACGAGAAGAAGCAGACCATTACAGCTTCGGAGCAGGCACTCTGTACGGAAGAAAAAGT
GCTGGTACCCTGAGGGATGACGGTCTGCGTCGGCGTCCCCACCTCAACATCAGCATGCCGATGACTTC
CGCCAGTGTCATCCATCATTGACGTGGACATCCTCCCGGAGACGACCCGCCGAGTGAGGCTCTACAGAC
ACGGTTGTGAGAAGCCACTGGGCTTCTACATTCGAGATGGCACCAGCGTGCAGGTTGACGCCCATGGGCT
AGAAAAGGTACCAGGTATCTTCATTTCTCGAATGGTACCCGGGGGCTTGCAGGAGCACTGGGCTACTG
GCTGTGAATGATGAAGTCTGGAGGTGAATGGGATTGAGGTAGCTGAAAAGACCTTGGATCAAGTACAG
ACATGATGATAGCCAACAGCCACAACCTCATTGTCACTGTCAAGCCGGCAACCAAGGAACAATGTGGT
CCGACAGCAGCCGACGTCCGGCAGCTCTGTGCATTCCACAGACAGCACCAGTCAACAGCCCTGCCA
GGTGCCATGTCTGCAGAATTCTGAGGACGTGGAGAGTGACGAGGAAGCCGACATTTGTCATTGAAGGGG
CTCTAGAACCTCAACACATTCCTAAGACGAGGCTGTACCTCCAGGCAGCCTCTCCAGGGCAATGGCAC
CAGCCTTGCTCACGGGCTGCACAGAAGGACATGAGCCTGCATAGCTCTGGGAGGAGAGCAACGGCAGC
ATCCACAGATTTCTCAGCTCTCTGAAGCCAGACCCCGACACAGCCTGGTCTCCCCAAGGAGGGGTGG
AGGAACATGGGCCAGCCATTACTCT

ACGCGTACGCGGCCGCTCGAGCAGAAACTCATCTCAGAAGAGGATCTGGCAGCAAATGATATCCTGGATT
ACAAGGATGACGACGATAAGGTTTAA



[View online >](#)

Protein Sequence: >MR205961 protein sequence
Red=Cloning site Green=Tags(s)

MNRSFHKSQLRFYDCSAVEVSKSFGAEFRRLDRHKPGKFEDFYQLVVHTHHISNTEVTIGYADVHGD
 LLPINDDNFCKAVSSANPLLRVFIQKREEDHYSFGAGTLSRKKKVLVTLRDDGLRRRPHLNISMPHDF
 RPVSSIIDVDILPETHRRVRLYRHGCEKPLGFYIRDGTSVRVTPHGLEKVPVIFISRMVPGGLAESTGLL
 AVNDEVLEVNGIEVAGKTLDQVTDMMIANSHNLIVTVKAPANQRNNVVRSSRTSGSSVHSTDSTTSHHSLP
 GAHVLQNSDEVSEEDADIVIEGALPEQHIPKTAQAVPPGSLSRANGTSLAHLHRRDMSLHSSGRESNGS
 IHRFLSSLKPPRHSLVLPQGGVEEHGPAITL

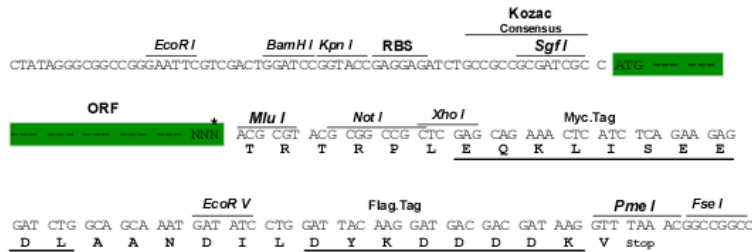
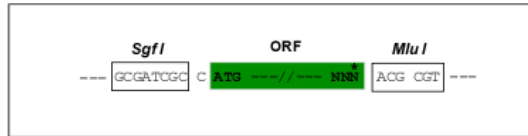
TRTRPLEQKLISEEDLAANDILDYKDDDDKV

Restriction Sites:

SgfI-MluI

Cloning Scheme:

Cloning sites used for ORF Shuttling:



* The last codon before the Stop codon of the ORF

ACCN: NM_053117

ORF Size: 1149 bp

OTI Disclaimer: The molecular sequence of this clone aligns with the gene accession number as a point of reference only. However, individual transcript sequences of the same gene can differ through naturally occurring variations (e.g. polymorphisms), each with its own valid existence. This clone is substantially in agreement with the reference, but a complete review of all prevailing variants is recommended prior to use. [More info](#)

OTI Annotation: This clone was engineered to express the complete ORF with an expression tag. Expression varies depending on the nature of the gene.

Components: The ORF clone is ion-exchange column purified and shipped in a 2D barcoded Matrix tube containing 10ug of transfection-ready, dried plasmid DNA (reconstitute with 100 ul of water).

Reconstitution Method:

1. Centrifuge at 5,000xg for 5min.
2. Carefully open the tube and add 100ul of sterile water to dissolve the DNA.
3. Close the tube and incubate for 10 minutes at room temperature.
4. Briefly vortex the tube and then do a quick spin (less than 5000xg) to concentrate the liquid at the bottom.
5. Store the suspended plasmid at -20°C. The DNA is stable for at least one year from date of shipping when stored at -20°C.

RefSeq: [NM_053117.2](#), [NP_444347.2](#)

RefSeq Size: 3143 bp

RefSeq ORF: 1149 bp

Locus ID: 93737

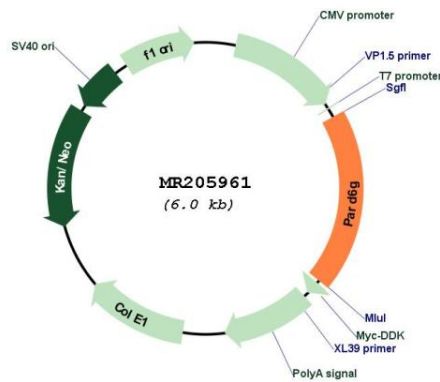
UniProt ID: [Q9JK84](#)

Cytogenetics: 18 E3

MW: 42.3 kDa

Gene Summary: Adapter protein involved in asymmetrical cell division and cell polarization processes. May play a role in the formation of epithelial tight junctions. The PARD6-PARD3 complex links GTP-bound Rho small GTPases to atypical protein kinase C proteins (By similarity). [UniProtKB/Swiss-Prot Function]

Product images:



Circular map for MR205961