

Product datasheet for MR205883

Ergic2 (BC064749) Mouse Tagged ORF Clone

Product data:

Product Type:	Expression Plasmids
Product Name:	Ergic2 (BC064749) Mouse Tagged ORF Clone
Tag:	Myc-DDK
Symbol:	Ergic2
Synonyms:	1200009B18Rik; 4930572C01Rik; AA408438; Ptx1
Mammalian Cell Selection:	Neomycin
Vector:	pCMV6-Entry (PS100001)
E. coli Selection:	Kanamycin (25 ug/mL)
ORF Nucleotide Sequence:	>MR205883 ORF sequence Red=Cloning site Blue=ORF Green=Tags(s)

TTTTGTAATACGACTCACTATAGGGCGCCGGGAATTCGTCGACTGGATCCGGTACCGAGGAGATCTGCC
GCC**CGATCGCC**

ATGAGGCGTCTGAATCGGAGAAAAACCTTAAGTTTGGTGAAGAGTTAGATGCCTTTCCCAAGTTCCTG
ACAGCTATGTGGAGACGTCAGCCAGTGGGGAACAGTTTCTCTAATAGCATTACCAGTATGGCTTTATT
AACATAATGGAATTCTCAGTCTATCAAGATACATGGTGAAGTACGAATATGAAGTAGACAAGGATTTT
TCTAGCAAGTTGCGAATCAACATAGACATTACTGTTGCCATGAAGTGTCACTATGTTGGAGCAGATGTAC
TGGATTTAGCAGAGACCATGGTTGCTTCTGCAGATGGTCTGGCTTATGAACCAGCACTGTTTGACCTTTC
ACCCAGCAGAGAGAGTGGCAGAGGATGCTGCAGCTGATTCAGAGTAGGCTGCAGGAAGAGCATTCCCTT
CAAGACGTGATATTCAAGAGTGCTTTAAAAGTGCATCAACTGCACTGCCACCAAGGGAAGATGATTCAT
CACTGACTCCAGATGCGTGCAGAATCCATGGTCACTCTCTATGTCAATAAAGTAGCAGGGAATTTTCACAT
AACTGTGGGCAAGGCAATCCCACATCCTCGAGGGCATGCACATTTGGCAGCACTTGTCAACCATGATTCT
TACAACTTTTCTCACAGAATAGATCATTGTCTTTGGAGAGCTTGTCCGGGAATTAATCCTTTGG
ATGGAAGTAAAAGATTGCTGTAGATCACACCAGATGTTCCAATATTTACAGTTGTGCCAACAAA
GCTACACACATAACAAGATCTCAGCAGATACCCATCAGTTCTCTGTGACAGAAAGGGAACGCATCAAC
CATGCTGCAGGCAGCCACGGCGTCTGGAATATTTATGAAATATGATCTCAGTTCTCATGGTGACAG
TCACTGAGGAACACATGCCTTTCTGGCAGTTTTTTGTAAGACTCTGTGGTATAATTGGAGGAATCTTTTC
AAACAACAGGCATGTTACATGGAATTGAAAAATTTATAGTGAAATAATTTGCTGTGCTTTAGAGACTGGA
TCCACAGCCTGTCCGTTCTGTCCCCTTTGCGGATGGCCACACAGACAACCCTTACCTTTTTAGAGA
ACAACACACAT

ACGCGTACGCGGCCGCTCGAGCAGAAACTCATCTCAGAAGAGGATCTGGCAGCAATGATATCCTGGATT
ACAAGGATGACGACGATAAGGTTTAA



[View online »](#)

Protein Sequence: >MR205883 protein sequence
Red=Cloning site Green=Tags(s)

MRRLNRRKTL SLVKELDAFPKVPDSYVETSASGGTVSLIAFTTMALLT IMEF SVYQDTWMKYEYVDKDF
 SSKLRINIDITVAMKCHYVGADVLDLAETMVASADGLAYEPALFDLSPQQREWQRMLQLIQSRLQEEHSL
 QDVIFKSAFKSASTALPPREDDSSLTPDACRIHGHLVYVNVAGNFHITVGKAIHPHPRGHAHLAALVNHDS
 YNFSHRIDHLSFGELVPGIINPLDGTETKIAVDHNQMFQYFITVVP TKLHTYKISADTHQFSYTERERIIN
 HAAGSHGVSGIFMKYDLSLMTVTTEEHMPFWQFFVRLCGIIGGIFSTTGMLHGIGKFIVEIICCRFRLG
 SYKPVRSVPFADGHTDNHLPLENNTH

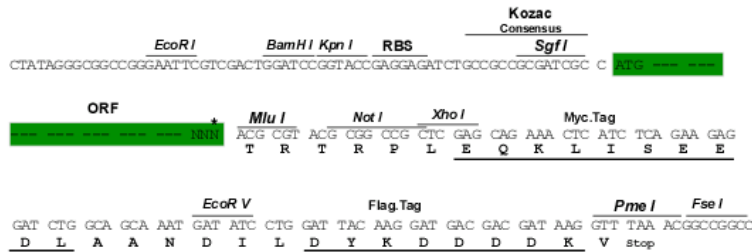
TRTRPLEQKLISEEDLAANDILDYKDDDDKV

Restriction Sites:

SgfI-MluI

Cloning Scheme:

Cloning sites used for ORF Shuttling:



* The last codon before the Stop codon of the ORF

ACCN: BC064749

ORF Size: 1131 bp

OTI Disclaimer: The molecular sequence of this clone aligns with the gene accession number as a point of reference only. However, individual transcript sequences of the same gene can differ through naturally occurring variations (e.g. polymorphisms), each with its own valid existence. This clone is substantially in agreement with the reference, but a complete review of all prevailing variants is recommended prior to use. [More info](#)

OTI Annotation: This clone was engineered to express the complete ORF with an expression tag. Expression varies depending on the nature of the gene.

Components: The ORF clone is ion-exchange column purified and shipped in a 2D barcoded Matrix tube containing 10ug of transfection-ready, dried plasmid DNA (reconstitute with 100 ul of water).

Reconstitution Method:

1. Centrifuge at 5,000xg for 5min.
2. Carefully open the tube and add 100ul of sterile water to dissolve the DNA.
3. Close the tube and incubate for 10 minutes at room temperature.
4. Briefly vortex the tube and then do a quick spin (less than 5000xg) to concentrate the liquid at the bottom.
5. Store the suspended plasmid at -20°C. The DNA is stable for at least one year from date of shipping when stored at -20°C.

RefSeq: [BC064749](#), [AAH64749](#)

RefSeq Size: 1416 bp

RefSeq ORF: 1133 bp

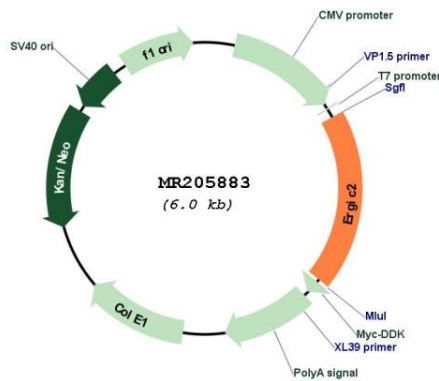
Locus ID: 67456

Cytogenetics: 6 G3

MW: 42.5 kDa

Gene Summary: Possible role in transport between endoplasmic reticulum and Golgi.[UniProtKB/Swiss-Prot Function]

Product images:



Circular map for MR205883