

Product datasheet for MR205829

Zfp92 (BC096436) Mouse Tagged ORF Clone

Product data:

Product Type:	Expression Plasmids
Product Name:	Zfp92 (BC096436) Mouse Tagged ORF Clone
Tag:	Myc-DDK
Symbol:	Zfp92
Mammalian Cell Selection:	Neomycin
Vector:	pCMV6-Entry (PS100001)
E. coli Selection:	Kanamycin (25 ug/mL)
ORF Nucleotide Sequence:	>MR205829 ORF sequence Red=Cloning site Blue=ORF Green=Tags(s)

TTTTGTAATACGACTCACTATAGGGCGGCCGGAATTCGTCGACTGGATCCGGTACCGAGGAGATCTGCC
GCC**CGATCGCC**

ATGGCAGCCACTCTTCTAAGGGCAAAGCCCAAGGTGACAGTGTCTTTGAAGATGTGTGTGTACTTTA
CAAAGACAGAATGGAGGCTTCTGGACCTCAAACAGAGGACCCTCTACAAGCAAGTGATGCTGGAGAACTA
CAGCCATCTGGTGTGACAGTGGATTTGCTTTCTCCAAGCCTAACCTGGTATCCCAGCTGGAGCGAGGGGAG
AAGCCCTGGATTAGAGATGATGGAATGGAGAGTGCAGCAAGATCCTGTGCTGGGAATAGGATAAAGACCA
AGACTTTGACTTCAAACCAAACCTTTTCGGAAGAGGTCTCCTCAGAAATACCTCAGATCCTCATTGCA
GAGACGTCTCACGATTTACAGCCAAATCCCATTGTAAGGTACCAACACTCCAGAATCGCGGATAAGCGA
TATCTATGTGACGAGTGTGGAAAATCCTTCAGCCGCAGCTTCAATCTCATCAAACACCGGATTATCCACA
GCAGAGAGAAACCTTATGAGTGCAGCGAGTGTGGGAAGCAGTTCCAGCGCAGCTTAGCGCTGCTGGAGCA
TCAGCGCATCCACAGCGGCAGCAAGCCCTATGAATGTGGCGAGTGTGGCAAAACCTTCACGCGCAGCTCC
AACCTCGTCAAGCACCAGGTATCCACAGCAGTGCAGTGCATTTGTGTGCCGATGTGTGGTAAAGTGT
TCAGGCGCAGCTTCGCGCTGCTTGAGCACACGCGCATCCACAGCGCGAGCGGCCCTTCGAGTGCACCGA
GTGCGGCAAGGCATTACGCCGAAGCTCCAATCTCATAGAGCATCAGCGCATCCACAGTGGCCAGAAGCCC
TACATCTGCAAGGAGTGCGGGAAGCCCTCAAGGGCGTCTCGCAGCTCATTACCACCAGCTCATCCACC
CGGCGCAAGCCCTTCAGGTGCCATGAGTATGGCAAGGCCTTCGAGGCCCTCTCAGGGCTCAGCCAAACA
CCAGCGGGTCCACAGAGGTGATGTTGCCTGGGCTTATTTGAATTCTGCCATTAAGTCTGGAGTGTCTGG
ACTAGGCATTTGCCACCAAAGTCAGCTTTGAACTATTACTGCAGAACACGCTCCCCTCCTTCTTACAC
AGACT

ACGCGTACGCGGCCGCTCGAGCAGAACTCATCTCAGAAGAGGATCTGGCAGCAAATGATATCCTGGATT
ACAAGGATGACGACGATAAGGTTTAA



[View online »](#)

Protein Sequence: >MR205829 protein sequence
Red=Cloning site Green=Tags(s)

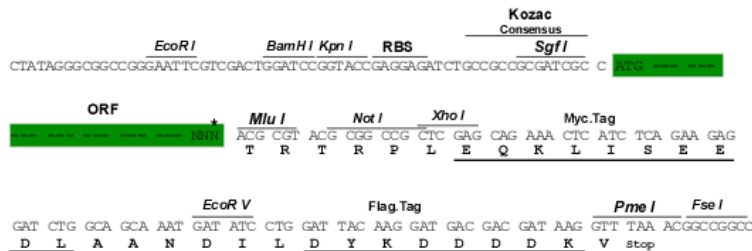
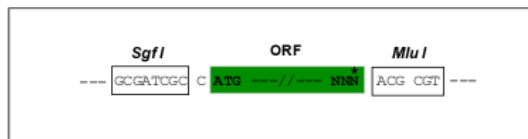
MAATLLRAKPKVTVSFEDVSVYFTKTEWRLLDLKQRTLKQVMLENYSHLVSVGFVAFSKPNLVSQLERGE
 KPWIRDDGMESAARSCAGNRIKTKTLT SKPKLFGRLLRNTSRSSLQRRPHDFRPNP I VRYQHSRIADKR
 YLCQQCGKSF SRSFNLIKHRIIHSREKPYECSECGKQFQRSLALLEHQRIHSGDKPYECGECGKTFTRSS
 NLVKHQVIHSSEMPFVCRMCGKVFRRSFALLEHTRIHSGERPFECTECGKAF SRSNNLIEHQRIHSGQKP
 YICKECGKAFKGVSQLIHHQLIHRGDKPFTCHEYGKAFRGLSGLSQHQRVHRGDVAWAYFEFLPLTLECW
 TRHLPPKSALNYYCRTRSPPSFTQT

TRTRPLEQKLISEEDLAANDILDYKDDDDKV

Restriction Sites: SgfI-MluI

Cloning Scheme:

Cloning sites used for ORF Shuttling:



* The last codon before the Stop codon of the ORF

ACCN: BC096436

ORF Size: 1125 bp

OTI Disclaimer: The molecular sequence of this clone aligns with the gene accession number as a point of reference only. However, individual transcript sequences of the same gene can differ through naturally occurring variations (e.g. polymorphisms), each with its own valid existence. This clone is substantially in agreement with the reference, but a complete review of all prevailing variants is recommended prior to use. [More info](#)

OTI Annotation: This clone was engineered to express the complete ORF with an expression tag. Expression varies depending on the nature of the gene.

Components: The ORF clone is ion-exchange column purified and shipped in a 2D barcoded Matrix tube containing 10ug of transfection-ready, dried plasmid DNA (reconstitute with 100 ul of water).

Reconstitution Method:

1. Centrifuge at 5,000xg for 5min.
2. Carefully open the tube and add 100ul of sterile water to dissolve the DNA.
3. Close the tube and incubate for 10 minutes at room temperature.
4. Briefly vortex the tube and then do a quick spin (less than 5000xg) to concentrate the liquid at the bottom.
5. Store the suspended plasmid at -20°C. The DNA is stable for at least one year from date of shipping when stored at -20°C.

Note: Plasmids are not sterile. For experiments where strict sterility is required, filtration with 0.22um filter is required.

RefSeq: [BC096436](#), [AAH96436](#)

RefSeq Size: 2090 bp

RefSeq ORF: 1127 bp

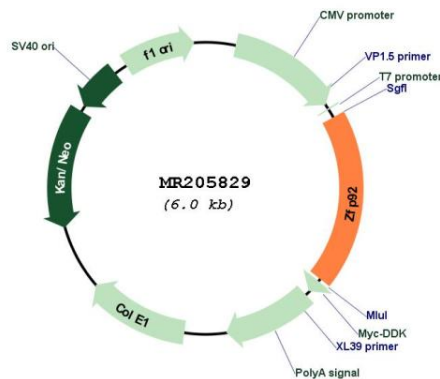
Locus ID: 22754

Cytogenetics: X 37.31 cM

MW: 43.5 kDa

Gene Summary: May be involved in transcriptional regulation.[UniProtKB/Swiss-Prot Function]

Product images:



Circular map for MR205829