

Product datasheet for MR205818

Pdgfrl (NM_026840) Mouse Tagged ORF Clone

Product data:

Product Type: Expression Plasmids
Product Name: Pdgfrl (NM_026840) Mouse Tagged ORF Clone
Tag: Myc-DDK
Symbol: Pdgfrl
Synonyms: 1110039P19Rik; AV013190
Mammalian Cell Selection: Neomycin
Vector: pCMV6-Entry (PS100001)
E. coli Selection: Kanamycin (25 ug/mL)
ORF Nucleotide Sequence: >MR205818 representing NM_026840
 Red=Cloning site Blue=ORF Green=Tags(s)

TTTTGTAATACGACTCACTATAGGGCGGCCGGAATTCGTCGACTGGATCCGGTACCGAGGAGATCTGCC
 GCC**CGATCGCC**

ATGAAGTTTTGGCTGCTGCTCGGACTTCTGTTGCTACACGAAGCGCTGGAAGATGTTGCTGGCCAGCATT
 CTCCTAAGAACAAGCGTCCAAGGAGCAAGGAGAAAACAGAATCAAACCAACCAAAAAAGCCAAACC
 CAAGATTCCTAAGGTAAGGACAGGGACTCCACTGACTCAACCGCAAAGAGCCAGTCCATCATGATGCAA
 GCGATGGGCAACGGTCGCTTCCAGAGCCCTGCTGCCACAGTGAGTCTCCTGGCAGGGCAAACCTCTAGAGC
 TACGATGTAAGGGAAGCAAAGTGGAGTGGAGTTACCCCGCTACTTGGACACCTCAAGGACTCCCGCT
 CACTGTGAAGCAGAGTGAACGCTATGGGCAAGTACTCTGGTCAACTCCACCGCGCCGACACCGGTGAA
 TTCAGCTGCTGGGAGCAACTGTGAATGGCTACATCTGCAGACGGGATGAAGCCAAAACAGGCTCCACCT
 ATATCTTCTTACAGAGAAAGGAGAGCTGTTTGTGCCTTCTCCAGTTACTTTGATGTTGTCTACCTGAA
 CCCGGACAGACAAGCTGTGGTTCCTTGTGAGTGACAGCCCCATCAGCCAAAGTCACGCTCCACAGGGAG
 TTTCCCGCAAAGAAATCCCTGCCAATGGCACGGACATTGTGTACGACATGAAGAGAGTTTCGTGTACC
 TTCAGCCTCATTCCGATCACCAGGTGTGGTCTACTGCAAAGCGGAAGCCGGGGCAAGTCTCAGATCTC
 AGTCAAGTATCAGCTGCTCTATGTAGAGTTCCTAGTGGCCCTCCATCAACAACCATCTTGGCCTCCTCT
 AACAAAGTGAGGGCGGTGATGACATCAGCGTCTCTGACTGTCTCGGGGAGCCTGATGTGGAGTTG
 AATTCAGGTGGCTTTTCTGGGCAAGGACGAAAGGCCTGTGACCATCCAGGACACCTGGAGACTGAT
 TCACAGAGGACTGGGACACACCACAAGAATCTCCAGAGTGTCTATATCGTGAAGACTTTGAGACCATT
 GATGCGGGCTACTACATATGCACAGCTCAGAATCTCCGAGGACAGACCACAGTAGCGACCACTGTTGAGT
 TTTCC

ACGCGTACGCGGCCGCTCGAGCAGAAACTCATCTCAGAAGAGGATCTGGCAGCAATGATATCCTGGATT
 ACAAGGATGACGACGATAAGGTTTAA



[View online »](#)

Protein Sequence: >MR205818 representing NM_026840
 Red=Cloning site Green=Tags(s)

MKFWLLGLLLLHEALEDVAGQHSPKNKRPKEQGENRIKPTNKKAKPKIPVKDRDSTDSTAKSQSIMMQ
 AMGNRFQRPAATVSLLAGQTLRLCKGSKVSEYSPAYLDTFKDSRLTVKQSERYQLTLVNSTAADTGE
 FSCWEQLCNGYICRRDEAKTGSTYIFFTEKGELFVSPSYFDVVYLNPDQAVVPCRVTAPSAKVTLHRE
 FPAKEIPANGTDIVYDMKRGFVYLQPHSDHQGVVYCKAEAGKSQISVKYQLLYVEVPSGPPSTTILASS
 NKVRGGDDISVLCTVLGEPDVEVEFRWLFPGQKDERPVTIQDTWRLIHRGLGHTTRISQSVIIVEDFETI
 DAGYYICTAQNLRGQTTVATTVVEFS

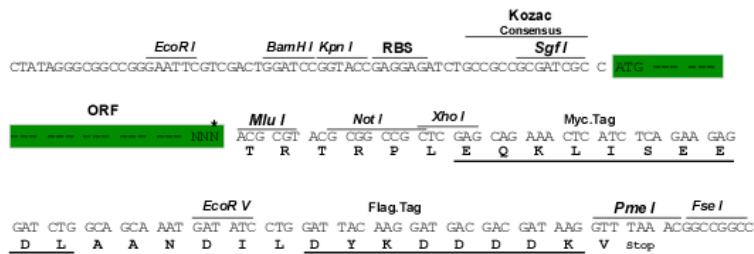
TRTRPLEQKLISEEDLAANDILDYKDDDDKV

Restriction Sites:

SgfI-MluI

Cloning Scheme:

Cloning sites used for ORF Shuttling:



* The last codon before the Stop codon of the ORF

ACCN: NM_026840

ORF Size: 1125 bp

OTI Disclaimer: The molecular sequence of this clone aligns with the gene accession number as a point of reference only. However, individual transcript sequences of the same gene can differ through naturally occurring variations (e.g. polymorphisms), each with its own valid existence. This clone is substantially in agreement with the reference, but a complete review of all prevailing variants is recommended prior to use. [More info](#)

OTI Annotation: This clone was engineered to express the complete ORF with an expression tag. Expression varies depending on the nature of the gene.

Components: The ORF clone is ion-exchange column purified and shipped in a 2D barcoded Matrix tube containing 10ug of transfection-ready, dried plasmid DNA (reconstitute with 100 ul of water).

Reconstitution Method:

1. Centrifuge at 5,000xg for 5min.
2. Carefully open the tube and add 100ul of sterile water to dissolve the DNA.
3. Close the tube and incubate for 10 minutes at room temperature.
4. Briefly vortex the tube and then do a quick spin (less than 5000xg) to concentrate the liquid at the bottom.
5. Store the suspended plasmid at -20°C. The DNA is stable for at least one year from date of shipping when stored at -20°C.

RefSeq: [NM_026840.2](#), [NP_081116.2](#)

RefSeq Size: 1542 bp

RefSeq ORF: 1128 bp

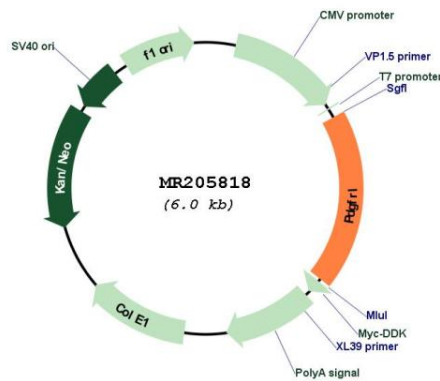
Locus ID: 68797

UniProt ID: [Q6PE55](#)

Cytogenetics: 8 A4

MW: 42.4 kDa

Product images:



Circular map for MR205818