

## Product datasheet for MR205797

### Tram1 (NM\_028173) Mouse Tagged ORF Clone

#### Product data:

Product Type:	Expression Plasmids
Product Name:	Tram1 (NM_028173) Mouse Tagged ORF Clone
Tag:	Myc-DDK
Symbol:	Tram1
Synonyms:	1810049E02Rik; TR; TRAMP
Mammalian Cell Selection:	Neomycin
Vector:	pCMV6-Entry (PS100001)
E. coli Selection:	Kanamycin (25 ug/mL)
ORF Nucleotide Sequence:	>MR205797 representing NM_028173 Red=Cloning site Blue=ORF Green=Tags(s)

TTTTGTAATACGACTCACTATAGGGCGCCGGGAATTCGTCGACTGGATCCGGTACCGAGGAGATCTGCC  
GCC**CGATCGCC**

ATGGCGATTTCGCAAGAAGAGCAACAAGAACCCGCCGCTGCTGAGCCACGAATTCCTGCTGCAGAATCACG  
CGGACATCGTCTCCTGCCTGGCGATGCTTTTCTGCTGGGGCTTATGTTTCGAGGTAACAGCAAAGGAGC  
CATCATCTTTGTTGCTCTTCAGTATAATGTTACCCGCCCTGCAACAGAAGAACAAGCTACTGAATCAGCA  
TCCCTATACACTATGGTATCAAAGACTTGGCTACAGTTTGTCTACATGCTAGTGGCGATAATTATTC  
ATGCCATAATTCAGGAGTATGTGTTGGATAAAATTAACCGACGGATGCACTTCTCCAAAACGAAGCACAG  
CAAGTTTAACGAGTCTGGTCAGCTCAGTGCATTCTACCTTTTGCCTGTGTGGGGCACGTTTCATTCTC  
ATCTCCGAAAACATATCTCAGACCCAACATATCCTGTGGAGAGCCTATCCCATAACTGATGACATTTT  
AGACGAAGTTTTTCTACATCTCCAGCTGGCGTACTGGCTCCATGCATTCCCTGAACTCTACTTCCAGAA  
AACCAAAAAGAAGATATCCCTCGTCAGCTCGTCTACATTGGCCTTTATCTTTTCATATTGCTGGAGCC  
TATCTTCTGAACTTGAACCACCTGGCCTTGTCTTCTGGTGTGCACTATTTGTTGAATTTCTTTTCC  
ACATTTCTCGTCTATTTTATTTTAGTGACGAGAAGTATCAGAAAGGGTTTTCTCTCTGGGCAGTTCTTTT  
TGTTTTGGGAAGACTTCTGACTTAATTTCTTTCAGTCTTACTGTTGGTTTTGGTCTCGCAAGAGCGGAG  
AATCAGAAGCTGGACTTTAGTACTGAACTTCAACGTGTTGGCGTTAGGATCGCTGTTCTCGCGTCCA  
TTTGATCACACAAGCCTTCATGATGTGAAGTTCATTAACCTCCAGCTTCGGAGGTGGAGGGAACATTC  
TGCCCTCCAGGCCACCTGTGAAAAGGAAACCGCCGTGACCAAGGCAGGTCTTCCAGAAAAGGAAACA  
GAGAACGGTGTGAACGGCACAGTCACATCAAACGGAGCAGACTCCCTCGGAACAGGAAAGAGAAGTCTT  
CG

**ACGCGT**ACGCGGCCGCTCGAGCAGAAACTCATCTCAGAAGAGGATCTGGCAGCAAATGATATCCTGGATT  
ACAAGGATGACGACGATAAGGTTTAA



[View online »](#)

**Protein Sequence:** >MR205797 representing NM\_028173

Red=Cloning site Green=Tags(s)

MAIRKKSNNKPILLSHEFLQLNHADIVSCLAMLFLLGLMFEVTAKGAIIFVALQYNVTRPATEEQATESA  
 SLYHYGIKDLATVLFYMLVAIIHAIIEYVLDKINRRMHFSKTKHSKFNEGQLSAFYLFACVWGTFIL  
 ISENYISDPTILWRAYPHNLMTFQTKFFYISQLAYWLHAFPEL YFQKTKKEDIPRQLVYIGLYLFHIA  
 YLLNLNHLGLVLLVLYHFVEFLFHSIRLFYFSDKEYQKGFSLWAVLVFLGRLLTLILSVLTVGFLARAE  
 NQKLDFFSTGNFNVLAVRIA VLASICITQAFMMWKFINFQLRRWREHSFAQAPPVKRKP VAVTKGRSSRKG  
 TENG VNGTVTSNGADSPRNRKEKSS

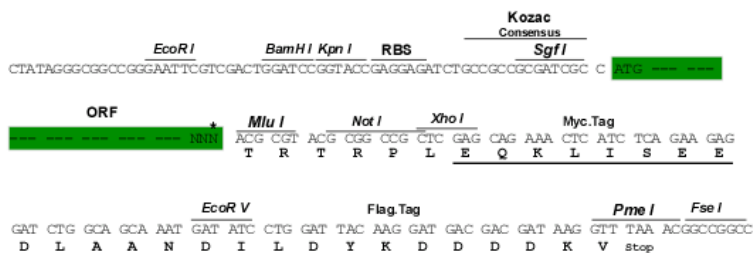
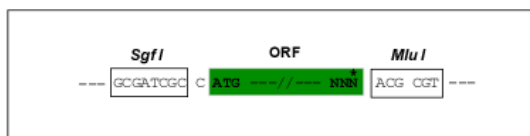
TRTRPLEQKLISEEDLAANDILDYKDDDDKV

**Chromatograms:** [https://cdn.origene.com/chromatograms/mm9027\\_c07.zip](https://cdn.origene.com/chromatograms/mm9027_c07.zip)

**Restriction Sites:** SgfI-MluI

**Cloning Scheme:**

Cloning sites used for ORF Shuttling:



\* The last codon before the Stop codon of the ORF

**ACCN:** NM\_028173

**ORF Size:** 1122 bp

**OTI Disclaimer:** The molecular sequence of this clone aligns with the gene accession number as a point of reference only. However, individual transcript sequences of the same gene can differ through naturally occurring variations (e.g. polymorphisms), each with its own valid existence. This clone is substantially in agreement with the reference, but a complete review of all prevailing variants is recommended prior to use. [More info](#)

**OTI Annotation:** This clone was engineered to express the complete ORF with an expression tag. Expression varies depending on the nature of the gene.

**Components:** The ORF clone is ion-exchange column purified and shipped in a 2D barcoded Matrix tube containing 10ug of transfection-ready, dried plasmid DNA (reconstitute with 100 ul of water).

**Reconstitution Method:**

1. Centrifuge at 5,000xg for 5min.
2. Carefully open the tube and add 100ul of sterile water to dissolve the DNA.
3. Close the tube and incubate for 10 minutes at room temperature.
4. Briefly vortex the tube and then do a quick spin (less than 5000xg) to concentrate the liquid at the bottom.
5. Store the suspended plasmid at -20°C. The DNA is stable for at least one year from date of shipping when stored at -20°C.

**RefSeq:** [NM\\_028173.5](#), [NP\\_082449.1](#)

**RefSeq Size:** 2888 bp

**RefSeq ORF:** 1125 bp

**Locus ID:** 72265

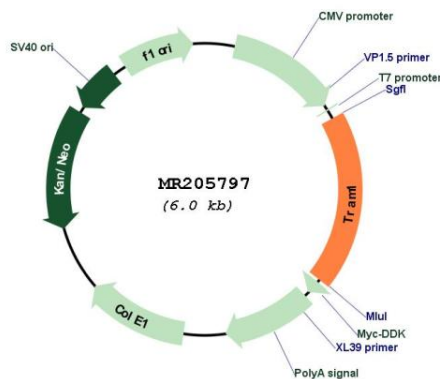
**UniProt ID:** [Q91V04](#)

**Cytogenetics:** 1 A3

**MW:** 43.5 kDa

**Gene Summary:** This gene encodes a multi-pass transmembrane protein of the endoplasmic reticulum (ER). It is involved in the process of cotranslational translocation of secretory proteins into the ER. [provided by RefSeq, Dec 2014]

### Product images:



Circular map for MR205797