

## Product datasheet for MR205787

### Tdh (NM\_021480) Mouse Tagged ORF Clone

#### Product data:

Product Type:	Expression Plasmids
Product Name:	Tdh (NM_021480) Mouse Tagged ORF Clone
Tag:	Myc-DDK
Symbol:	Tdh
Mammalian Cell Selection:	Neomycin
Vector:	pCMV6-Entry (PS100001)
E. coli Selection:	Kanamycin (25 ug/mL)
ORF Nucleotide Sequence:	>MR205787 ORF sequence Red=Cloning site Blue=ORF Green=Tags(s)

TTTTGTAATACGACTCACTATAGGGCGGCCGGAATTCGTCGACTGGATCCGGTACCGAGGAGATCTGCC  
GCC**CGATCGCC**

ATGCTATTCTTGGGATGCTAAACAGGTGGTCAATGGGACTGCACAGAGCAAAGCCTCTAGCTGCCGGA  
AGCTTGTCTTGCCTTGAAGTTTCTAGGCACCTCCCAGCACCGGATCCCAGCCGATGCCAACTTCCACTC  
CACCTCGATCTCGGAAGCTGAGCCTCCTCGGTCTTGATCACAGGGGTCTTGGCCAGCTGGGGTAGGA  
CTTGCTAACCTCCTGAGGAAACGATTTGGGAAGAACAATGTGATCCTATCAGACATAAGGAAGCCCCCTG  
CTCATGTCTCCACAGTGGCCGTTTGTATGCCAACATCTTGGATTACAAGAGCCTCCGTGAGATCGT  
GGTGAACCACCGTATCAGCTGGCTGTTTCACTACAGTGCCTGCTGAGTGCCGTGGGAGAGGCAAATGTG  
TCCTTAGCCAGAGATGTGAATATAACTGGATTGCATAACGTTCTAGATGTTGCAGCTGAATAACAAGTGA  
GATTGTTTGTGCCAGCACGATTGGAGCCTTTGGACCTACCTCTCCCCGGAACCTGCACCCGATCTCTG  
TATTCAAAGGCCTAGGACCATCTATGGGGTATCCAAGTCCACACAGAGCTCATGGGAGAATACTATTAT  
TACCGGTACGGGTAGATTTTCGGTGCCTGCGTTATCCTGGAATCATTCTGCAGATTCCAGCCTGGAG  
GAGGAACAAGTACTACGCCGTCCAGATTTCCACGCTGCAGCAAAGAACGGCACATTGAGTGCAACCT  
CGAGGCTGGCACCAGGCTCCCAATGATGTACATCAGTACTGCCTCAGGGCCACCCTGGAGGTCATGGAA  
GCCCTGCCGAGCGCCTGTCCATGAGAACCTACAACATCAGCGCCATGAGCTTACCCCCGAAGAGCTGG  
CCAGGGCTCCGCAAGCACGCGCTGACTTCCAGATCACCCACTGCGTGGATCCCTCCGACAGGCCAT  
AGCGGAGAGCTGGCCATGATTCTAGATGACAGCAATGCTCGGAAGGACTGGGGCTGGAAGCATGACTTT  
GATCTTCCAGAGTTGGTGGCTACGATGCTCAACTTCCACGGCGTCAGCACCAGAGTTGCCAAGTGAAC

**ACGCGT**ACGCGGCCGCTCGAGCAGAACTCATCTCAGAAGAGGATCTGGCAGCAAATGATATCCTGGATT  
ACAAGGATGACGACGATAAGGTTTAA



[View online »](#)

**Protein Sequence:** >MR205787 protein sequence  
 Red=Cloning site Green=Tags(s)

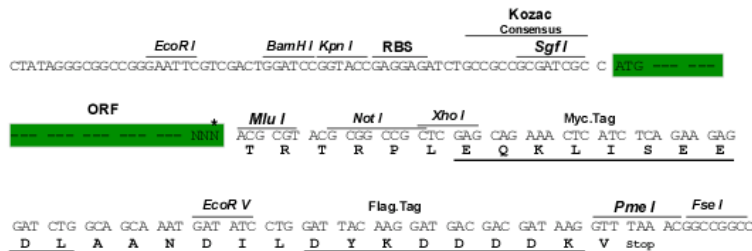
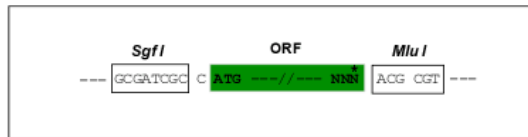
MLFLGMLKQVVNGTAQSKASSCRKLVLPKFLGTSQHRIPADANFHSTSISEAEPPrVLITGGLGQLGVG  
 LANLLRKRFGKNNVILSDIRKPPAHVHSGPFVYANILDYKSLREIVVNHRI SWLFHYSALL SAVGEANV  
 SLARDVNITGLHNVLDAAEYNVRLFVPSTIGAFGPTSPRNPAPDL CIQRPRTIYGVSKVHTELMGEYYY  
 YRYGLDFRCLRYPGIISADSQPGGGTDDYAVQIFHAAAKNGTFECNLEAGTRLPMMYISDCLRATLEVME  
 APAERLSMRTYNISAMSFPEELAQALRKHAPDFQITHCVDP LRQAIAESWPMILDDSNARKDWGKHD  
 DLPELVATMLNFHGVSTRVAQVN

TRTRPLEQKLISEEDLAANDILDYKDDDDKV

**Restriction Sites:** SgfI-MluI

**Cloning Scheme:**

Cloning sites used for ORF Shuttling:



\* The last codon before the Stop codon of the ORF

**ACCN:** NM\_021480

**ORF Size:** 1122 bp

**OTI Disclaimer:** The molecular sequence of this clone aligns with the gene accession number as a point of reference only. However, individual transcript sequences of the same gene can differ through naturally occurring variations (e.g. polymorphisms), each with its own valid existence. This clone is substantially in agreement with the reference, but a complete review of all prevailing variants is recommended prior to use. [More info](#)

**OTI Annotation:** This clone was engineered to express the complete ORF with an expression tag. Expression varies depending on the nature of the gene.

**Components:** The ORF clone is ion-exchange column purified and shipped in a 2D barcoded Matrix tube containing 10ug of transfection-ready, dried plasmid DNA (reconstitute with 100 ul of water).

**Reconstitution Method:**

1. Centrifuge at 5,000xg for 5min.
2. Carefully open the tube and add 100ul of sterile water to dissolve the DNA.
3. Close the tube and incubate for 10 minutes at room temperature.
4. Briefly vortex the tube and then do a quick spin (less than 5000xg) to concentrate the liquid at the bottom.
5. Store the suspended plasmid at -20°C. The DNA is stable for at least one year from date of shipping when stored at -20°C.

**RefSeq:** [NM\\_021480.4](#), [NP\\_067455.4](#)

**RefSeq Size:** 1900 bp

**RefSeq ORF:** 1122 bp

**Locus ID:** 58865

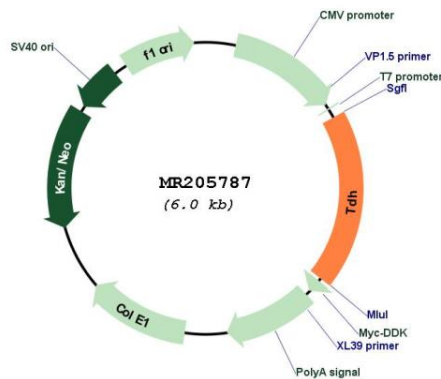
**UniProt ID:** [Q8K3F7](#)

**Cytogenetics:** 14 D1

**MW:** 41.4 kDa

**Gene Summary:** Catalyzes the NAD(+)-dependent oxidation of L-threonine to 2-amino-3-ketobutyrate, mediating L-threonine catabolism.[UniProtKB/Swiss-Prot Function]

## Product images:



Circular map for MR205787