

Product datasheet for MR205711

Gpr85 (NM_145066) Mouse Tagged ORF Clone

Product data:

Product Type: Expression Plasmids
 Product Name: Gpr85 (NM_145066) Mouse Tagged ORF Clone
 Tag: Myc-DDK
 Symbol: Gpr85
 Synonyms: 2900026B03Rik
 Mammalian Cell Selection: Neomycin
 Vector: pCMV6-Entry (PS100001)
 E. coli Selection: Kanamycin (25 ug/mL)
 ORF Nucleotide Sequence: >MR205711 ORF sequence
 Red=Cloning site Blue=ORF Green=Tags(s)

TTTTGTAATACGACTCACTATAGGGCGGCCGGAATTCGTCGACTGGATCCGGTACCGAGGAGATCTGCC
 GCC**CGATCGCC**

ATGGCGAACTATAGCCATGCAGCCGACAACATTTGCAAAATCTCTCGCCTCTAACAGCCTTTCTGAAAC
 TGACTTCCCTGGGTTTCATAATAGGAGTCAGCGTTGTGGGCAACCTTCTGATCTCCATTTGCTAGTGAA
 AGATAAGACCTTGCATAGAGCTCCTTACTACTTCTGCTGGATCTGTGCTGCTCAGACATCCTCAGATCT
 GCAATTTGTTTTCCATTTGTATTCAACTCTGTCAAAAATGGCTCCACCTGGACTTACGGGACTCTGACTT
 GCAAAGTGATTGCCTTCCCTGGGGTTTTGTCTGTTTCCACACTGCCTTCATGCTTTCTGCATCAGCGT
 CACCAGATACTTAGCCATCGCCATCACCGCTTCTATACAAAGAGGCTGACCTTTTGGACGTGTTTGGCT
 GTGATCTGCATGGTGTGGACTCTGTCCGTGGCCATGGCATTCCCCCAGTTTTAGATGTAGGCACCTACT
 CCTTCATTAGGGAGGAGGATCAATGCACCTTCCAACACCGCTCCTTCAGGGCTAACGATTCCCTAGGATT
 TATGCTGCTCCTTGTCTCATCCTAGCCACACAGCTTGTCTACCTCAAGCTGATATTTTTGTCCAC
 GATCGAAGGAAAATGAAGCCAGTCCAGTTTGTAGCAGCAGTGAGTCAGAACTGGACCTTTCATGGCCCTG
 GAGCTAGCGGCCAGGCAGCTGCCAATTGGCTAGCAGGATTTGGAAGGGTCCCACACCACCCACCTTGCT
 GGGCATCAGGCAAAATGCGAATACCACAGGCAGAAGGCGGCTATTGGTCTGGATGAGTTCAAAATGGAG
 AAAAGAATCAGCAGAATGTTTTATATAATGACTTTCCTTCTAACCTTGTGGGTCCCTACCTGGTGG
 CCTGCTATTGGAGATTTTTGCACGAGGGCTGTAGTACCAGGGGATTCTAACAGCCGCTGTCTGGAT
 GAGTTTTGCCCAAGCAGGAATCAATCCCTTTGTCTGCATTTTCTCCAACAGGGAGCTGAGGCGCTGTTTC
 AGCACAACTTCTTTACTGCAGAAAATCCAGGTTACCAAGGAACTTACTGTGTTATA

ACGCGTACGCGGCCGCTCGAGCAGAACTCATCTCAGAAGAGGATCTGGCAGCAATGATATCCTGGATT
 ACAAGGATGACGACGATAAGGTTTAA



[View online »](#)

Protein Sequence: >MR205711 protein sequence
 Red=Cloning site Green=Tags(s)

MANYSHAADNILQNL SPLTAFLKLTSLGFIIGVSVVGNLLISILLVKDKTLHRAPYYFLDLCCSDILRS
 AICFPFVFN SVKNGSTWYGTLTCKVIAFLGVLSCFHTAFMLFCISVTRYLAIAHHRFYTKRLTFWTCLA
 VICMVWTL SVAMAFPVLDVGTYSFIREEDQCTFQHRSFANDSLGFMLLLALILLATQLVYLKLIFFVH
 DRRKMKPVQFVAAVSQNWTFHGPASGQAAANWLAGFGRGPTPPTLLGIRQNANTTGRRLLVLDEFKME
 KRISRMYIMTFLFLTLWGPYLVACYWRV FARGPVVPGGFLTAAVWMSFAQAGINPFVCFISNRELRRCF
 STLLLYCRKSRLPREPYCVI

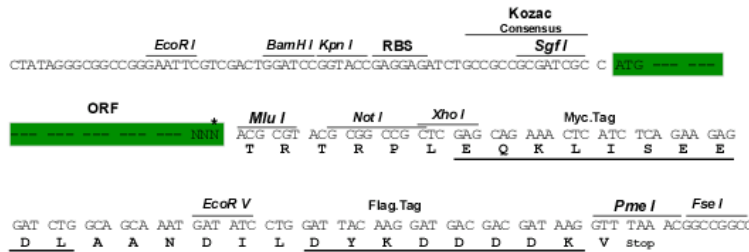
TRTRPLEQKLISEEDLAANDILDYKDDDDKV

Restriction Sites:

Sgfl-MluI

Cloning Scheme:

Cloning sites used for ORF Shuttling:



* The last codon before the Stop codon of the ORF

ACCN: NM_145066

ORF Size: 1113 bp

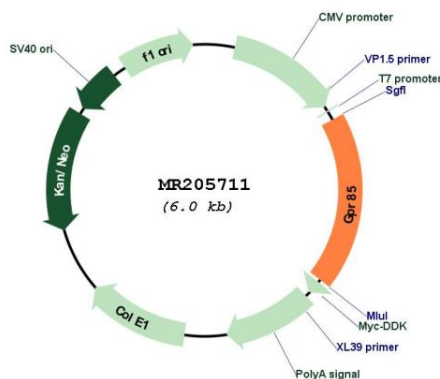
OTI Disclaimer: Due to the inherent nature of this plasmid, standard methods to replicate additional amounts of DNA in E. coli are highly likely to result in mutations and/or rearrangements. Therefore, OriGene does not guarantee the capability to replicate this plasmid DNA. Additional amounts of DNA can be purchased from OriGene with batch-specific, full-sequence verification at a reduced cost. Please contact our customer care team at custsupport@origene.com or by calling 301.340.3188 option 3 for pricing and delivery.

The molecular sequence of this clone aligns with the gene accession number as a point of reference only. However, individual transcript sequences of the same gene can differ through naturally occurring variations (e.g. polymorphisms), each with its own valid existence. This clone is substantially in agreement with the reference, but a complete review of all prevailing variants is recommended prior to use. [More info](#)

OTI Annotation: This clone was engineered to express the complete ORF with an expression tag. Expression varies depending on the nature of the gene.

- Components:** The ORF clone is ion-exchange column purified and shipped in a 2D barcoded Matrix tube containing 10ug of transfection-ready, dried plasmid DNA (reconstitute with 100 ul of water).
- Reconstitution Method:**
1. Centrifuge at 5,000xg for 5min.
 2. Carefully open the tube and add 100ul of sterile water to dissolve the DNA.
 3. Close the tube and incubate for 10 minutes at room temperature.
 4. Briefly vortex the tube and then do a quick spin (less than 5000xg) to concentrate the liquid at the bottom.
 5. Store the suspended plasmid at -20°C. The DNA is stable for at least one year from date of shipping when stored at -20°C.
- RefSeq:** [NM_145066.5](#)
- RefSeq Size:** 2971 bp
- RefSeq ORF:** 1113 bp
- Locus ID:** 64450
- UniProt ID:** [P60894](#)
- Cytogenetics:** 6 A1
- MW:** 42 kDa
- Gene Summary:** Orphan receptor.[UniProtKB/Swiss-Prot Function]

Product images:



Circular map for MR205711