

Product datasheet for **MR205608L4V**

Tmem30a (NM_133718) Mouse Tagged ORF Clone Lentiviral Particle

Product data:

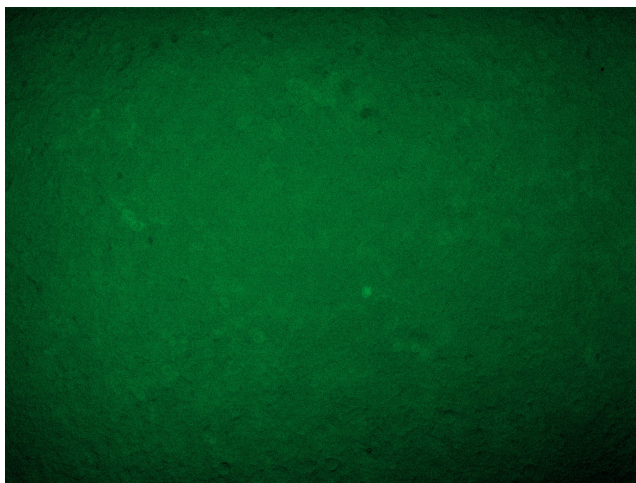
Product Type:	Lentiviral Particles
Product Name:	Tmem30a (NM_133718) Mouse Tagged ORF Clone Lentiviral Particle
Symbol:	Tmem30a
Synonyms:	2010200I23Rik; AW540225; Cdc50a; D9Wsu20e
Mammalian Cell Selection:	Puromycin
Vector:	pLenti-C-mGFP-P2A-Puro (PS100093)
Tag:	mGFP
ACCN:	NM_133718
ORF Size:	1095 bp
ORF Nucleotide Sequence:	The ORF insert of this clone is exactly the same as(MR205608).
OTI Disclaimer:	The molecular sequence of this clone aligns with the gene accession number as a point of reference only. However, individual transcript sequences of the same gene can differ through naturally occurring variations (e.g. polymorphisms), each with its own valid existence. This clone is substantially in agreement with the reference, but a complete review of all prevailing variants is recommended prior to use. More info
OTI Annotation:	This clone was engineered to express the complete ORF with an expression tag. Expression varies depending on the nature of the gene.
RefSeq:	NM_133718.2 , NP_598479.1
RefSeq Size:	3680 bp
RefSeq ORF:	1095 bp
Locus ID:	69981
UniProt ID:	Q8VEK0
Cytogenetics:	9 43.82 cM



[View online »](#)

Gene Summary:

Accessory component of a P4-ATPase flippase complex which catalyzes the hydrolysis of ATP coupled to the transport of aminophospholipids from the outer to the inner leaflet of various membranes and ensures the maintenance of asymmetric distribution of phospholipids. Phospholipid translocation seems also to be implicated in vesicle formation and in uptake of lipid signaling molecules. The beta subunit may assist in binding of the phospholipid substrate. Required for the proper folding, assembly and ER to Golgi exit of the ATP8A2:TMEM30A flippase complex. ATP8A2:TMEM30A may be involved in regulation of neurite outgrowth, and, reconstituted to liposomes, predominantly transports phosphatidylserine (PS) and to a lesser extent phosphatidylethanolamine (PE). The ATP8A1:TMEM30A flippase complex seems to play a role in regulation of cell migration probably involving flippase-mediated translocation of phosphatidylethanolamine (PE) at the plasma membrane. Required for the formation of the ATP8A2, ATP8B1 and ATP8B2 P-type ATPase intermediate phosphoenzymes. Involved in uptake of platelet-activating factor (PAF). Can also mediate the export of alpha subunits ATP8A1, ATP8B1, ATP8B2, ATP8B4, ATP10A, ATP10B, ATP10D, ATP11A, ATP11B and ATP11C from the ER to other membrane localizations. [UniProtKB/Swiss-Prot Function]

Product images:

[MR205608L4] was used to prepare Lentiviral particles using [TR30037] packaging kit. HEK293T cells were transduced with MR205608L4V particle to overexpress human Tmem30a-mGFP fusion protein.