

## Product datasheet for MR205596

### Pld5 (BC100428) Mouse Tagged ORF Clone

#### Product data:

Product Type:	Expression Plasmids
Product Name:	Pld5 (BC100428) Mouse Tagged ORF Clone
Tag:	Myc-DDK
Symbol:	Pld5
Synonyms:	B230365F16Rik
Mammalian Cell Selection:	Neomycin
Vector:	pCMV6-Entry (PS100001)
E. coli Selection:	Kanamycin (25 ug/mL)
ORF Nucleotide Sequence:	>MR205596 representing BC100428 Red=Cloning site Blue=ORF Green=Tags(s)

GACGTTGTATACGACTCCTATAGGGCGGCCGGAATTCGTCGACTGGATCCGGTACCGAGGAGATCTGCC  
GCCGGCGGCC

ATGGGAGAGGATGAGGATGGACTCTCAGAGAAGAATTGCCAAAATAAATGTCGAATTGCTCTTGTGGAAA  
ACATTCCTGAAGGCCTTAACTACTCTGAAGATGCCCGTTTCACCTACCGCTCTTCCAAGGCTGGATGAA  
CTTACTCAACATGGCCAAAAGTCTGTGGACATAGTGTCTTCCATTGGGACCTCAACCACACTCACCCA  
GCTGCATGTCAGGGTCAACGTCTCTTTGAGAAGTTGCTCCAGCTGACGTCGCAAAACATCGAAGTCAAGC  
TGGTGAGCGACGTGACCGCAGATTCAAAGTATTAGAAGCCTTGAAGTTAAAGGGTGTGAGGTGACATA  
CATGAACATGACCGCCTACAACAAGGGCCGGCTGCAAGTCGTCCTTCTGGATTGTGGACAAAACAGCATGTG  
TACATTGGCAGTGCAGGCTTAGACTGGCGATCGCTTGGACAGATGAAAGAAGTCCGGTGTCTTCTTACA  
ACTGCAGCTGCCTGGTCCTAGATTTACAAGGATATTCGCTTTATATAGCTCATTAAAAATCAAGAGCAG  
AGTACCTCAGACCTGGTCCAAGAGACTCTATGGAGTCTATGACAATGAGAAGAAGCTTACGCTCCAATTG  
AACGAAACCAAGTCACAGGCCTTTGTGTCGAACTCTCCAAACTCTTTTGCCTAAAAACAGAAGCTTTG  
ACATCGATGCCATCTACAGCGTGATTGACGATGCCAAACAGTACGTGTACATTGCCGTACCGACTACCT  
GCCTATCTCCAGCAGCAGCAGCAAAAGGACTTACTGGCCAGATTTAGATGGGAAGATAAGAGAAGCATT  
GTTTTACGAAGCGTTAAAGTCCGGCTGCTCATAAGCTTCTGGAAGGAGACTGATCCCCTACGTTCACT  
TCATCTCGTCTCTTAAAGCTATTTGCACTGAAATAGCCAAGTGCAGTTTGAAGTTAAATTTTTGATCT  
GGAAAGAGAGAATGCTTGTGCAACGAAAGAACAAAAGAACCAGACCTTTCCCAAATTAACCGCAACAAG  
TACATGGTGACAGACGGGCAGCTTACATCGGAAATTTTAC

ACGCGTACGCGGCCGCTCGAGCAGAACTCATCTCAGAAGAGGATCTGGCAGCAATGATATCCTGGATT  
ACAAGGATGACGACGATAAGGTTAA



[View online »](#)

**Protein Sequence:** >MR205596 representing BC100428  
Red=Cloning site Green=Tags(s)

MGEDDGLSEKNCQNKCRIALVENIPEGLNYSADPFHLPLFQGWMLLNMAKKSVDIVSSHWDLNHTHP  
AACQGQRLFEKLLQLTSQNIKLVSDVTADSKVLEALKLGAEVYMNMTAYNKGRLLQSSFWIVDKQHV  
YIGSAGLDWRSLGQMKELGVIFYNCSCLVLDLQRIFALYSSLKFKSRVPQTWSKRLYGVDNEKLLQLQL  
NETKSQAFVSNPKLFCPKNRSFDIDAIYSVIDDAKQYVYIAVTDYLPISSTSSKRTYWPDLGKIREAL  
VLRSVKVRLLISFWKETDPLTFNFISLKAICTEIANCSLKVKFFDLERENACATKEQKNQTFPKLNRNK  
YMVTDGAAAYIGNFD

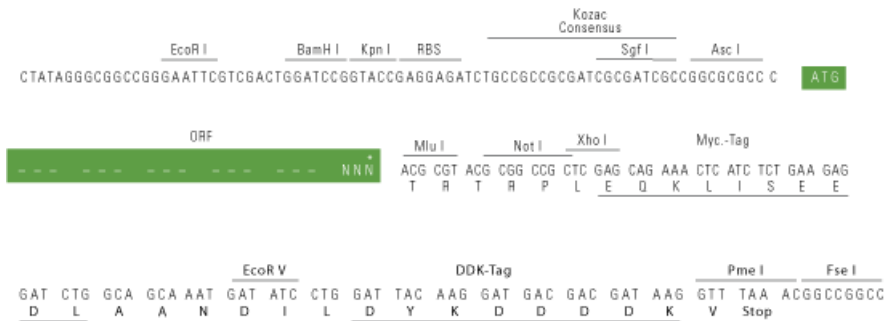
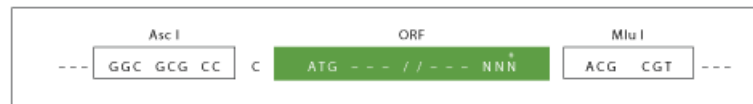
TRTRPLEQKLISEEDLAANDILDYKDDDDKV

**Restriction Sites:**

AscI-MluI

**Cloning Scheme:**

Cloning sites used for ORF Shuttling:



\* The last codon before the Stop codon of the ORF

**ACCN:** BC100428

**ORF Size:** 1092 bp

**OTI Disclaimer:** The molecular sequence of this clone aligns with the gene accession number as a point of reference only. However, individual transcript sequences of the same gene can differ through naturally occurring variations (e.g. polymorphisms), each with its own valid existence. This clone is substantially in agreement with the reference, but a complete review of all prevailing variants is recommended prior to use. [More info](#)

**OTI Annotation:** This clone was engineered to express the complete ORF with an expression tag. Expression varies depending on the nature of the gene.

**Components:** The ORF clone is ion-exchange column purified and shipped in a 2D barcoded Matrix tube containing 10ug of transfection-ready, dried plasmid DNA (reconstitute with 100 ul of water).

- Reconstitution Method:**
1. Centrifuge at 5,000xg for 5min.
  2. Carefully open the tube and add 100ul of sterile water to dissolve the DNA.
  3. Close the tube and incubate for 10 minutes at room temperature.
  4. Briefly vortex the tube and then do a quick spin (less than 5000xg) to concentrate the liquid at the bottom.
  5. Store the suspended plasmid at -20°C. The DNA is stable for at least one year from date of shipping when stored at -20°C.

**RefSeq:** [BC100428.1](#)

**RefSeq Size:** 1629 bp

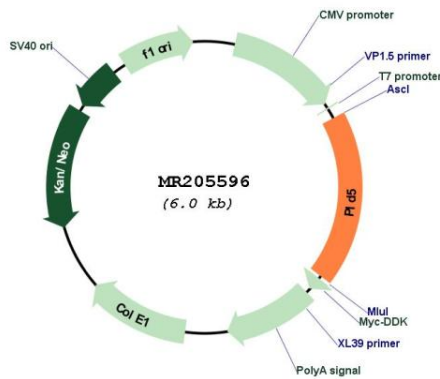
**RefSeq ORF:** 1094 bp

**Locus ID:** 319455

**Cytogenetics:** 1 H4

**MW:** 59.7 kDa

**Product images:**



Circular map for MR205596