

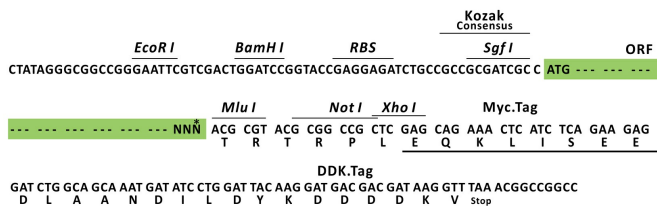
Product datasheet for MR205585L1

Aldob (NM_144903) Mouse Tagged Lenti ORF Clone

Product data:

Product Type:	Expression Plasmids
Product Name:	Aldob (NM_144903) Mouse Tagged Lenti ORF Clone
Tag:	Myc-DDK
Symbol:	Aldob
Synonyms:	Al; Ald; Aldo-2; Aldo2; BC016435
Mammalian Cell Selection:	None
Vector:	pLenti-C-Myc-DDK (PS100064)
E. coli Selection:	Chloramphenicol (34 ug/mL)
ORF Nucleotide Sequence:	The ORF insert of this clone is exactly the same as(MR205585).
Restriction Sites:	SgfI-MluI
Cloning Scheme:	

Cloning sites used for ORF Shuttling:



* The last codon before the Stop codon of the ORF.

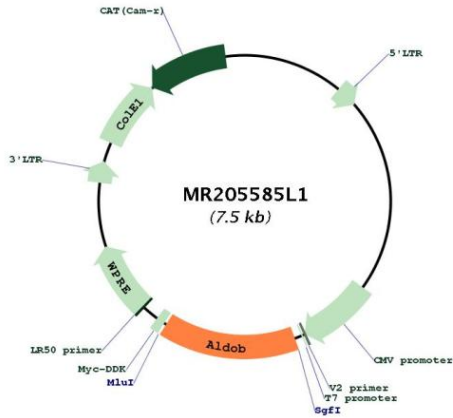
ACCN:	NM_144903
ORF Size:	1095 bp



[View online »](#)

OTI Disclaimer:	The molecular sequence of this clone aligns with the gene accession number as a point of reference only. However, individual transcript sequences of the same gene can differ through naturally occurring variations (e.g. polymorphisms), each with its own valid existence. This clone is substantially in agreement with the reference, but a complete review of all prevailing variants is recommended prior to use. More info
OTI Annotation:	This clone was engineered to express the complete ORF with an expression tag. Expression varies depending on the nature of the gene.
Components:	The ORF clone is ion-exchange column purified and shipped in a 2D barcoded Matrix tube containing 10ug of transfection-ready, dried plasmid DNA (reconstitute with 100 ul of water).
Reconstitution Method:	<ol style="list-style-type: none">1. Centrifuge at 5,000xg for 5min.2. Carefully open the tube and add 100ul of sterile water to dissolve the DNA.3. Close the tube and incubate for 10 minutes at room temperature.4. Briefly vortex the tube and then do a quick spin (less than 5000xg) to concentrate the liquid at the bottom.5. Store the suspended plasmid at -20°C. The DNA is stable for at least one year from date of shipping when stored at -20°C.
RefSeq:	NM_144903.2
RefSeq Size:	1993 bp
RefSeq ORF:	1095 bp
Locus ID:	230163
UniProt ID:	Q91Y97
Cytogenetics:	4 26.57 cM
Gene Summary:	This gene encodes a subunit of the homotetrameric enzyme aldolase B, an isozyme of the class I fructose 1,6-bisphosphate aldolase enzyme. This enzyme catalyzes the conversion of fructose 1,6-bisphosphate to dihydroxyacetone phosphate and glyceraldehyde 3-phosphate. Homozygous knockout mice for this gene exhibit liver damage and death following fructose ingestion. A pseudogene of this gene has been identified in the genome. [provided by RefSeq, Aug 2015]

Product images:



Circular map for MR205585L1