

## Product datasheet for MR205500

### Nipa2 (NM\_023647) Mouse Tagged ORF Clone

#### Product data:

Product Type:	Expression Plasmids
Product Name:	Nipa2 (NM_023647) Mouse Tagged ORF Clone
Tag:	Myc-DDK
Symbol:	Nipa2
Synonyms:	2600017P10Rik; 3830408P04Rik; AB041581
Mammalian Cell Selection:	Neomycin
Vector:	pCMV6-Entry (PS100001)
E. coli Selection:	Kanamycin (25 ug/mL)
ORF Nucleotide Sequence:	>MR205500 ORF sequence Red=Cloning site Blue=ORF Green=Tags(s)

TTTTGTAATACGACTCACTATAGGGCGGCCGGAATTCGTCGACTGGATCCGGTACCGAGGAGATCTGCC  
GCC**CGATCGCC**

ATGAGCCTGGGGCGTGGAAAATATGATTTTTATATTGGTCTGGGATTGGCTATGACCTCCAGCATTTTCA  
TTGGAGGGAGTTTCATTTTGAAAAAAGGCCTTCTGCGACTTGCCAGGAAAGGCTCAATGAGAGCAGG  
TCAAGGAGGCCATGCATATCTTAAGGAATGGTTGGTGGGCTGGACTGCTGTCAATGGGAGCCGGTGAA  
GTGGCCAATTTGCTGCATATGCATTTGCTCCGCCACATTAGTGACTCCACTAGGTGCGCTCAGCGTCC  
TCGTAAGTGCCATTCTGTCTTCATACTCCTAAATGAAAGACTTAATCTTCATGGGAAAATTGGGTGTTT  
GCTAAGTATTCTAGGGTCTACAGTTATGGTCATTCATGCTCCAAAGGAAGAGGAGATTGAGACCTTAAAT  
GAAATGTCACATAAGTTAGGTGATCCAGGTTTTGTGGTCTTTGCAACATTTGTGGTCATTGTGGCCTTGA  
TATTCATCTTTGTGGTGGGACCTCGACATGGACAGACAAACATTCCTGTGTATATAACAATCTGCTCTGT  
GATTGGAGCATTTTCAGTCTCCTGTGTGAAGGGTTTGGGTATCGCCATAAAAGAGTTGTTGGCTGGAAAAG  
CCTGTTCTGCAGCACCCCTCGCCTGGATTCTTCTGTTTAGCCTTGTGGTCTGTGTGAGCACACAGATTA  
ATTACCTAAACCGGGCTCTGGACATTTCAACACTTCCATTGTGACTCCAATATATTATGTGTTCTTTAC  
AACTTCAGTTTTGACTTGTTCAGCTATTCTTTTAAAGAATGGCAGGATATGCCTGTTGATGATGCATT  
GGGACTTTGAGTGGCTTCTTCACAATCATTGTGGGGATATTTTTGTTGCATGCCTTTAAAGATGTCAGTT  
TTAGTCTAGCAAGTCTGCCAGTATCTTTTCGAAAAGATGAAAAGCAATGAATGGCAATCTTTCTAGTAT  
GTATGAAGTTCTTAATAATAATGAAGACGACTTACCCTGTGGAATTGAACACACTGGTGAAAATATTTCC  
CGTAGGAATGAAATCTGCCATCTTTT

**ACGCGT**ACGCGGCCGCTCGAGCAGAAACTCATCTCAGAAGAGGATCTGGCAGCAATGATATCCTGGATT  
ACAAGGATGACGACGATAAGGTTTAA



[View online »](#)

**Protein Sequence:** >MR205500 protein sequence  
 Red=Cloning site Green=Tags(s)

MSLGRGKYDFYIGLGLAMTSSIFIGGSFILKKKGLRLARKGSMRAGQGGHAYLKEWLWWAGLLSMGAGE  
 VANFAAYAFAPATLVTPLGALSVLVSAILSSYFLNERLNLHGKIGCLLSILGSTVMVIHAPKEEEIETLN  
 EMSHKLGDPGFVVFATFVVIVALIFIFVVGPRHGQTNILVYITICSVIGAFSVSCVKGLGIAIKELLAGK  
 PVLQHPALWILLFSLVVCVSTQINYLNRALDIFNTSIVTPIYYVFFTTSVLTCSAILFKEWQDMPVDDVI  
 GTLSGFFTIIIVGIFLLHAFKDVFSLASLPVFSFRKDEKAMNGNLSMVEVLNNEDDLPCGIEHTGENIS  
 RRNGNLPSF

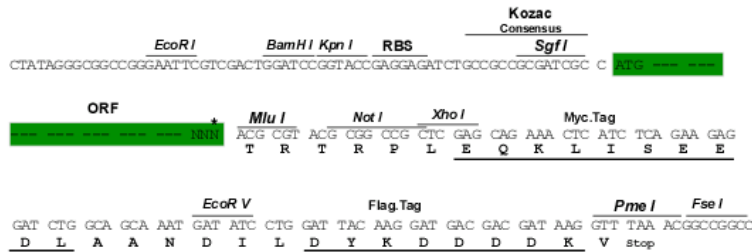
TRTRPLEQKLISEEDLAANDILDYKDDDDKV

**Restriction Sites:**

SgfI-MluI

**Cloning Scheme:**

Cloning sites used for ORF Shuttling:



\* The last codon before the Stop codon of the ORF

**ACCN:** NM\_023647

**ORF Size:** 1080 bp

**OTI Disclaimer:** The molecular sequence of this clone aligns with the gene accession number as a point of reference only. However, individual transcript sequences of the same gene can differ through naturally occurring variations (e.g. polymorphisms), each with its own valid existence. This clone is substantially in agreement with the reference, but a complete review of all prevailing variants is recommended prior to use. [More info](#)

**OTI Annotation:** This clone was engineered to express the complete ORF with an expression tag. Expression varies depending on the nature of the gene.

**Components:** The ORF clone is ion-exchange column purified and shipped in a 2D barcoded Matrix tube containing 10ug of transfection-ready, dried plasmid DNA (reconstitute with 100 ul of water).

**Reconstitution Method:**

1. Centrifuge at 5,000xg for 5min.
2. Carefully open the tube and add 100ul of sterile water to dissolve the DNA.
3. Close the tube and incubate for 10 minutes at room temperature.
4. Briefly vortex the tube and then do a quick spin (less than 5000xg) to concentrate the liquid at the bottom.
5. Store the suspended plasmid at -20°C. The DNA is stable for at least one year from date of shipping when stored at -20°C.

**RefSeq:** [NM\\_023647.6](#), [NP\\_076136.2](#)

**RefSeq Size:** 4023 bp

**RefSeq ORF:** 1080 bp

**Locus ID:** 93790

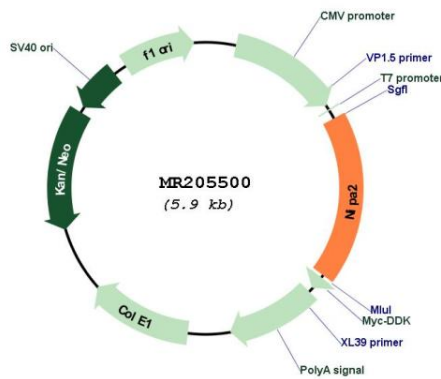
**UniProt ID:** [Q9JJC8](#)

**Cytogenetics:** 7 B5

**MW:** 39.1 kDa

**Gene Summary:** Acts as a selective Mg(2+) transporter.[UniProtKB/Swiss-Prot Function]

**Product images:**



Circular map for MR205500