

Product datasheet for **MR205495**

Gna11 (NM_010301) Mouse Tagged ORF Clone

Product data:

Product Type: Expression Plasmids
Product Name: Gna11 (NM_010301) Mouse Tagged ORF Clone
Tag: Myc-DDK
Symbol: Gna11
Synonyms: Dsk7; E430025L19
Mammalian Cell Selection: Neomycin
Vector: pCMV6-Entry (PS100001)
E. coli Selection: Kanamycin (25 ug/mL)
ORF Nucleotide Sequence: >MR205495 ORF sequence
Red=Cloning site Blue=ORF Green=Tags(s)

TTTTGTAAACGACTCACTATAGGGCGGCCGGGAATTCGTCGACTGGATCCGGTACCGAGGAGATCTGCC
GCC**CGATCGCC**

ATGACTCTGGAGAACTTGATGGCGTGTTGCCTGAGCGACGAGGTGAAGGAGTCGAAGCGCATCAACGCGG
AGATCGAGAAACAGCTGCGGCGGGACAAGCGCGACGCCCGCGCGAGCTCAAGCTGCTGCTACTTGGCAC
TGGCGAGAGCGGGAAGAGTACCTTCATCAAGCAGATGCGCATCATCCACGGGGCCGGCTACTCGGAGGAG
GACAAGCGCGGCTTACCAAGTTGGTGTACCAGAACATCTTTACCGCCATGCAGGCCATGGTGCAGGCCA
TGGCGACGCTCAAGATCCTCTACAAGTATGAGCAGAACAAGGCCAATGCACTCCTGATCCGGGAGGTCTGA
CTTGGAGAAGGTCAAACTTTTGGACACAGTATGTGAATGCCATCAAGACGCTGTGGAGTGACCCTGGT
GTCCAGGAGTGTTACGATCGCAGGCCTGAGTTCAGCTATCTGACTCGGCTAAGTACTACTTGGACGGACG
TGGACCGCATCGCCACAGTAGGCTACCTGCCACCCAGCAGGATGTGCTGCGGGTACGCGTGCCACCCAC
TGGCATCATCGAGTACCCGTTTACCTGGGAGAACATCATCTTCAGGATGGTGGATGTGGGCGGGCAGAGG
TCAGAGCGCAGGAAGTGGATCCATTGCTTTGAGAACGTGACTTCCATCATGTTCTTGGTGGCACTAAGCG
AGTATGACCAAGTCTGGTGGAGTCAGACAATGAGAACCAGTGGAGGAGAGCAAGGCCCTGTTCCGCAC
AATCATCACCTACCCCTGGTTCAGAACTCGTCTGTATTCTCTTCTCAACAAGAAGGACCTTCTAGAA
GACAAGATCCTGCACTCACACTTGGTGCATTACTCCCTGAGTTTGGTGGCCACAGAGGGATGACACAGG
CCGACCGGAGTTTATTCTGAAGATGTTTGTGGACCTGAACCCTGACAGCGACAAAATCATCTACTCCCA
CTTACAGTGTGCCACCGACACCGAGAACATCCGCTTTGTGTTCCGAGCTGTGAAGGACACCATCCTGCAG
CTGAACCTGAAGGAGTACAACCTGGTG

AG**CGGACCG**ACGCGTACGCGGCCGCTCGAGCAGAACTCATCTCAGAAGAGGATCTGGCAGCAAATGATATCC
TGGATTACAAGGATGACGACGATAAGGTTTAA



[View online »](#)

Protein Sequence: >MR205495 protein sequence
Red=Cloning site Green=Tags(s)

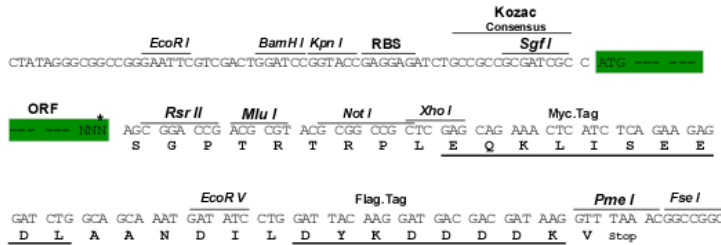
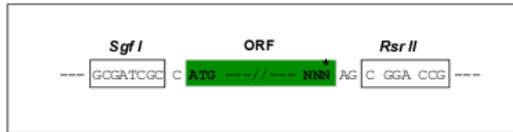
MTLENLMACCLSDEVKESKRINAEIEKQLRRDKRDARRELKLLLLGTGESGKSTFIKQMRIIHGAGYSEE
DKRGFTKL VYQNI FTAMQAMVRAMATLKILYKYEQNKANALLIREVDLEKVTTFEHQYVNAIKTLWSDPG
VQECYDRRPEFQLSDSAKYLLTDVDRIATVGYLPTQDVL RVRVPTTGIIEYPFDL ENIIFRMVDVGGQR
SERRKWIHC FENVTSIMFLVALSEYDQVLVESDNENRMEESKALFRTIITYPWFQNSSVILFLNKKDLLE
DKILHSHLV DYPPEFDGPQRDAQAAREF ILKMFVDLNPDSKIIYSHFTCATDTENIRFVFAAVKDTILQ
LNLKEYNLV

SGPTRTRPLEQKLI SEEDLAANDILDYKDDDDKV

Restriction Sites: SgfI-RsrII

Cloning Scheme:

Cloning sites used for ORF Shutting:



* The last codon before the Stop codon of the ORF

ACCN: NM_010301

ORF Size: 1080 bp

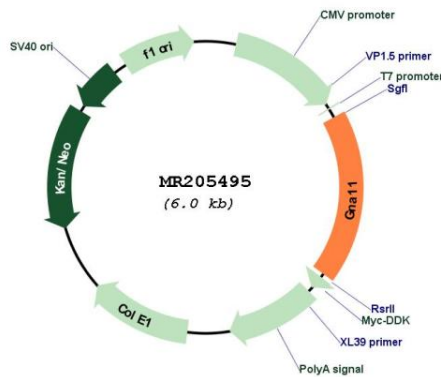
OTI Disclaimer: Due to the inherent nature of this plasmid, standard methods to replicate additional amounts of DNA in E. coli are highly likely to result in mutations and/or rearrangements. Therefore, OriGene does not guarantee the capability to replicate this plasmid DNA. Additional amounts of DNA can be purchased from OriGene with batch-specific, full-sequence verification at a reduced cost. Please contact our customer care team at custsupport@origene.com or by calling 301.340.3188 option 3 for pricing and delivery.

The molecular sequence of this clone aligns with the gene accession number as a point of reference only. However, individual transcript sequences of the same gene can differ through naturally occurring variations (e.g. polymorphisms), each with its own valid existence. This clone is substantially in agreement with the reference, but a complete review of all prevailing variants is recommended prior to use. [More info](#)

OTI Annotation: This clone was engineered to express the complete ORF with an expression tag. Expression varies depending on the nature of the gene.

Components:	The ORF clone is ion-exchange column purified and shipped in a 2D barcoded Matrix tube containing 10ug of transfection-ready, dried plasmid DNA (reconstitute with 100 ul of water).
Reconstitution Method:	<ol style="list-style-type: none"> 1. Centrifuge at 5,000xg for 5min. 2. Carefully open the tube and add 100ul of sterile water to dissolve the DNA. 3. Close the tube and incubate for 10 minutes at room temperature. 4. Briefly vortex the tube and then do a quick spin (less than 5000xg) to concentrate the liquid at the bottom. 5. Store the suspended plasmid at -20°C. The DNA is stable for at least one year from date of shipping when stored at -20°C.
RefSeq:	<u>NM_010301.1</u> , <u>NM_010301.2</u> , <u>NM_010301.3</u> , <u>NP_034431.1</u>
RefSeq Size:	3262 bp
RefSeq ORF:	1080 bp
Locus ID:	14672
UniProt ID:	<u>P21278</u>
Cytogenetics:	10 39.72 cM
MW:	41.9 kDa
Gene Summary:	Guanine nucleotide-binding proteins (G proteins) are involved as modulators or transducers in various transmembrane signaling systems. Acts as an activator of phospholipase C. [UniProtKB/Swiss-Prot Function]

Product images:



Circular map for MR205495