

## Product datasheet for MR205418

### Bag1 (NM\_001171739) Mouse Tagged ORF Clone

#### Product data:

**Product Type:** Expression Plasmids  
**Product Name:** Bag1 (NM\_001171739) Mouse Tagged ORF Clone  
**Tag:** Myc-DDK  
**Symbol:** Bag1  
**Synonyms:** BAG-1; Ra; Rap46  
**Mammalian Cell Selection:** Neomycin  
**Vector:** pCMV6-Entry (PS100001)  
**E. coli Selection:** Kanamycin (25 ug/mL)  
**ORF Nucleotide Sequence:** >MR205418 representing NM\_001171739  
 Red=Cloning site Blue=ORF Green=Tags(s)

TTTTGTAATACGACTCACTATAGGGCGGCCGGAATTCGTCGACTGGATCCGGTACCGAGGAGATCTGCC  
 GCC**CGGATCGCC**

CTGGCGGGTTCGACGCGCCGCGGGCGACCGGAGCGACCGGGAGCCGCTGGGACCCAGGCTGCGCGCC  
 CTCGGCCTGCCCGGGAGCCGCGCCAGTCGGAGTCCCGGGCCGAGCGGGGCTTGCCCTCTCAGCGTTC  
 CTCTGTGCGCAGTGCAGCCAGCGGGCATGACCGATCCACCAGGGCGCCGCCCGCGCCTGCAAGCCG  
 CGGTGAAGAAGAAAGTCCGGCCCCGCTTCTCAGAGCGAGAAGGTAGGGAGCAGCAGCGGAATTGA  
 CTAGAAGTAAGAAAGTGACCCGTAGCAAGAACGTACCGGGACCCAGGTAGAGGAGGTACCAAGATCGA  
 GGAGGCGACCCAAACCGAGGAAGTAACTGTGGCAGAAGAGGTGACCCAGACCGACAACATGGCCAAGACC  
 GAGGAGATGGTCCAGACGGAGAAATGGAACACCCAGACTCAGCGTGATCGTCACCCACAGCAATGAGA  
 GGTATGACCTTCTTGTTACCCACAGCAAGGTAACAGTGAGCCAGTTGTCCAAGACTTGGCTCAGCTTGT  
 TGAAGAGGCCACAGGAGTTCCACTACCTTTTCAGAAGCTCATATTTAAGGGAAAACTCTGAAAGAAATG  
 GAAACACCGTTGTCAGCACTTGGAAATGCAAAATGGTTGCCGAGTCATGTTAATTGGTGAAAAGAGCAATC  
 CAGAAGAAGAGGTTGAGTTAAAGAAGCTGAAAGATTTGGAGGTATCTGCAGAGAAGATAGCTAACCACCT  
 GCAAGAATTGAATAAAGAGCTTTCTGGCATCCAGCAGGGTTTTCTGGCTAAGGAATTGCAAGCGGAGGCT  
 CTCTGCAAACTTGATAGGAAAGTAAAAGCAACAATTGAGCAATTCATGAAGATCTTGAGGAGATTGACA  
 CAATGGTCTACCAACAATTTAAAGACAGCAGGCTAAAAAGGAAGAATTTGGTGAAAAAGGTTTCAGGT  
 GTTCTTAGCAGAGTGTGACACAGTGAGCAATACATCTGCCAAGAGACAGAGCGGCTGCAGTCTACAAAC  
 TTGGCCCTGGCTGAA

**ACGCGT**ACGCGGCCGCTCGAGCAGAACTCATCTCAGAAGAGGATCTGGCAGCAATGATATCCTGGATT  
 ACAAGGATGACGACGATAAGGTTAA



[View online »](#)

**Protein Sequence:** >MR205418 representing NM\_001171739  
 Red=Cloning site Green=Tags(s)

LAGRSAARRPRGDREPLGPRLRAPRPAREPRQSESRAERGLPPSQRSSVRSAAASGHRSTRGAAAGACKP  
 RVKKKVRPRSSQSEKVGSSSRELTRSKKVTRSKNVTGTQVEEVTKIEEATQTEEVTVAAEVTQTDNMAKT  
 EEMVQTEEMETPRLSVIVTHSNERYDLLVTPQQGNSEPVVQDLAQLVEEATGVPLPFQKLIFFKGLSKEM  
 ETPLSALGMQNGCRVMLIGEKSNPEEEEVELKCLKDLEVS AEKIANHLQELNKELSGIQQGF LAKELQAEA  
 LCKLDRKVKATIEQFMKILEEIDTMVLP EQFKDSRLKRKNLVKKVQVFLAECDTVEQYICQETERLQSTN  
 LALAE

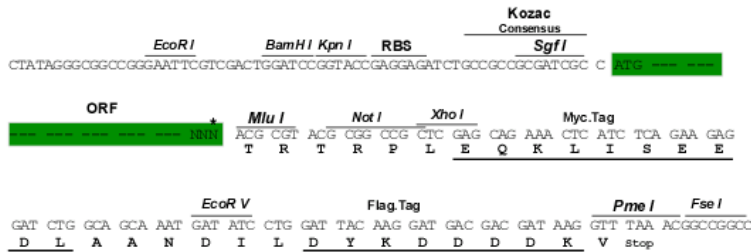
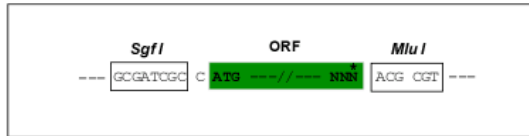
TRTRPLEQKLISEEDLAANDILDYKDDDDKV

**Restriction Sites:**

SgfI-MluI

**Cloning Scheme:**

Cloning sites used for ORF Shuttling:



\* The last codon before the Stop codon of the ORF

**ACCN:** NM\_001171739

**ORF Size:** 1065 bp

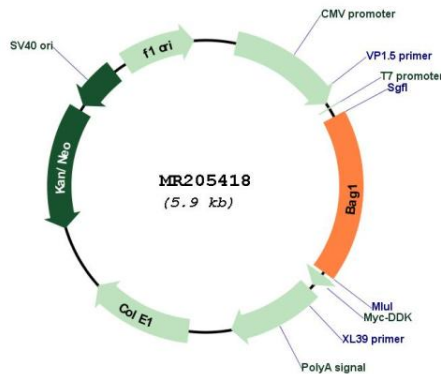
**OTI Disclaimer:** Due to the inherent nature of this plasmid, standard methods to replicate additional amounts of DNA in E. coli are highly likely to result in mutations and/or rearrangements. Therefore, OriGene does not guarantee the capability to replicate this plasmid DNA. Additional amounts of DNA can be purchased from OriGene with batch-specific, full-sequence verification at a reduced cost. Please contact our customer care team at [custsupport@origene.com](mailto:custsupport@origene.com) or by calling 301.340.3188 option 3 for pricing and delivery.

The molecular sequence of this clone aligns with the gene accession number as a point of reference only. However, individual transcript sequences of the same gene can differ through naturally occurring variations (e.g. polymorphisms), each with its own valid existence. This clone is substantially in agreement with the reference, but a complete review of all prevailing variants is recommended prior to use. [More info](#)

**OTI Annotation:** This clone was engineered to express the complete ORF with an expression tag. Expression varies depending on the nature of the gene.

- Components:** The ORF clone is ion-exchange column purified and shipped in a 2D barcoded Matrix tube containing 10ug of transfection-ready, dried plasmid DNA (reconstitute with 100 ul of water).
- Reconstitution Method:**
1. Centrifuge at 5,000xg for 5min.
  2. Carefully open the tube and add 100ul of sterile water to dissolve the DNA.
  3. Close the tube and incubate for 10 minutes at room temperature.
  4. Briefly vortex the tube and then do a quick spin (less than 5000xg) to concentrate the liquid at the bottom.
  5. Store the suspended plasmid at -20°C. The DNA is stable for at least one year from date of shipping when stored at -20°C.
- RefSeq Size:** 1365 bp
- RefSeq ORF:** 660 bp
- Locus ID:** 12017
- UniProt ID:** [Q60739](#)
- Cytogenetics:** 4 A5
- MW:** 25.3 kDa
- Gene Summary:** The oncogene Bcl2 encodes a membrane protein that blocks a step in a pathway leading to apoptosis or programmed cell death. The protein encoded by this gene binds to Bcl2 protein and is referred to as Bcl2-associated athanogene. It enhances the anti-apoptotic effects of Bcl2 and represents a link between growth factor receptors and anti-apoptotic mechanisms. At least two protein isoforms are encoded by this mRNA through the use of a non-AUG (CUG) start site and an alternative, downstream, AUG translation initiation site. [provided by RefSeq, Jul 2008]

**Product images:**



Circular map for MR205418