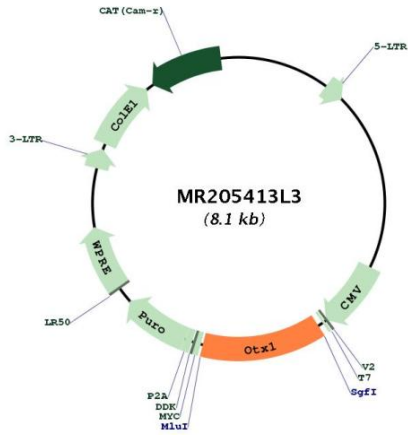


OTI Disclaimer:	The molecular sequence of this clone aligns with the gene accession number as a point of reference only. However, individual transcript sequences of the same gene can differ through naturally occurring variations (e.g. polymorphisms), each with its own valid existence. This clone is substantially in agreement with the reference, but a complete review of all prevailing variants is recommended prior to use. More info
OTI Annotation:	This clone was engineered to express the complete ORF with an expression tag. Expression varies depending on the nature of the gene.
Components:	The ORF clone is ion-exchange column purified and shipped in a 2D barcoded Matrix tube containing 10ug of transfection-ready, dried plasmid DNA (reconstitute with 100 ul of water).
Reconstitution Method:	<ol style="list-style-type: none">1. Centrifuge at 5,000xg for 5min.2. Carefully open the tube and add 100ul of sterile water to dissolve the DNA.3. Close the tube and incubate for 10 minutes at room temperature.4. Briefly vortex the tube and then do a quick spin (less than 5000xg) to concentrate the liquid at the bottom.5. Store the suspended plasmid at -20°C. The DNA is stable for at least one year from date of shipping when stored at -20°C.
RefSeq:	NM_011023.3 , NP_035153.1
RefSeq Size:	2842 bp
RefSeq ORF:	1068 bp
Locus ID:	18423
UniProt ID:	P80205
Cytogenetics:	11 14.1 cM
Gene Summary:	This gene encodes a member of the bicoid subfamily of the paired homeobox transcription factor family. The encoded protein is critical to the maintenance and regionalization of the forebrain and midbrain during development. It may also have important functions in sense organ development, pituitary function, and in the regulation of blood cell production. [provided by RefSeq, Jul 2008]

Product images:



Circular map for MR205413L3