

Product datasheet for MR205332

Rom1 (NM_009073) Mouse Tagged ORF Clone

Product data:

Product Type: Expression Plasmids
Product Name: Rom1 (NM_009073) Mouse Tagged ORF Clone
Tag: Myc-DDK
Symbol: Rom1
Synonyms: M101156; Rgsc1156; Rom-1; Rosp1; Tspan23
Mammalian Cell Selection: Neomycin
Vector: pCMV6-Entry (PS100001)
E. coli Selection: Kanamycin (25 ug/mL)
ORF Nucleotide Sequence: >MR205332 ORF sequence
Red=Cloning site Blue=ORF Green=Tags(s)

TTTTGTAATACGACTCACTATAGGGCGGCCGGAATTCGTCGACTGGATCCGGTACCGAGGAGATCTGCC
GCC**CGCATCGCC**

ATGGCGCCGGTGTGCCCGTGGTGTGCCCTCCAACCCCGTATCCGTTTGGCACAGGGCATCTGGCTCC
TCTCCTGGCTGTGGCATTGGTCGGTGGCTCACCTCCTTTGTAGCGGGCACCTTCTGGTACAGCTGGG
GCACCTTGGCACCTTCTGGCACCTCTTGTTTCATTCCTGCTCTGCCCCAGACTGCCCTGGCAGCGGGA
ACGGTGGCTCTAGGCACAGGGCTAGGAGGCGCAGGAGCCAGCCGGCAAGTCTGGATGCAGCTCAATACC
CCCCCTGGAGAGGGGTCTTGACTCCACTGCTAGCGTTGGCACAGCTGCAGGTGGGGGGTCTGACCCCT
TGCCCTGGGGCTAGCCCTGGCTTTGCCAGTAAGTCTCAACCAGGGACTGGAGGAGGGCTGGAGGCTGCC
TTGGCTCACTACAAGGACACAGAGGTGCCGACGCTGTCAAGCCAAACGCTGTGATGGATGAGTTGCAGT
TGAGGTACCATTGCTGCGGGCGCCATGGCTACAAGGATTGGTTTGGTGTTCAGTGGGTGACGAACCGTTA
CTTGGACCCAGTGACCAAGATGTAGTTGACCGGATCCAGAGCAATGTGGAAGGCTTATATCTGATTGAT
GGCGTCCCCTTCTCCTGTTGTAATCCCCACTCACCCGGCCTTGCTGCAAAGCCAACCTCTCGGACCCCT
ATGCCATCCACTCTTCGATCCTCGGCAGCCAACTAAACCTCTGGGCCAAGGGTCCATGAAGTGTCT
GCTGGAACACCTGCAGGGTTTATCAGGCACACTGGGAAGTATTCTGGCTGTCACCTATTGCTGCAGATT
CTAGTCTCCTTGGTTTGGCGTATTTGCAGACAGCGCTGGAGGGCCTTGGAGGATCATTGATGGGGAAG
GAGAGGCCCAGGGCTATCTTTTCTGGTGGGCTGAAAGACATACTGAAAAGTGCATGGCTACAGGGAGG
GCTTGCCACAAGCCAGCACCTGAGGAGGCCCCACCAGATGAAGAACCTCCAAGGAAGTTCTAGCTGAG
GCC

ACGCGTACGCGGCCGCTCGAGCAGAACTCATCTCAGAAGAGGATCTGGCAGCAATGATATCCTGGATT
ACAAGGATGACGACGATAAGGTTTAA



[View online »](#)

Protein Sequence: >MR205332 protein sequence
Red=Cloning site Green=Tags(s)

```
MAPVLPVVLPLQPRIRLAQGIWLLSWLLALVGGLTLLCSGHLLVQLGHLGTFAPSCSFPALPQTALAAG
TVALGTGLGGAGASRASLDAAQYPPWRGVLTPLLAVGTAAGGGLLTLALGLALALPVSLNQGLEEGLEAA
LAHYKDTEVPGRCQAKRLMDELQLRYHCCGRHGKYKDFGVQWVSNRYLDPDSDQDVVDRIQSNVEGLYLID
GVPFSCCNPHSPRPCLQSQLSDPYAHPLFDPRQPNLNLWAQGCHEVLEHLQGLSGTLGSLAVTLLLQI
LVLLGLRYLQTALEGLGGVIDGEGEAQGYLFPGLKDKILKTAWLQGGLAHKPAPEEAPPDEEPPKEVLAE
A
```

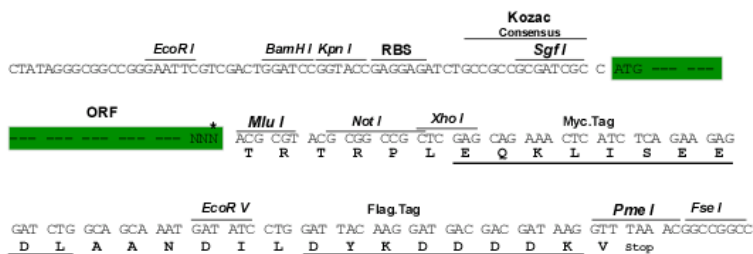
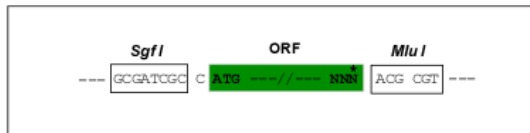
TRTRPLEQKLISEEDLAANDILDYKDDDDKV

Restriction Sites:

SgfI-MluI

Cloning Scheme:

Cloning sites used for ORF Shuttling:



* The last codon before the Stop codon of the ORF

ACCN: NM_009073

ORF Size: 1056 bp

OTI Disclaimer: The molecular sequence of this clone aligns with the gene accession number as a point of reference only. However, individual transcript sequences of the same gene can differ through naturally occurring variations (e.g. polymorphisms), each with its own valid existence. This clone is substantially in agreement with the reference, but a complete review of all prevailing variants is recommended prior to use. [More info](#)

OTI Annotation: This clone was engineered to express the complete ORF with an expression tag. Expression varies depending on the nature of the gene.

Components: The ORF clone is ion-exchange column purified and shipped in a 2D barcoded Matrix tube containing 10ug of transfection-ready, dried plasmid DNA (reconstitute with 100 ul of water).

Reconstitution Method:

1. Centrifuge at 5,000xg for 5min.
2. Carefully open the tube and add 100ul of sterile water to dissolve the DNA.
3. Close the tube and incubate for 10 minutes at room temperature.
4. Briefly vortex the tube and then do a quick spin (less than 5000xg) to concentrate the liquid at the bottom.
5. Store the suspended plasmid at -20°C. The DNA is stable for at least one year from date of shipping when stored at -20°C.

RefSeq: [NM_009073.4](#)

RefSeq Size: 1526 bp

RefSeq ORF: 1056 bp

Locus ID: 19881

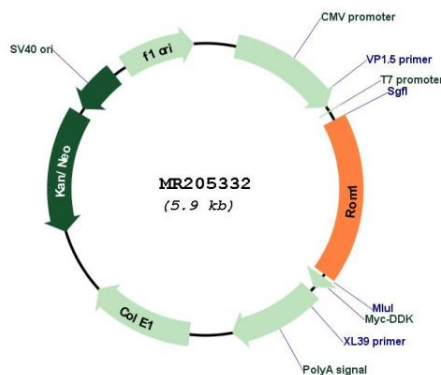
UniProt ID: [P32958](#)

Cytogenetics: 19 6.03 cM

MW: 37.3 kDa

Gene Summary: May function as an adhesion molecule involved in stabilization and compaction of outer segment disks or in the maintenance of the curvature of the rim. It is essential for disk morphogenesis.[UniProtKB/Swiss-Prot Function]

Product images:



Circular map for MR205332