

## Product datasheet for MR205323

### Gabpa (BC013562) Mouse Tagged ORF Clone

#### Product data:

|                          |  |
|--------------------------|--|
| Product Type:            | Expression Plasmids  |
| Product Name:            | Gabpa (BC013562) Mouse Tagged ORF Clone                                    |
| Tag:                     | Myc-DDK  |
| Symbol:                  | Gabpa  |
| Synonyms:                | GABPalpha  |
| Vector:                  | pCMV6-Entry (PS100001)   |
| E. coli Selection:       | Kanamycin (25 ug/mL)   |
| Cell Selection:          | Neomycin   |
| ORF Nucleotide Sequence: | >MR205323 representing BC013562<br>Red=Cloning site Blue=ORF Green=Tags(s) |

TTTTGTAATACGACTCACTATAGGGCGGCCGGAATTCGTCGACTGGATCCGGTACCGAGGAGATCTGCC  
GCC**GCGATCGCC**

ATGGAGCCAAAGTTGAACATTCTTGAATTGTTAAGACTGCGGAAACGGTCGAGGTGGTCATCGATCCAG  
ATGCCACCACGCGGAAGCAGAAGCGCATCTCGTTGAAGAAGCTCAAGTGATAACTCTTGACGGCACCA  
GCACATTACGACCATTTAGACGAGACCTCGGAGCAGGTGACGAGATGGGCTGCTGCACTGGAAGGCTAC  
AGAAAAGAGCAGGAGCGCCTTGGCATCCCTATGATCCTATACACTGGTCCACGGACCAAGTCTGCATT  
GGTGGTTTTGGTAATGAAGGAGTTCAGCATGACTGATATAGACCTCACCACACTCAACATTTCCGGGAAG  
AGAATTATGTAGTCTCAACCAAGAAGATTTTTTTCAGCGGGTCCCTCGGGGAGAAATCTTTGGAGTCAT  
CTGGAGCTTCTTCGAAAATATGTTTTGGCCAGCCAAGAGCAACAGATGAATGAGATAGTTACCATTGACC  
AGCCTGTGCAGATTATCCAGCCTCAGTGCCTCCCGCTACACCGACTACGATTAAGTTATAAACAGCAG  
TGCAAAAGCAGCTAAAGTGCAACGGTCCCAAGGATTTTCAGGAGAAGACAGAAGTTCACCGGGGAACAGA  
ACAGGAAACAATGGTCAGATCCAACATGTCAGTGTGTTTGGTGAAGTTAAGCTAAATCAGCCTGAGTTGGTGGC  
ACTGTATTTCTGGGTTGGTGATGAAGGTGAATTAAGCTAAATCAGCCTGAGTTGGTGGCAGGAAATG  
GGGACAACGTAAGAACAAGCCTACCATGAACTATGAGAACTTAGCCGTGATTACGGTATTATTATGAT  
GGGACATGATTTGTAAGTTCAAGGCAAGAGATTTGTGTACAAATTTGTTGTGACTTGAAGACTCTAA  
TTGGATACAGTGCAGCAGAACTGAACCGTCTGGTCATAGAGTGTGAACAGAAAGAACTGGCAGGATGCA  
GCTGCATGGGATTGCCAGCCAGTCACGGCAGTAGCACTGGCAGCCACCTCTCTACAGGCAGACAAAGAG  
ATT

**ACGCGT**ACGCGGCCGCTCGAGCAGAACTCATCTCAGAAGAGGATCTGGCAGCAATGATATCCTGGATT  
ACAAGGATGACGACGATAAGGTTTAA



[View online »](#)

**Protein Sequence:** >MR205323 representing BC013562  
 Red=Cloning site Green=Tags(s)

MEPKLNILEIVKTAETVEVVIDPDAAHAEAEHLVEEAQVITLDGKTHITTSDETSEQVTRWAAALEGY  
 RKEQERLGIPYDPIHWSTDQVLHWVWVMKEFSMTDIDL TTLNISGRELCSLNQEDFFQRVPRGEILWSH  
 LELLRKYVLASQEQQMNEIVTIDQPVQIIPASVPPATPTTIKVINSSAKAAKVQRSPRISGEDRSSPGNR  
 TGNNQIQLWQFLLELLTDKDARDCISWVGDEGEFKNQPELVAQKWGQRKNKPTMNYEKLSRALRYYYD  
 GDMICKVQGKRFFYKFCVLDLTLIGYSAEELNRLVIECEQKKLARMQLHGIAQPVTAVALAATSLQADKE  
 I

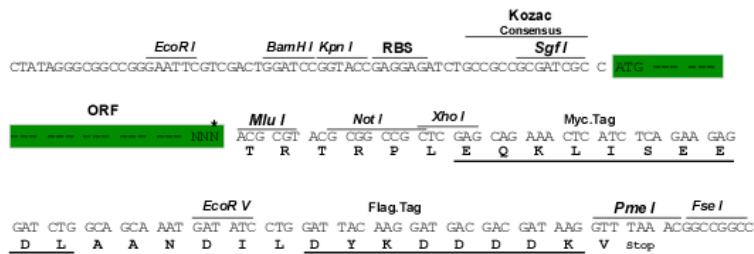
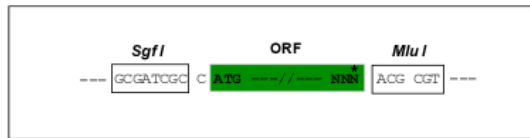
TRTRPLEQKLISEEDLAANDILDYKDDDDKV

**Restriction Sites:**

Sgfl-MluI

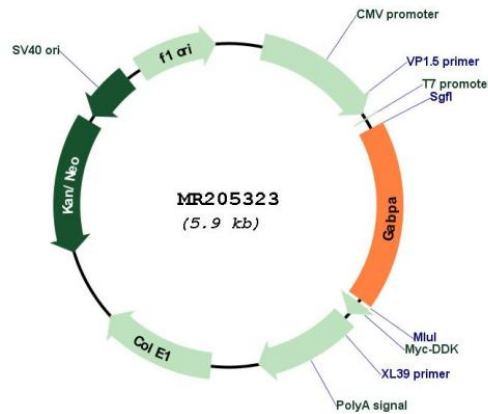
**Cloning Scheme:**

Cloning sites used for ORF Shuttling:



\* The last codon before the Stop codon of the ORF

**Plasmid Map:**



**ACCN:** BC013562

|                               |   |
|-------------------------------|---|
| <b>ORF Size:</b>              | 1053 bp   |
| <b>OTI Disclaimer:</b>        | The molecular sequence of this clone aligns with the gene accession number as a point of reference only. However, individual transcript sequences of the same gene can differ through naturally occurring variations (e.g. polymorphisms), each with its own valid existence. This clone is substantially in agreement with the reference, but a complete review of all prevailing variants is recommended prior to use. <a href="#">More info</a>  |
| <b>OTI Annotation:</b>        | This clone was engineered to express the complete ORF with an expression tag. Expression varies depending on the nature of the gene.  |
| <b>Components:</b>            | The ORF clone is ion-exchange column purified and shipped in a 2D barcoded Matrix tube containing 10ug of transfection-ready, dried plasmid DNA (reconstitute with 100 ul of water).  |
| <b>Reconstitution Method:</b> | <ol style="list-style-type: none"><li>1. Centrifuge at 5,000xg for 5min.</li><li>2. Carefully open the tube and add 100ul of sterile water to dissolve the DNA.</li><li>3. Close the tube and incubate for 10 minutes at room temperature.</li><li>4. Briefly vortex the tube and then do a quick spin (less than 5000xg) to concentrate the liquid at the bottom.</li><li>5. Store the suspended plasmid at -20°C. The DNA is stable for at least one year from date of shipping when stored at -20°C.</li></ol> |
| <b>RefSeq:</b>                | <a href="#">BC013562.1</a>  |
| <b>RefSeq Size:</b>           | 4266 bp   |
| <b>RefSeq ORF:</b>            | 1055 bp   |
| <b>Locus ID:</b>              | 14390   |
| <b>Cytogenetics:</b>          | 16 46.92 cM   |
| <b>MW:</b>                    | 156.4 kDa   |
| <b>Gene Summary:</b>          | Transcription factor capable of interacting with purine rich repeats (GA repeats).<br>[UniProtKB/Swiss-Prot Function]   |