

Product datasheet for MR205177

Cd2 (NM_013486) Mouse Tagged ORF Clone

Product data:

Product Type:	Expression Plasmids
Product Name:	Cd2 (NM_013486) Mouse Tagged ORF Clone
Tag:	Myc-DDK
Symbol:	Cd2
Synonyms:	LFA-2; Ly-37; Ly37
Mammalian Cell Selection:	Neomycin
Vector:	pCMV6-Entry (PS100001)
E. coli Selection:	Kanamycin (25 ug/mL)
ORF Nucleotide Sequence:	>MR205177 representing NM_013486 Red=Cloning site Blue=ORF Green=Tags(s)

TTTTGTAATACGACTCACTATAGGGCGGCCGGAATTCGTCGACTGGATCCGGTACCGAGGAGATCTGCC
GCC**CGATCGCC**

ATGAAATGTAATTCCTGGGTAGCTTCTTTCTGCTCTTCAGCCTTCCGGCAAAGGGGGGACTGCAGAG
ACAATGAGACCATCTGGGGTGTCTTGGGTCATGGCATCACCTGAACATCCCAACTTTCAAATGACTGA
TGATATTGATGAGGTGCGATGGGTAAGGAGGGGCACCCTGGTCGAGAGTTTAAAGGAAGAAGCCACCT
TTTTTGATATCAGAAACGTATGAGGTCTTAGCAAACGGATCCCTGAAGATAAAGAAGCCGATGATGAGAA
ACGACAGTGGCACCTATAATGTAATGGTGTATGGCACAATGGGATGACTAGGCTGGAGAAGGACCTGGA
CGTGAGGATTCTGGAGAGGGTCTCAAAGCCATGATCCACTGGGAATGCCCAACAACCCCTGACCTGT
GCGGTCTTGCAAGGGACAGATTTGAACTGAAGCTGTATCAAGGGGAAACACTACTCAATAGTCTCCCCC
AGAAGAACATGAGTTACCAGTGGACCACTGAACGCACCATTCAAGTGTGAGGCGATAAACCCGGTCAG
CAAGGAGTCTAAGATGGAAGTTGTTAACTGTCCAGAGAAAGGTCTGTCTTCTATGTACAGTGGGGGTC
GGTGCAGGAGGACTCCTCTTGGTGTCTTGGTGGCGCTTTTTATTTCTGTATCTGCAAGAGGAGAAAAC
GGAACAGGAGGAGAAAAGATGAAGAGCTGGAATAAAAGCTTCCAGAACAAGCACTGTGGAAGGGGGCC
CAAGCCGCACTCAACCCAGCCGAGCAGCGCAGAATTCAGTGGCGCTCCAAGCTCCTCCTCCACCTGGC
CATCACCTCCAGACACCTGGCCATCGTCCCTTGCTCCAGGCCACCGTACCCGTGAGCACCAGCAGAAGA
AGAGACCTCCTCCATCAGGCACACAGATTCAACAGCAGAAAGGCCCTCCTTTACCCAGACCCCGAGTTCA
GCCAAAACCTCCTGTGGGAGTGGAGATGGTGTTCCTGCGCCCCCTAAT

ACGCGTACGCGGCCGCTCGAGCAGAACTCATCTCAGAAGAGGATCTGGCAGCAAATGATATCCTGGATT
ACAAGGATGACGACGATAAGGTTTAA



[View online »](#)

Protein Sequence: >MR205177 representing NM_013486
Red=Cloning site Green=Tags(s)

MKCKFLGSFFLLFSLSGKGADCRDNETIWGVLGHGITLNIPIPNFQMTDDIDEVRWVRRGTLVAEFKRKKPP
 FLISETYEVLANGSLKIKKPMRNDSTYNYVMVYGTNGMTRLEKDLVDVILERVSKPMIHWECNPTTLTC
 AVLQGTDFELKLYQGETLLNSLPQKNMSYQWTNLNAPFKCEAINPVSKEKMEVNVNCPKGLSFYVTVGV
 GAGGLLLVLLVALFIFCICKRRKRNRRRKDEELEIKASRTSTVERGPKPHSTPAAAAQNSVALQAPPPPG
 HHLQTPGHRPLPPGHRTRHQKKRPPPSGTQIHQQKGPPLPRPRVQPKPPCGSGDGVSLPPPN

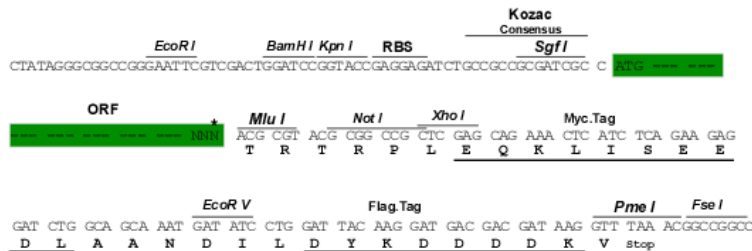
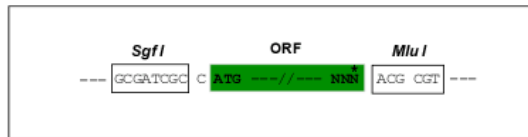
TRTRPLEQKLISEEDLAANDILDYKDDDDKV

Chromatograms: https://cdn.origene.com/chromatograms/mm9020_a11.zip

Restriction Sites: SgfI-MluI

Cloning Scheme:

Cloning sites used for ORF Shutting:



* The last codon before the Stop codon of the ORF

ACCN: NM_013486

ORF Size: 1032 bp

OTI Disclaimer: The molecular sequence of this clone aligns with the gene accession number as a point of reference only. However, individual transcript sequences of the same gene can differ through naturally occurring variations (e.g. polymorphisms), each with its own valid existence. This clone is substantially in agreement with the reference, but a complete review of all prevailing variants is recommended prior to use. [More info](#)

OTI Annotation: This clone was engineered to express the complete ORF with an expression tag. Expression varies depending on the nature of the gene.

Components: The ORF clone is ion-exchange column purified and shipped in a 2D barcoded Matrix tube containing 10ug of transfection-ready, dried plasmid DNA (reconstitute with 100 ul of water).

Reconstitution Method:

1. Centrifuge at 5,000xg for 5min.
2. Carefully open the tube and add 100ul of sterile water to dissolve the DNA.
3. Close the tube and incubate for 10 minutes at room temperature.
4. Briefly vortex the tube and then do a quick spin (less than 5000xg) to concentrate the liquid at the bottom.
5. Store the suspended plasmid at -20°C. The DNA is stable for at least one year from date of shipping when stored at -20°C.

RefSeq: [NM_013486.2](#), [NP_038514.1](#)

RefSeq Size: 1144 bp

RefSeq ORF: 1035 bp

Locus ID: 12481

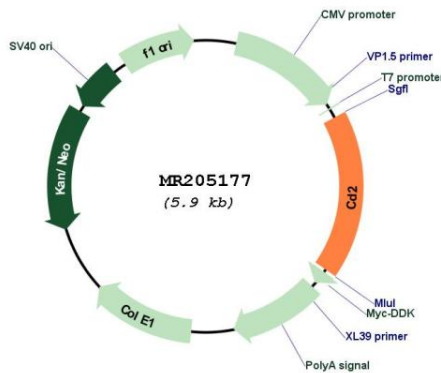
UniProt ID: [P08920](#)

Cytogenetics: 3 44.17 cM

MW: 38.9 kDa

Gene Summary: CD2 interacts with lymphocyte function-associated antigen CD58 (LFA-3) and CD48/BCM1 to mediate adhesion between T-cells and other cell types. CD2 is implicated in the triggering of T-cells, the cytoplasmic domain is implicated in the signaling function.[UniProtKB/Swiss-Prot Function]

Product images:



Circular map for MR205177