

## Product datasheet for MR205172

### Lpar6 (NM\_175116) Mouse Tagged ORF Clone

#### Product data:

Product Type:	Expression Plasmids
Product Name:	Lpar6 (NM_175116) Mouse Tagged ORF Clone
Tag:	Myc-DDK
Symbol:	Lpar6
Synonyms:	2610302I02Rik; P2ry5; P2y5
Mammalian Cell Selection:	Neomycin
Vector:	pCMV6-Entry (PS100001)
E. coli Selection:	Kanamycin (25 ug/mL)
ORF Nucleotide Sequence:	>MR205172 ORF sequence Red=Cloning site Blue=ORF Green=Tags(s)

TTTTGTAATACGACTCACTATAGGGCGGCCGGAATTCGTCGACTGGATCCGGTACCGAGGAGATCTGCC  
GCC**CGATCGCC**

ATGGTAAGCTCCAATGGCTCCCAGTGCCCTTATGACGACTCCTTTAAGTACACTCTGTACGGGTGCATGT  
TCAGCATGGTCTTCGTGCTTGGGCTGATATCCAAGTGTGGGATATACATTTTCATCTGTGCCCTCAA  
AGTGAGAAATGAAACTACAACGTACATGATTAACCTGGCAATGTCAGATTTACTTTTCGTCTTTACTTTG  
CCATTTTCGGATTTTTACTTTGCAACACGGAATGGCCATTTGGAGATCTACTCTGTAAGATTTTCAGTAA  
TGCTGTTTTACACCAATATGTATGGAAGCATTCTGTTCTTAACCTGTATCAGTGTAGATCGATTTCTGGC  
AATTGTCTACCCATTTAAGTCAAAGACTTTAAGAACGAAACGAAATGCAAAGATCGTTTGCATTGCTGTG  
TGGTTCACAGTGTGGGAGGAAGTGCAGCTGAGTTTCTTTTCAGTCGACCCACTCTCAGGGGAACAATA  
CCTCAGAAGCCTGCTTTGAGAACTTTCCAGCGCCACATGGAAAACCTTATCTCTCCAGGATTGTGATTTT  
CATTGAAATAGTGGGCTTTTTATCCCTCTCATTTTGAACGTAACCTGTTCTAGTATGGTGCTAAGAACT  
TTAAATAAACCTGTTACATTAAGTAGAAGCAAAATGAACAAAACCTAAGGTTTTAAAAATGATTTTGTCC  
ACTTGGTCATCTCTGTTCTGTTTTGTGCCCTACAACATCAACCTCATTTTGTACTCGCTCATGAGGAC  
GCAGACCTTTGTTAACTGCTCTGTGGTGGCGGCAGTGAGGACCATGTACCCGATCACTCTCTGCATCGCT  
GTCTCCAAGTCTGCTTTGACCCTATTGTTTACTACTTCACTCAGACACAATTCAGAACCTCAATAAAA  
TGAAAAACTGGTCGGTTAGAAGAAGTACTCCAGGTTCTCTGAAGTTCAGGGCACTGAGAATTTTATCCA  
ACACAACCTACAGACCTTAAAAATAAGATATTTGATAATGAATCTGCAATA

**ACGCGT**ACGCGGCCGCTCGAGCAGAAACTCATCTCAGAAGAGGATCTGGCAGCAATGATATCCTGGATT  
ACAAGGATGACGACGATAAGGTTTAA



[View online »](#)

**Protein Sequence:** >MR205172 protein sequence  
 Red=Cloning site Green=Tags(s)

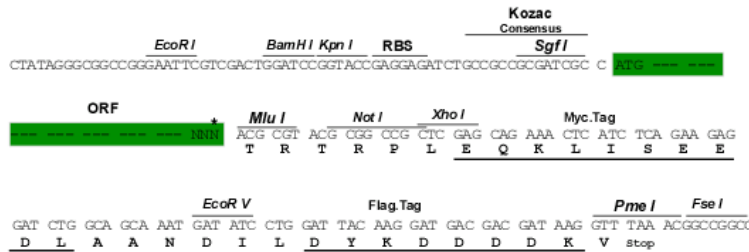
MVSSNGSQCPYDDSFKYTLYGCMFSMVFLGLISNCVAIYIFICALKVRNETTTYMINLAMSDLLFVFTL  
 PFRIFYFATRNWPFGLDLCKISVMLFYTNMYGSILFLTCISVDRFLAIVYPFKSKTLRTRKNAKIVCIAV  
 WFTVMGGSAPAVFFQSTHSQGNNTSEACFENFPAATWKTYLSRIVIFIEIVGFFIPLILNVTCSMVLRT  
 LNKPVTLRSKMNKTKVLKMI FVHLVIFCFV PYNINLILYSLMRTQTFVNCVVAAVRTMYPITLCIA  
 VSNCCFDPIVYYFTSDTIQNSIKMKNWSVRRSDSRFSEVQGTENFIQHNLQTLKKNKIFDNESAI

TRTRPLEQKLISEEDLAANDILDYKDDDDKV

**Restriction Sites:** SgfI-MluI

**Cloning Scheme:**

Cloning sites used for ORF Shuttling:



\* The last codon before the Stop codon of the ORF

**ACCN:** NM\_175116

**ORF Size:** 1035 bp

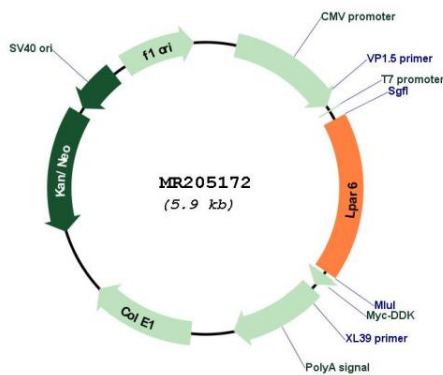
**OTI Disclaimer:** Due to the inherent nature of this plasmid, standard methods to replicate additional amounts of DNA in E. coli are highly likely to result in mutations and/or rearrangements. Therefore, OriGene does not guarantee the capability to replicate this plasmid DNA. Additional amounts of DNA can be purchased from OriGene with batch-specific, full-sequence verification at a reduced cost. Please contact our customer care team at [custsupport@origene.com](mailto:custsupport@origene.com) or by calling 301.340.3188 option 3 for pricing and delivery.

The molecular sequence of this clone aligns with the gene accession number as a point of reference only. However, individual transcript sequences of the same gene can differ through naturally occurring variations (e.g. polymorphisms), each with its own valid existence. This clone is substantially in agreement with the reference, but a complete review of all prevailing variants is recommended prior to use. [More info](#)

**OTI Annotation:** This clone was engineered to express the complete ORF with an expression tag. Expression varies depending on the nature of the gene.

<b>Components:</b>	The ORF clone is ion-exchange column purified and shipped in a 2D barcoded Matrix tube containing 10ug of transfection-ready, dried plasmid DNA (reconstitute with 100 ul of water).
<b>Reconstitution Method:</b>	<ol style="list-style-type: none"> <li>1. Centrifuge at 5,000xg for 5min.</li> <li>2. Carefully open the tube and add 100ul of sterile water to dissolve the DNA.</li> <li>3. Close the tube and incubate for 10 minutes at room temperature.</li> <li>4. Briefly vortex the tube and then do a quick spin (less than 5000xg) to concentrate the liquid at the bottom.</li> <li>5. Store the suspended plasmid at -20°C. The DNA is stable for at least one year from date of shipping when stored at -20°C.</li> </ol>
<b>RefSeq:</b>	<u><a href="#">NM_175116.1</a></u> , <u><a href="#">NM_175116.2</a></u> , <u><a href="#">NM_175116.3</a></u> , <u><a href="#">NM_175116.4</a></u> , <u><a href="#">NP_780325.1</a></u>
<b>RefSeq Size:</b>	2468 bp
<b>RefSeq ORF:</b>	1035 bp
<b>Locus ID:</b>	67168
<b>UniProt ID:</b>	<u><a href="#">Q8BMC0</a></u>
<b>Cytogenetics:</b>	14 D3
<b>MW:</b>	39.4 kDa
<b>Gene Summary:</b>	Binds to oleoyl-L-alpha-lysophosphatidic acid (LPA). Intracellular cAMP is involved in the receptor activation. Important for the maintenance of hair growth and texture (By similarity). [UniProtKB/Swiss-Prot Function]

**Product images:**



Circular map for MR205172