

Product datasheet for MR205162

Bdh1 (NM_001122683) Mouse Tagged ORF Clone

Product data:

Product Type:	Expression Plasmids
Product Name:	Bdh1 (NM_001122683) Mouse Tagged ORF Clone
Tag:	Myc-DDK
Symbol:	Bdh1
Synonyms:	2310032J20Rik; A1327223; Bdh
Mammalian Cell Selection:	Neomycin
Vector:	pCMV6-Entry (PS100001)
E. coli Selection:	Kanamycin (25 ug/mL)
ORF Nucleotide Sequence:	>MR205162 representing NM_001122683 Red=Cloning site Blue=ORF Green=Tags(s)

TTTTGTAATACGACTCACTATAGGGCGGCCGGAATTCGTCGACTGGATCCGGTACCGAGGAGATCTGCC
GCC**CGATCGCC**

ATGCTAGCTGCCGTCTCTCCAGACCCCTGTCACAGCTCCAGGAAAAGCCCTAAGTGCCGTGACAGAG
AAAATGGGACAAGACACACTGTTGTTTTATCCAGCATCCTTCAGCCCTGACACCCGTCGGACCTACGC
CAGTCAGGCAGATGCGGCTAGTGGCAAAGCTATCCTGATCACAGGCTGTGACTCTGGATTTGGGTTCTCA
CTGGCCAAGCATCTGCACTCAAAGGCTTCCTTGTATTTGCTGGCTGTTTGTGAAGGACAAAGGTGATG
CTGGGGTCAAGGAACTGGACAGCTTGAAGAGTGACCGACTGAGAACCATCCAGCTCAATGTCTGCAACAG
TGAAGAGGTGGAGAAGGCGGTGGAGACGATCCGCTCCGGCCTGAAAGATCCTGAGAAGGGAATGTGGGGC
CTGGTTAACAACGCAGGCATCTCAACGTTTGGGGAGGTGGAGTTCACCAGCATGGAGACATATAAGGAGG
TGGCTGAAGTGAACCTCTGGGAACCGTGCGCACCACAAAATCCTTCCCTTCTCCGAAGAGCCAA
AGGTCGCGTCGTTAACATCAGCAGCATGCTGGGCCGATGGCCAACCCGCCCCGCTCGCCATACTGCATC
ACCAAGTTTGGGATCGAGGCTTCTCGGACTGCCTGCGCATGAGATGCACCCCTCTGGGTGTCAAGGTCA
GTGTGGTGAACCTGGCAACTTCATAGCGGCCACCAGTCTCTACAGCCCCGAGCGCATCCAGGCCATCGC
CAAGAAGATGTGGATGACCTGCCTGAGGTCGTCGCAAGGACTATGGCAGGAAGTACTTCGATGAAAAG
ATTGCCAAGATGGAACTACTGCAACAGCGGTTCCACAGATACTTCTCTGTCATCAACGCTGTCACAC
ACGCCTTGACCGCCGCCACCCCGTATACCCGCTACCATCCATGGACTACTGTTGGCTTCGGATGCA
GATCATGACCCATTTTCTGGAGCCATCTCTGACAAGATCTACATACAC

ACGCGTACGCGGCCGCTCGAGCAGAACTCATCTCAGAAGAGGATCTGGCAGCAAATGATATCCTGGATT
ACAAGGATGACGACGATAAGGTTTAA



[View online »](#)

Protein Sequence: >MR205162 representing NM_001122683
 Red=Cloning site Green=Tags(s)

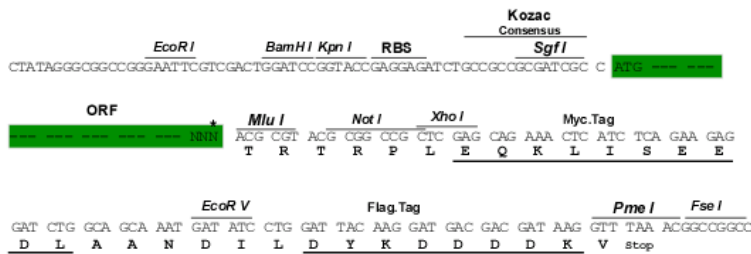
MLAARLSRPLSQLPGKALSVRDRENGTRHTLLFYPAFSPDTRRTYASQADAASGKAILITGCDSGFGFS
 LAKHLHSKGFVLFAGCLMKDKGDAGVKELDSLKSDRLRTIQLNVCNSEEVEKAVETIRSGLDPEKGMWG
 LVNNAGISTFGEVEFTSMETYKEVAEVLNWTVRTTKSFLPLLRRAKGRVNVISMLGRMANPARSPYCI
 TKFGIEAFSDCLRYEMHPLGVKVSVEPGNFIAATSLYSPERIQAIKKMWDLLPEVVRKDYGRKYFDEK
 IAKMETYCNSGSTDTSSVINAVTHALTAATPYTRYHPMDYYWLLRMQIMTHFGAISDKIYIH

TRTRPLEQKLISEEDLAANDILDYKDDDDKV

Restriction Sites: SgfI-MluI

Cloning Scheme:

Cloning sites used for ORF Shuttling:



* The last codon before the Stop codon of the ORF

ACCN: NM_001122683

ORF Size: 1029 bp

OTI Disclaimer: The molecular sequence of this clone aligns with the gene accession number as a point of reference only. However, individual transcript sequences of the same gene can differ through naturally occurring variations (e.g. polymorphisms), each with its own valid existence. This clone is substantially in agreement with the reference, but a complete review of all prevailing variants is recommended prior to use. [More info](#)

OTI Annotation: This clone was engineered to express the complete ORF with an expression tag. Expression varies depending on the nature of the gene.

Components: The ORF clone is ion-exchange column purified and shipped in a 2D barcoded Matrix tube containing 10ug of transfection-ready, dried plasmid DNA (reconstitute with 100 ul of water).

Reconstitution Method:

1. Centrifuge at 5,000xg for 5min.
2. Carefully open the tube and add 100ul of sterile water to dissolve the DNA.
3. Close the tube and incubate for 10 minutes at room temperature.
4. Briefly vortex the tube and then do a quick spin (less than 5000xg) to concentrate the liquid at the bottom.
5. Store the suspended plasmid at -20°C. The DNA is stable for at least one year from date of shipping when stored at -20°C.

RefSeq: [NM_001122683.1](#), [NP_001116155.1](#)

RefSeq Size: 3133 bp

RefSeq ORF: 1032 bp

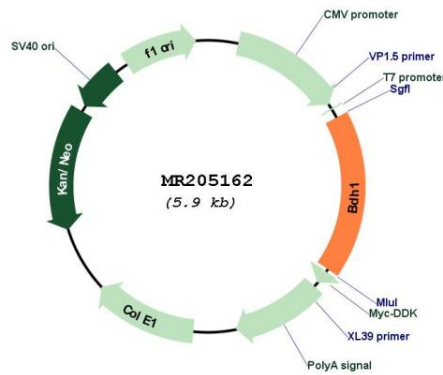
Locus ID: 71911

UniProt ID: [Q80XN0](#)

Cytogenetics: 16 B2

MW: 38.3 kDa

Product images:



Circular map for MR205162