

Product datasheet for MR205157

Zdhhc4 (NM_028379) Mouse Tagged ORF Clone

Product data:

Product Type:	Expression Plasmids
Product Name:	Zdhhc4 (NM_028379) Mouse Tagged ORF Clone
Tag:	Myc-DDK
Symbol:	Zdhhc4
Synonyms:	1810021D01Rik; 2900029I10Rik; DHHC-4
Mammalian Cell Selection:	Neomycin
Vector:	pCMV6-Entry (PS100001)
E. coli Selection:	Kanamycin (25 ug/mL)
ORF Nucleotide Sequence:	>MR205157 ORF sequence Red=Cloning site Blue=ORF Green=Tags(s)

TTTTGTAATACGACTCACTATAGGGCGCCGGGAATTCGTCGACTGGATCCGGTACCGAGGAGATCTGCC
GCC**CGATCGCC**

ATGGACTTCTGGTTCTTCTTGTGTTCTACTTGGCCTTCTTATTGATTTGTGTTGCTGATCTGCATCT
TCACAAAAAGCCAGCGTTTGAAGCCGTTGCTTGGAGGAGCACAGGTGTGCTCCAGGGTAATCCCGCA
GTGCCTCCAGAGGGCCGTGCAGACGTTCTTCATCAGCTCTCCACACACGCCACCCACCTTCATCGTC
TTGCACCTGCTCTTGAAGGGCTAGTGTATGCAGAATACACCTGCGAGGTCTTCGGCTATTGCCGGGAGC
TGGAGTTCTCTGCCTTACCTTCTCCTGCCCTATGTGCTGCTAAGCGTGAACCTGGTGTCTTCCACCT
GACTTGTGCCCAATCCTGGTACCATCACTAAAGCAAACGAATCATTTCTTCTGCAAGTCTATAAATTC
GATGATGTGATGTTTCCAAGAAGCTCGAGGTGCCCACTTGCATTTAAGGAAACAGCCCGCTCCAAGC
ACTGCAGGTTGTGTGACCCTGTGTGCACCGGTTCCGACCATCACTGTGTTGGGTGAACAACTGCATCGG
GGCCTGGAACACCAGGTACTTCTCATTACCTCCTGACGCTGACGGCTTCTGCTGCCACCATAGCCACC
GTGACTGCTGCCTTCTGCTCCGCCTAGTGACAGTGTCTGATCTCTACCAGGAACTTACCTAGATGACG
TGGGGCATTCCAGGCTGTGGACACTGTCTTCTTATTGAGCATCTGTTCTGCTGGCATTCCAAGGATTGT
CTTCTACTGGCTTTGTATCGTTTGGAGCATGCTCCTGGCTGGCTACTGTGCTTTGCTGTACCTG
GCTGCCACCAACCAGACCACAAAATGAATGGTATAAAGGCGACTGGCCTGGTGGCAGCGCTGGCCTCTGG
TGGCTTGGTCCCATCAGCTGAGCCCGGATCCACCAGAACATTCACTCCACGGGTTTAGGAGCAACCT
TCGAGAGATCTTCTACCTGCTACCCCCAGTTACAAGAAAAAGGAGAAA

ACGCGTACGCGGCCGCTCGAGCAGAACTCATCTCAGAAGAGGATCTGGCAGCAATGATATCCTGGATT
ACAAGGATGACGACGATAAGGTTTAA



[View online »](#)

Protein Sequence: >MR205157 protein sequence
Red=Cloning site Green=Tags(s)

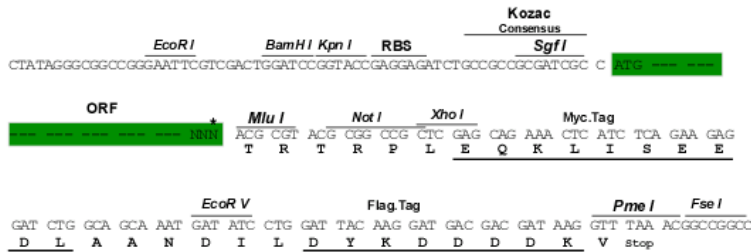
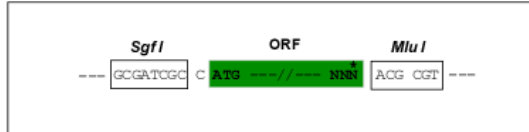
MDFLVLFVLYLAFLLICVVLICIFTKSQRLKAVLVGGAQVCSRVIPOCLQRAVQTLHQLFHTRHPTFIV
 LHLLQLGLVYAEYTCVEVFGYCRELEFSLPYLLLPYVLLSVNLVFFTLTCAANPGTITKANESFLLQVYKF
 DDVMFPKNSRCP TCDLRKPARSKHCRLCDRCVHRFDHHCVWVNNCIGAWNTRYFLIYLLTLTASAATIAT
 VTA AFLRLRVTVSDLYQETYLDVGHFQAVDTVFLIQHLFLAFPRIVFLLGFVIVLSMLLAGYLCFALYL
 AATNQTTNEWYKGDWAWCQRWPLVAWSPSAEPRIHQNIHSHGFRSNLREIFLPATPSYKKKEK

TRTRPLEQKLISEEDLAANDILDYKDDDDKV

Restriction Sites: SgfI-MluI

Cloning Scheme:

Cloning sites used for ORF Shuttling:



* The last codon before the Stop codon of the ORF

ACCN: NM_028379

ORF Size: 1032 bp

OTI Disclaimer: The molecular sequence of this clone aligns with the gene accession number as a point of reference only. However, individual transcript sequences of the same gene can differ through naturally occurring variations (e.g. polymorphisms), each with its own valid existence. This clone is substantially in agreement with the reference, but a complete review of all prevailing variants is recommended prior to use. [More info](#)

OTI Annotation: This clone was engineered to express the complete ORF with an expression tag. Expression varies depending on the nature of the gene.

Components: The ORF clone is ion-exchange column purified and shipped in a 2D barcoded Matrix tube containing 10ug of transfection-ready, dried plasmid DNA (reconstitute with 100 ul of water).

Reconstitution Method:

1. Centrifuge at 5,000xg for 5min.
2. Carefully open the tube and add 100ul of sterile water to dissolve the DNA.
3. Close the tube and incubate for 10 minutes at room temperature.
4. Briefly vortex the tube and then do a quick spin (less than 5000xg) to concentrate the liquid at the bottom.
5. Store the suspended plasmid at -20°C. The DNA is stable for at least one year from date of shipping when stored at -20°C.

RefSeq: [NM_028379.5](#)

RefSeq Size: 1363 bp

RefSeq ORF: 1032 bp

Locus ID: 72881

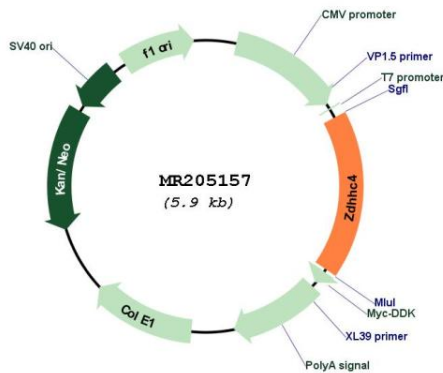
UniProt ID: [Q9D6H5](#)

Cytogenetics: 5 G2

MW: 39.5 kDa

Gene Summary: Palmitoyltransferase that could catalyze the addition of palmitate onto protein substrates including the D(2) dopamine receptor DRD2.[UniProtKB/Swiss-Prot Function]

Product images:



Circular map for MR205157