

## Product datasheet for MR205151

### Tdp1 (BC019804) Mouse Tagged ORF Clone

#### Product data:

Product Type:	Expression Plasmids
Product Name:	Tdp1 (BC019804) Mouse Tagged ORF Clone
Tag:	Myc-DDK
Symbol:	Tdp1
Synonyms:	2810481F14Rik; 4921509N21Rik; A1838772; AW493413; E430034L06Rik; MLZ-501; SCAN1
Mammalian Cell Selection:	Neomycin
Vector:	pCMV6-Entry (PS100001)
E. coli Selection:	Kanamycin (25 ug/mL)
ORF Nucleotide Sequence:	>MR205151 ORF sequence Red=Cloning site Blue=ORF Green=Tags(s)

TTTTGTAATACGACTCACTATAGGGCGGCCGGAATTCGTCGACTGGATCCGGTACCGAGGAGATCTGCC  
GCC**CGATCGCC**

ATGATGCTCTTGCTCTATGAAGAAGGCCTCCGAGTTGTCATCCACACCTCCAACCTCATCCGGGAAGACT  
GGCACCAGAAAACCAAGGAATATGGTTGAGCCCTTTGTACCCGAGAATTGACCAGGGAAGCCACGCAGC  
TGGAGAGTCAAGCACCCGTTTCAAAGCTGACCTCATCAGTTATCTGACGGCGTAAACGCTCCCCCTTTG  
CAGGAGTGGATAGACATCATCAAGAGCATGACCTCTCTGAGACCAATGTTTACCTCATTGGTTCAACCC  
CTGGACGCTTTCAAGGAAGTCACAGAGATAACTGGGGACATTTTAGGCTTAGAAAAGCTTCTGCAAGCGCA  
TGCCCCGTCCACACCCAAGGGCGAGTGTGGCCTATCGTGGGTCAGTTCTCAAGCATCGGCTCCCTGGGG  
CCCGATGAATCCAAGTGGCTGTGCTCAGAGTTAAAGACAGCTTGTGGCACTGAGAGAGGAAGGCCGAC  
CTCCGGGCAAGAGTGCAGTTCCTCTTATCTGATCTATCCCTCTGTGAAAATGTGCGGACCAGCTTAGA  
AGGATACCCTGTGGGGCTCTCTCCCTATAGCATCCAGACGGCTGAAAAGCAGAGGTGGCTGCACTCC  
TACTTCCACAAGTGGTCAGCAGAGACATCCGGCCGAAGTAATGCCATGCCACATATTAAGACGTACATGA  
GGCCCTCGCCAGACTTCAGTAACTGGCTTGGTTCTGGTCACAAGTGGCAATCTGTCCAAGGCTGCCTG  
GGGGCAGCTGGAGAAGAACGGCACCCAGCTGATGATACGCTCCTACGAGCTCGGGTCTCTTCTCCCG  
TCTGCGTTTGGCCTGGACACCTTCAAAGTGAACAGAAATCTTCTCCAGCAGCTGTGAGCCGACGGCCT  
CCTTTCCTGTGCCCTATGACCTGCCCCAGAGCTGTACAGGAGTAAAGACCGGCTTGGATTTGGAACAT  
TCCTTATGTCAAAGCACCTGACACGCACGGCAACATGTGGGTGCCCTCC

**ACGCGT**ACGCGGCCGCTCGAGCAGAAACTCATCTCAGAAGAGGATCTGGCAGCAAATGATATCCTGGATT  
ACAAGGATGACGACGATAAGGTTTAA



[View online »](#)

**Protein Sequence:** >MR205151 protein sequence  
 Red=Cloning site Green=Tags(s)

MMLLL YEEGLRVVIHTSNLIREDWHQKTQGIWLSPLYPRIDQGSHAAGESSTRFKADLISYLTAYNAPPL  
 QEWIDI IQEHDLSETNVYLIGSTPGRFQGSHRDNWHGFRLLKLLQAHAPSTPKGECWPIVGQFSSIGSLG  
 PDESKWLCSEFKDSSLALREEGRPPGKSAVPLHLIYPSVENVRTSLEGYPAGGSLPYSIQTAEKQRWLHS  
 YFHKWSAETSGRSNAMPHIKTYMRPSPDFSKLAWFLVTSANLSKAAWGALEKNGTQLMIRSVELGLVFLP  
 SAFGLDFTKVKQKFFSSSCEPTASFPVPYDLPELYRSKDRPWIWNIPYVKAPDTHGNMWVPS

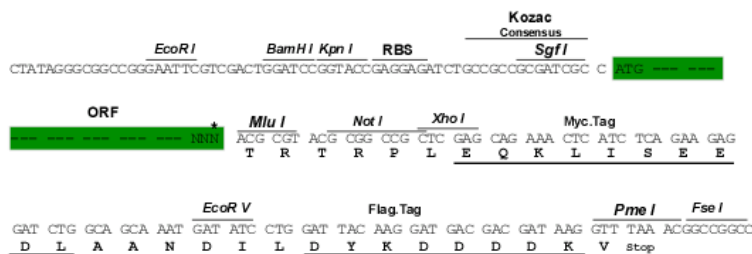
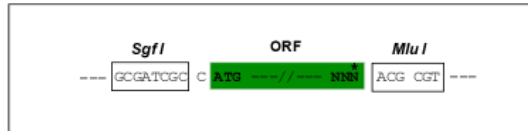
TRTRPLEQKLISEEDLAANDILDYKDDDDKV

**Restriction Sites:**

Sgfi-MluI

**Cloning Scheme:**

Cloning sites used for ORF Shuttling:



\* The last codon before the Stop codon of the ORF

**ACCN:** BC019804

**ORF Size:** 1029 bp

**OTI Disclaimer:** The molecular sequence of this clone aligns with the gene accession number as a point of reference only. However, individual transcript sequences of the same gene can differ through naturally occurring variations (e.g. polymorphisms), each with its own valid existence. This clone is substantially in agreement with the reference, but a complete review of all prevailing variants is recommended prior to use. [More info](#)

**OTI Annotation:** This clone was engineered to express the complete ORF with an expression tag. Expression varies depending on the nature of the gene.

**Components:** The ORF clone is ion-exchange column purified and shipped in a 2D barcoded Matrix tube containing 10ug of transfection-ready, dried plasmid DNA (reconstitute with 100 ul of water).

- Reconstitution Method:**
1. Centrifuge at 5,000xg for 5min.
  2. Carefully open the tube and add 100ul of sterile water to dissolve the DNA.
  3. Close the tube and incubate for 10 minutes at room temperature.
  4. Briefly vortex the tube and then do a quick spin (less than 5000xg) to concentrate the liquid at the bottom.
  5. Store the suspended plasmid at -20°C. The DNA is stable for at least one year from date of shipping when stored at -20°C.

**RefSeq:** [BC019804](#), [AAH19804](#)

**RefSeq Size:** 1392 bp

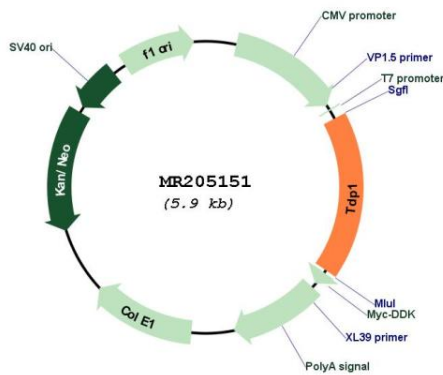
**RefSeq ORF:** 1031 bp

**Locus ID:** 104884

**Cytogenetics:** 12 E

**MW:** 38.9 kDa

**Product images:**



Circular map for MR205151