

## Product datasheet for MR205078

### Hemk1 (NM\_133984) Mouse Tagged ORF Clone

#### Product data:

Product Type:	Expression Plasmids
Product Name:	Hemk1 (NM_133984) Mouse Tagged ORF Clone
Tag:	Myc-DDK
Symbol:	Hemk1
Synonyms:	2310008M14Rik; AW049265
Mammalian Cell Selection:	Neomycin
Vector:	pCMV6-Entry (PS100001)
E. coli Selection:	Kanamycin (25 ug/mL)
ORF Nucleotide Sequence:	>MR205078 ORF sequence Red=Cloning site Blue=ORF Green=Tags(s)

TTTTGTAATACGACTCACTATAGGGCGGCCGGAATTCGTCGACTGGATCCGGTACCGAGGAGATCTGCC  
GCC**CGATCGCC**

ATGAAGCTCTGGGGACAAATACTTTGGACCCTTCTATCTGTTCCCGAGGAAGGAGGGGAGTCCTCCAGG  
GCTGGGCTTCAACTCATGGAAGACTTATTCATCCCTGACTGGGCCGTTGAGTGCCACAGGGATGGTTAA  
TCACTGGACACAGGTCTTTGAGGAAAGAGGTATCCCAGAGGCCCGGAATCCAGTGAGTACATCGTGGCT  
CATGTCTCGGAGCCAAAACATTTAGAGCCTGAAACCAGCACTTTGGACCAAGCCACTGACCCCTCAAC  
AATTGGAATGCATCCAGGAGCTATGTGGCCATAGATTACAGAGGATGCCGGTGCAGTATATCCTTGGGGA  
GTGGGACTTTAGGGGCTCAGTCTGAAGATGGTACCCCAAGTGTTCATCCCTCGGCCAGAGACAGAAGAA  
CTGGTTGAATGGGTTTTAGAGGAAGTGGCCCGGAGGCCCATGCAGTGAGAGCCAGGATGGTCCCTCA  
TTCTGGAGGTGGGCTGTGGATCAGGAGCCATTACTCTCAGCCTGCTGAGCCAGCTCCCAAGAGTCGAGT  
TGTTGCTGTGGATAAGGAGGAAGCTGCTGTTAGTCTGACCCATGAGAATGCTCGGAGGCTTCAGTGCAG  
GACAGGATCCGGATCATCTGCCTTGATATAACCTCAGAGGGGTGCTGCACACACCTTTGGCCCTGGAGCC  
CCTTGGACTTGGTGGTCAGCAACCCTCCCTACATCTTCCGAAGGACATGGAACAGCTGGCTCCAGAGAT  
CTGCAGTTACGAAGATCTGGTGGCCCTGGATGGTGGTACGAAGGCATGGACATCATCACCACATCTTG  
ACCTTGGCACCCAGCTTTGAATGCCTCTGGAAGCATCTTCTTAGAAGTAGACCAAGACACCCAGAGC  
TTGTCAGCAGTTGGCTTCAGAGCCATCCTGACCTGCACCTTAGTCTTGTGGGAGTCCGTGAAGACTTCTG  
TGGGAGGCCCGTTCCTGCATGTCCAGAAGTCTGCACCA

**ACGCGT**ACGCGGCCGCTCGAGCAGAACTCATCTCAGAAGAGGATCTGGCAGCAAATGATATCCTGGATT  
ACAAGGATGACGACGATAAGGTTTAA



[View online »](#)

**Protein Sequence:** >MR205078 protein sequence  
 Red=Cloning site Green=Tags(s)

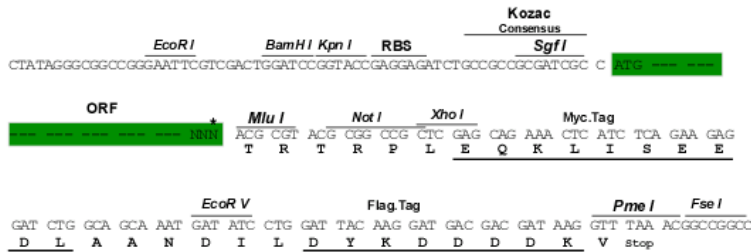
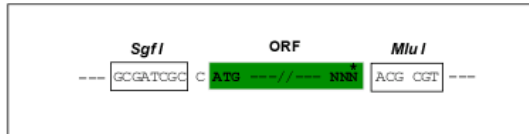
MKLWGQILWTLLSVPRGRRGVLQGWAFNSWKTYSSLTGPLSATGMVNHWTQVFEERGIPEARESSEYIVA  
 HVLGAKTFQSLKPALWTKPLTPQQLECIQELCGHRLQRMPVQYILGEWDFQGLSLKMPVPVFIIPRPETEE  
 LVEWLEEVARRPHAVRAQDGPLILEVCGSGAITLSLLSQLPKSRVVAVDKEEAASLTHENARRLQLQ  
 DRIRIICLDITSEGCCTHLLPWSPLDLVSNPPYIFRKDMEQLAPEICSYEDLVALDGGDEGMDIITHIL  
 TLAPQLLNASGSIFLEVDPRHPELVSSWLQSHPDHLHSLVGVREDFCGRPRFLHVQKSAP

TRTRPLEQKLISEEDLAANDILDYKDDDDKV

**Restriction Sites:** SgfI-MluI

**Cloning Scheme:**

Cloning sites used for ORF Shuttling:



\* The last codon before the Stop codon of the ORF

**ACCN:** NM\_133984

**ORF Size:** 1023 bp

**OTI Disclaimer:** The molecular sequence of this clone aligns with the gene accession number as a point of reference only. However, individual transcript sequences of the same gene can differ through naturally occurring variations (e.g. polymorphisms), each with its own valid existence. This clone is substantially in agreement with the reference, but a complete review of all prevailing variants is recommended prior to use. [More info](#)

**OTI Annotation:** This clone was engineered to express the complete ORF with an expression tag. Expression varies depending on the nature of the gene.

**Components:** The ORF clone is ion-exchange column purified and shipped in a 2D barcoded Matrix tube containing 10ug of transfection-ready, dried plasmid DNA (reconstitute with 100 ul of water).

**Reconstitution Method:**

1. Centrifuge at 5,000xg for 5min.
2. Carefully open the tube and add 100ul of sterile water to dissolve the DNA.
3. Close the tube and incubate for 10 minutes at room temperature.
4. Briefly vortex the tube and then do a quick spin (less than 5000xg) to concentrate the liquid at the bottom.
5. Store the suspended plasmid at -20°C. The DNA is stable for at least one year from date of shipping when stored at -20°C.

**RefSeq:** [NM\\_133984.1](#), [NP\\_598745.1](#)

**RefSeq Size:** 2194 bp

**RefSeq ORF:** 1023 bp

**Locus ID:** 69536

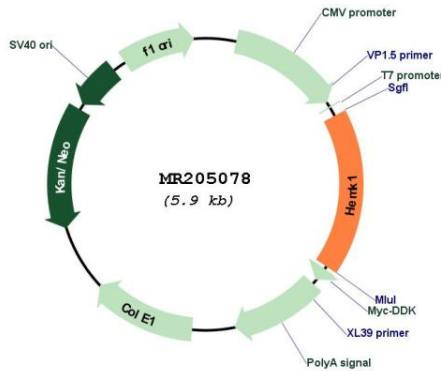
**UniProt ID:** [Q921L7](#)

**Cytogenetics:** 9 F1

**MW:** 38.2 kDa

**Gene Summary:** N5-glutamine methyltransferase responsible for the methylation of the glutamine residue in the universally conserved GGQ motif of the mitochondrial translation release factor MTRF1L. [UniProtKB/Swiss-Prot Function]

**Product images:**



Circular map for MR205078