

Product datasheet for MR205052

H2 (BC058170) Mouse Tagged ORF Clone

Product data:

Product Type:	Expression Plasmids
Product Name:	H2 (BC058170) Mouse Tagged ORF Clone
Tag:	Myc-DDK
Symbol:	H2
Synonyms:	H2-B1; H2-BI-like
Mammalian Cell Selection:	Neomycin
Vector:	pCMV6-Entry (PS100001)
E. coli Selection:	Kanamycin (25 ug/mL)
ORF Nucleotide Sequence:	>MR205052 ORF sequence Red=Cloning site Blue=ORF Green=Tags(s)

TTTTGTAATACGACTCACTATAGGGCGGCCGGAATTCGTCGACTGGATCCGGTACCGAGGAGATCTGCC
GCC**CGATCGCC**

ATGGCGCAGCGAACGCTGCTCCTGCTGCTGGCAGCCGCCCTGACCATGATCCAGACTCGCGCGGTGTTCCG
GGCCCGGCTCGGGGAGCCCCGGTTCATCTGTGCGCTACGTGGACAACACGCAGTTCGTGAGCTTCGA
CAGCGACGCGGAGAATCCGAGATCTGAGCCGGTCGCCCTGGATGGAGCAGGAGGGACCGGAGTATTGG
GAGCGGAAACACAGATCGCCAAGGACAATGAGCAGAGTTTCGGATGGAGCCTGAGGAACCTGATCCACT
ACTACAACCAGAGCAAGGTTGGCTTTCACACATCCAGCGTTGTCTGGCTGTGACATGGGTTGGACGG
GGCCTCCTCCGCGGTACCTGCAGTTCGCTTATGATGGCCGCGATTACATCGCCCTGAACGAAGACCTG
AAAACGTGGATGGCGCGGACCTGGTAGCGCTGATCACCCGACGCAAGTGGGAGCAGGCTGGTGCTGCAG
AGCTATAACAAGTTCTACCTAGAGGGCGAATGCGTGGAGTGGCTTCGCAGATACCTGGAGCTCGGGAATGA
GACGCTGCTGCGCACAGATCCCCAAAGGCCATGTGACCCGTCATCCAGACCTGCAGGTGATGTCACC
CTGAGGTGCTGGGCCCTGGGCTTCTACCCTGTGACATCACCCGACCTGGCAGTTGAATGGGGAGGAGC
TGACCCAGGACATGGAGCTTGTGGAGACCAGGCCTGCAGGGATGGAACCTCCAGAAGTGGCAGCTGT
GGTGGTGCCTCTGGGAAAGAGCAGAATTATACATGCCGTGTGCACCATGAGGGGCTGCCTGAGCCACTC
ACCCTGAGATGGGAGCCTCCTCCATCAACCGGCTCCAACATGGTAAACATAGCTGTTCTGGTTGTCCTTG
GAGCTGTGATCATCATTGAAGCTATGGTGGCTTTGCGTTGAAGAGCAGGAGAAAAATAGCCATCCTTCC
TGGTCCAGCAGGCACTAGGGGATCATCTGCATCC

ACGCGTACGCGGCCGCTCGAGCAGAACTCATCTCAGAAGAGGATCTGGCAGCAATGATATCCTGGATT
ACAAGGATGACGACGATAAGGTTTAA



[View online »](#)

Protein Sequence: >MR205052 protein sequence
Red=Cloning site Green=Tags(s)

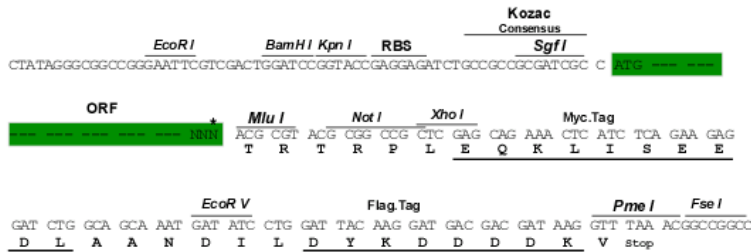
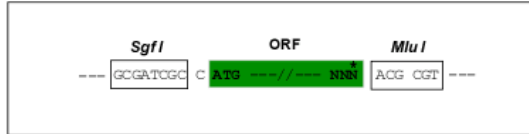
MAQRLLLLLLAAAL TMIQTRAVFGPGLGEPRFISVGYVDNTQFVSFSDSAENPRSEPRSPWMEQEGPEYW
 ERETQIAKDNEQSFQWGLRNL IHYYNQSKGGFHTFQRLSGCDMGLDGRLLRGLYQFAYDGRDYIALNEDL
 KTWMAADLVALITRRKWEQAGAAELYKFYLEGECVEWLRRYLELGNETLLRTDPPKAHVTRHPRPAGDVT
 LRCWALGFYPADITL TWQLNGEELTQDMELVETRPAGDGTFFQKWAAVVPLGKEQNYTCRVHHEGLPEPL
 TLRWEPPTSGSNMNVIAVLVVLGAVIIIEAMVAFALKSRRKIAILPGPAGTRGSSAS

TRTRPLEQKLISEEDLAANDILDYKDDDDKV

Restriction Sites: SgfI-MluI

Cloning Scheme:

Cloning sites used for ORF Shuttling:



* The last codon before the Stop codon of the ORF

ACCN: BC058170

ORF Size: 1014 bp

OTI Disclaimer: The molecular sequence of this clone aligns with the gene accession number as a point of reference only. However, individual transcript sequences of the same gene can differ through naturally occurring variations (e.g. polymorphisms), each with its own valid existence. This clone is substantially in agreement with the reference, but a complete review of all prevailing variants is recommended prior to use. [More info](#)

OTI Annotation: This clone was engineered to express the complete ORF with an expression tag. Expression varies depending on the nature of the gene.

Components: The ORF clone is ion-exchange column purified and shipped in a 2D barcoded Matrix tube containing 10ug of transfection-ready, dried plasmid DNA (reconstitute with 100 ul of water).

Reconstitution Method:

1. Centrifuge at 5,000xg for 5min.
2. Carefully open the tube and add 100ul of sterile water to dissolve the DNA.
3. Close the tube and incubate for 10 minutes at room temperature.
4. Briefly vortex the tube and then do a quick spin (less than 5000xg) to concentrate the liquid at the bottom.
5. Store the suspended plasmid at -20°C. The DNA is stable for at least one year from date of shipping when stored at -20°C.

RefSeq: [BC058170](#), [AAH58170](#)

RefSeq Size: 1375 bp

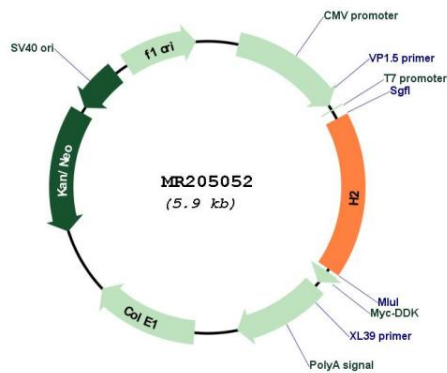
RefSeq ORF: 1016 bp

Locus ID: 14963

Cytogenetics: 17 18.89 cM

MW: 38.1 kDa

Product images:



Circular map for MR205052