

Product datasheet for MR205016

Il1r1 (NM_010743) Mouse Tagged ORF Clone

Product data:

Product Type:	Expression Plasmids
Product Name:	Il1r1 (NM_010743) Mouse Tagged ORF Clone
Tag:	Myc-DDK
Symbol:	Il1r1
Synonyms:	DER4; Fit-1; Ly84; St2; St2-rs1; ST2L; T1; T1/ST2
Mammalian Cell Selection:	Neomycin
Vector:	pCMV6-Entry (PS100001)
E. coli Selection:	Kanamycin (25 ug/mL)
ORF Nucleotide Sequence:	>MR205016 ORF sequence Red=Cloning site Blue=ORF Green=Tags(s)

TTTTGTAATACGACTCACTATAGGGCGGCCGGAATTCGTCGACTGGATCCGGTACCGAGGAGATCTGCC
GCC**CGATCGCC**

ATGATTGACAGACAGAGAATGGGACTTTGGGCTTTGGCAATTCGACACTTCCCATGATTTGACAGTTA
CGGAGGGCAGTAAATCGTCCTGGGGTCTGGAAATGAGGCTTTAATTGTGAGATGCCCCAAAGAGGACG
CTCGACTTATCCTGTGGAATGGTATTACTCAGATACAAATGAAAGTATTCCTACTCAAAAAAGAAATCGG
ATCTTTGTCTCAAGAGATCGTCTGAAGTTCTACCAGCCAGAGTGAAGACTCTGGGATTTATGCTTGTG
TTATCAGAAGCCCAACTGAATAAGACTGGATACTTGAATGTCACCATACATAAAAAGCCGCAAGCTG
CAATATCCCTGATTATTTGATGTACTCGACAGTACGTGGATCAGATAAAAATTTCAAGATAACGTGTCCA
ACAATTGACCTGTATAATTGGACAGCACCTGTTCAAGTGGTTAAGAAGCTCAGAAAGCTCTCCAAGAGCCAA
GGTTACAGGCACACAGGTCTACTTGTTCATTGACAACGTGACTCATGATGATGAAGGTGACTACACTTG
TCAATTCACACACGCGGAGAATGGAACCACTACATCGTGACGGCCACCAGATCATTACAGTTGAAGAA
AAAGGCTTTTCTATGTTCCAGTAATTACAAATCCTCCATACAACCACACAATGGAAGTGGAAATAGGAA
AACCAGCAAGTATTGCCTGTTGCTTGGCTTTGGCAAAGGCTCTCACTTCTTGGCTGATGTCCTGTGGCA
GATTAACAAAACAGTAGTTGAAATTTGGTGAAGCAAGAATTCAGAAGAGGAAGTCAAGATGAAAGT
TCCAGCAATGACATGGATTGTTAACCTCAGTGTAAAGGATAACTGGTGTGACAGAAAAGGACCTGTCCC
TGGAAATGACTGTCTGGCCCTGAACCTTCATGGCATGATAAGGCACACCATAAGGCTGAGAAGGAAACA
ACCAAGTAAGGAGTGTCCCTCACACATTGCT

ACGCGTACGCGGCCGCTCGAGCAGAAACTCATCTCAGAAGAGGATCTGGCAGCAAATGATATCCTGGATT
ACAAGGATGACGACGATAAGGTTTAA



[View online »](#)

Protein Sequence: >MR205016 protein sequence
Red=Cloning site Green=Tags(s)

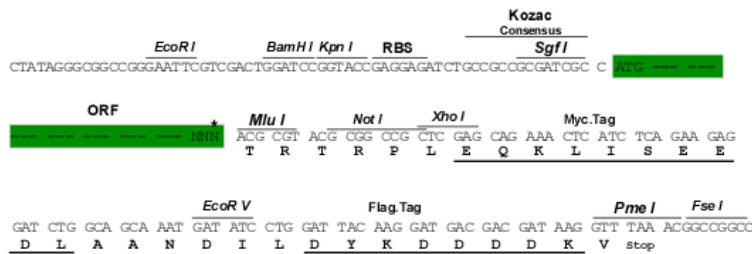
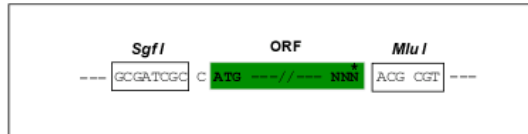
MIDRQRMGLWALAILTLPMLYLVTEGSKSSWGLENEALIVRCPQGRGRSTYPVEWYSDTNESIPTQKRNR
 IFVSRDLKFLPARVEDSGIYACVIRSPNLNKTGYLNVTIHKKPPSCNIPDYLMYSTVRGSDKNFKITCP
 TIDLYNWTAPVQWFKNCKALQEPRFRAHRSYLFIDNVTHDDEGDYTCQFTHAENGTNYIVTATRSFTVEE
 KGFSMFPVITNPPYNHTMEVEIGKPASIACSACFGKGSFLADVLWQINKTVVGNFGEARIQEEEGRNES
 SSNDMDCLTSLVRITGVTEKDLSEYDCLALNLHGMIRHTIRLRRKQPSKECP SHIA

TRTRPLEQKLISEEDLAANDILDYKDDDDKV

Restriction Sites: SgfI-MluI

Cloning Scheme:

Cloning sites used for ORF Shuttling:



* The last codon before the Stop codon of the ORF

ACCN: NM_010743

ORF Size: 1014 bp

OTI Disclaimer: The molecular sequence of this clone aligns with the gene accession number as a point of reference only. However, individual transcript sequences of the same gene can differ through naturally occurring variations (e.g. polymorphisms), each with its own valid existence. This clone is substantially in agreement with the reference, but a complete review of all prevailing variants is recommended prior to use. [More info](#)

OTI Annotation: This clone was engineered to express the complete ORF with an expression tag. Expression varies depending on the nature of the gene.

Components: The ORF clone is ion-exchange column purified and shipped in a 2D barcoded Matrix tube containing 10ug of transfection-ready, dried plasmid DNA (reconstitute with 100 ul of water).

Reconstitution Method:

1. Centrifuge at 5,000xg for 5min.
2. Carefully open the tube and add 100ul of sterile water to dissolve the DNA.
3. Close the tube and incubate for 10 minutes at room temperature.
4. Briefly vortex the tube and then do a quick spin (less than 5000xg) to concentrate the liquid at the bottom.
5. Store the suspended plasmid at -20°C. The DNA is stable for at least one year from date of shipping when stored at -20°C.

RefSeq: [NM_010743.3](#)

RefSeq Size: 3071 bp

RefSeq ORF: 1014 bp

Locus ID: 17082

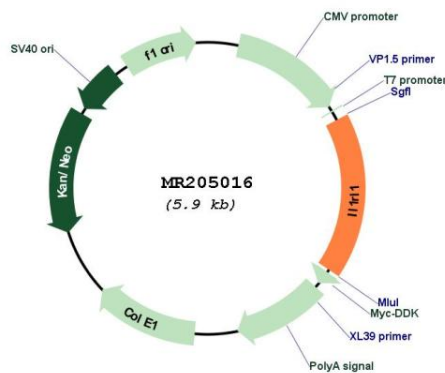
UniProt ID: [P14719](#)

Cytogenetics: 1 19.19 cM

MW: 38.5 kDa

Gene Summary: Receptor for interleukin-33 (IL-33); signaling requires association of the coreceptor IL1RAP (PubMed:18450470, PubMed:17675517). Its stimulation recruits MYD88, IRAK1, IRAK4, and TRAF6, followed by phosphorylation of MAPK3/ERK1 and/or MAPK1/ERK2, MAPK14, and MAPK8 (By similarity). Possibly involved in helper T-cell function.[UniProtKB/Swiss-Prot Function]

Product images:



Circular map for MR205016