

Product datasheet for MR204982

Hibadh (NM_145567) Mouse Tagged ORF Clone

Product data:

Product Type:	Expression Plasmids
Product Name:	Hibadh (NM_145567) Mouse Tagged ORF Clone
Tag:	Myc-DDK
Symbol:	Hibadh
Synonyms:	6430402H10Rik; AI265272
Mammalian Cell Selection:	Neomycin
Vector:	pCMV6-Entry (PS100001)
E. coli Selection:	Kanamycin (25 ug/mL)
ORF Nucleotide Sequence:	>MR204982 ORF sequence Red=Cloning site Blue=ORF Green=Tags(s)

TTTTGTAATACGACTCACTATAGGGCGGCCGGAATTCGTCGACTGGATCCGGTACCGAGGAGATCTGCC
GCC**CGATCGCC**

ATGGCAGCCTCCTGGGGTTCGGGGAGCAGCCTCCGGCCTCTGGTACTGGAGCGGCCGGCGGGCCCG
TGGGCAGCCTTGCAGCGGTGTGTCTAGGTCAATGGCTTCTAAGACTCCAGTTGGATTTCATTGGACTGG
AAACATGGGAAATCCAATGGCAAAAATCTCATGAAACATGGCTATCCACTCATCCTCTATGACGTGTT
CCTGATGTATGCAAGGAGTTTAAAGAGGCTGGGAACAGGTAGCATCCTCCCAGCAGAAGTAGCCGAAA
AGGCTGACAGGATTATCACAAATGCTGCCCTCCAGTATGAATGCGGTAGAAGTTTATTCTGGAGCAAACGG
GATTCTAAAAAAGTGAAGAAAGGCTCATTATTAATAGATTCCAGTACTATTGATCCTTCAGTTTAAAA
GAATTGGCAAAAGAGTTGAGAAAATGGGAGCTGTTTTTCATGGACGCCCTGTCTCCGGTGGTGTAGGAG
CTGCTCGGTCTGGAAACCTTACATTTATGGTGGGAGGAGTTGAAGATGAGTTTGCTGCTGCCAAGAGTT
GCTGGAATGCATGGGCTCCAACGTGGTATACTGTGGAGCTGTTGGAACGGGGCAGTCTGCAAAGATCTGC
ACAACATGCTGTTGGCTATAAGTATGATTGGAACCGCTGAAGCTATGAACCTTGGAAATCAGGTCAGGCC
TTGACCCAAAATATTGGCTAAAATCCTGAATATGAGCTCCGGACGATGCTGGTCCAGCGACACTTACAA
CCCCGTACCCGGGTTATGCATGGGTCCTCATCCAATAACTACCAAGGTGGATTGGAAACAACACTA
ATGGCTAAGGATCTGGGATTGGCTCAAGACTCTGCCACCAGCACAAGACCCCAATTCTCCTAGGAAGCC
TGGCCCATCAGATATACAGGATGATGTGTTCAAAGGGCTACTCAAAGAAAGACTTCTCATCTGTGTTCCA
GTATCTACGGGAGGAGGAGCCCTTC

ACGCGTACGCGGCCGCTCGAGCAGAAACTCATCTCAGAAGAGGATCTGGCAGCAAATGATATCCTGGATT
ACAAGGATGACGACGATAAGGTTTAA



[View online »](#)

Protein Sequence: >MR204982 protein sequence
Red=Cloning site Green=Tags(s)

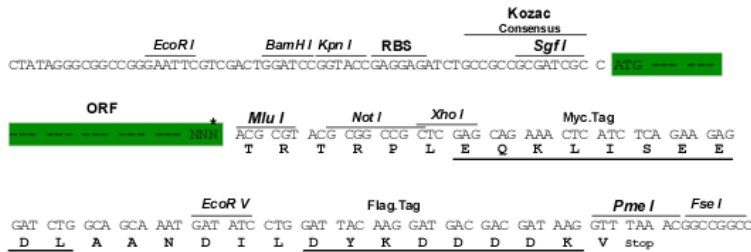
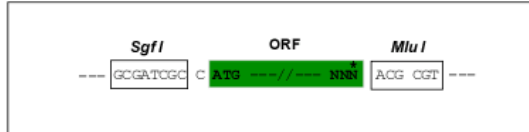
MAASLGFRGAASGLWYWSGRRRPVGSAAVCSRSMASKTPVGF IGLGNMGNPMAKNLMKHGYPLILYDVF
 PDVCKEFKEAGEQVASSPAEVAEKADRIITMLPSSMNAVEVYSGANGILKKVKKGSLLIDSSTIDPSVSK
 ELAKEVEKMGAVFMDAPVSGGVGAARSGNLT F MVGGVEDEF AAAQELLECMGSNVVYCGAVGTGQSAKIC
 NMMLLAISMIGTAEAMN LGIRSGLDPKLLAKILNMSSGRCWSSDTYNPVPGVMHGVPSSNNYQGGFGTTL
 MAKDLGLAQDSATSTKTPILLGSLAHQIYRMMCSKGYSKKDFSSVFQYLREEEPF

TRTRPLEQKLISEEDLAANDILDYKDDDDKV

Restriction Sites: SgfI-MluI

Cloning Scheme:

Cloning sites used for ORF Shuttling:



* The last codon before the Stop codon of the ORF

ACCN: NM_145567

ORF Size: 1008 bp

OTI Disclaimer: The molecular sequence of this clone aligns with the gene accession number as a point of reference only. However, individual transcript sequences of the same gene can differ through naturally occurring variations (e.g. polymorphisms), each with its own valid existence. This clone is substantially in agreement with the reference, but a complete review of all prevailing variants is recommended prior to use. [More info](#)

OTI Annotation: This clone was engineered to express the complete ORF with an expression tag. Expression varies depending on the nature of the gene.

Components: The ORF clone is ion-exchange column purified and shipped in a 2D barcoded Matrix tube containing 10ug of transfection-ready, dried plasmid DNA (reconstitute with 100 ul of water).

Reconstitution Method:

1. Centrifuge at 5,000xg for 5min.
2. Carefully open the tube and add 100ul of sterile water to dissolve the DNA.
3. Close the tube and incubate for 10 minutes at room temperature.
4. Briefly vortex the tube and then do a quick spin (less than 5000xg) to concentrate the liquid at the bottom.
5. Store the suspended plasmid at -20°C. The DNA is stable for at least one year from date of shipping when stored at -20°C.

RefSeq: [NM_145567.1](#), [NP_663542.1](#)

RefSeq Size: 1748 bp

RefSeq ORF: 1008 bp

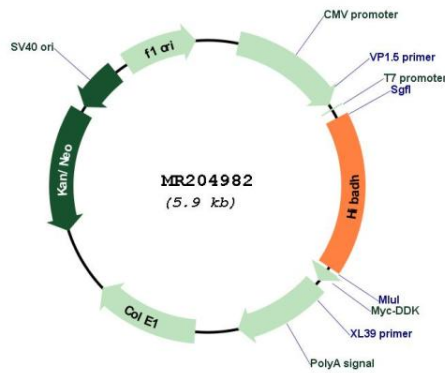
Locus ID: 58875

UniProt ID: [Q99L13](#)

Cytogenetics: 6 B3

MW: 35.4 kDa

Product images:



Circular map for MR204982