

Product datasheet for **MR204952**

Rsrc1 (NM_025822) Mouse Tagged ORF Clone

Product data:

Product Type: Expression Plasmids
Product Name: Rsrc1 (NM_025822) Mouse Tagged ORF Clone
Tag: Myc-DDK
Symbol: Rsrc1
Synonyms: 1200013F24Rik; SRrp53
Mammalian Cell Selection: Neomycin
Vector: pCMV6-Entry (PS100001)
E. coli Selection: Kanamycin (25 ug/mL)
ORF Nucleotide Sequence: >MR204952 ORF sequence
Red=Cloning site Blue=ORF Green=Tags(s)

TTTTGTAATACGACTCACTATAGGGCGGCCGGAATTCGTCGACTGGATCCGGTACCGAGGAGATCTGCC
GCC**CGATCGCC**

ATGGGACGCCGGTCTTCAGACACTGAAGAGGAAAGCAGAAGCAAGAGGAAAAAGAAACACCGAGGCGCT
CGTCTTCAAGCAGCTCTTCAGACAGCAGGACATACAGCCGCAAGAAGGGCGGGAGGAGGCCGAGGTCCGA
CTCAAGGTCTGGTCTAGAGACCGCCAGCTTCGCTCGATTCTTATGAGAGAAGACGCAGGCGCAGATCA
AGCAGCAGCTCTTCTTATGGCTCCAGAAGGAAAAGAGTTCGAGTCGTTCCAGGGGCCGAGGAAAACCT
ATAGAGTTCAAAGTCTCGGTCAAAAAGCAGAACCAGAAGTCCAGGTCAAGGCCTCGTCCAGCTCACA
TAGTAGAAGCAGTGAAAGATCCAGTCACAGAAGAACCCGTAGCAGGTCCAGGGACAGAGACAGACGTAAA
GTCCGGGACAAAGAGAAAAGAGAAAAGGAGAAGGATAAAGGCAAAGACAAAGAAGTGCACAGCATCAAAC
GCGGGGATTCTGGAAACATCAAAGCTGGATTAGAACATCTGCCTCCAGCTGAGCAGGCCAAAGCCAGACT
GCAATTGGTCTTGAAGCTGCTGAAAAGCTGATGAAGCATTAAAAGCCAAAGAAAGGAGTGAGGAAGAA
GCAAAGAGAAGAAAAGAAAGACCAAGCCACCCTGGTAGAACAAAGTCAAAGAGTAAAGGAAATCGAAG
CAATTGAAAGTGATTCTTTGTTTCAGCAGACATTAGATCAAGTAAAGACGTCAAAGGCGAGTAGAACC
AAGTGAAGTGCAGCATGTGACTGCGGCATCAGGACCAGCATCCGACGCTGCTGAGCCACCCAGCACTGGA
AAGGAAATAGACCCTGACAGCATCCCCACGGCTATCAAGTACCAAGATGACAATTCTTAGCTCATCCAA
ATCTATTTATTGAAAAGGCCGAGGCTGAAGAAAAGTGGTTCAAGAGATTAAATCGCTCTCCGACAAGAAAG
GCTGATGGGCAGTCCCGTGGCC

ACGCGTACGCGGCCGCTCGAGCAGAAACTCATCTCAGAAGAGGATCTGGCAGCAAATGATATCCTGGATT
ACAAGGATGACGACGATAAGGTTTAA



[View online »](#)

Protein Sequence: >MR204952 protein sequence
Red=Cloning site Green=Tags(s)

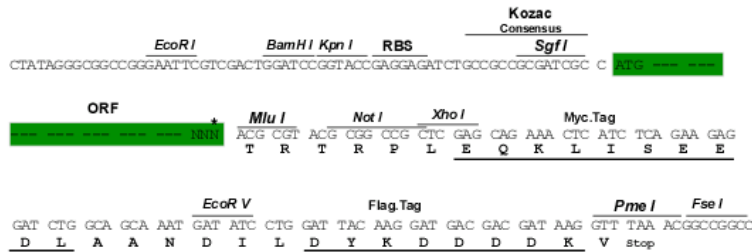
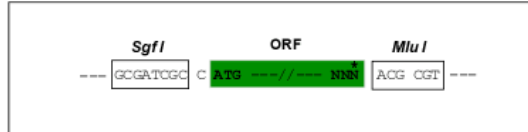
MGRRSSDTEEESRSKRKKKHRRSSSSSSSDSRTYSRKKGGRRPRSDRSWSRDRQLRSHSYERRRRRRS
 SSSSSYGSRRKRSRSRSRGRGKPYRVQRSRKSRTRRRSRPRPRSHSRSSERSHRRTRRSRDRDRRK
 VRDKEKREKEDKDGKDEVHSIKRGDSGNIKAGLEHLPPAEQAKARLQLVLEAAAKADEALKAKERSEEE
 AKRRKEEDQATLVEQVKRVKEIEAIESDSFVQQTFRSSKDVKKAVPESEVQHVTAAASGPASAAAEPSTG
 KEIDPDSIPTAIKYQDDNSLAHPNLFIEKAEAEKWKRLIALRQERLMGSPVA

TRTRPLEQKLISEEDLAANDILDYKDDDDKV

Restriction Sites: SgfI-MluI

Cloning Scheme:

Cloning sites used for ORF Shuttling:



* The last codon before the Stop codon of the ORF

ACCN: NM_025822

ORF Size: 1005 bp

OTI Disclaimer: The molecular sequence of this clone aligns with the gene accession number as a point of reference only. However, individual transcript sequences of the same gene can differ through naturally occurring variations (e.g. polymorphisms), each with its own valid existence. This clone is substantially in agreement with the reference, but a complete review of all prevailing variants is recommended prior to use. [More info](#)

OTI Annotation: This clone was engineered to express the complete ORF with an expression tag. Expression varies depending on the nature of the gene.

Components: The ORF clone is ion-exchange column purified and shipped in a 2D barcoded Matrix tube containing 10ug of transfection-ready, dried plasmid DNA (reconstitute with 100 ul of water).

Reconstitution Method:

1. Centrifuge at 5,000xg for 5min.
2. Carefully open the tube and add 100ul of sterile water to dissolve the DNA.
3. Close the tube and incubate for 10 minutes at room temperature.
4. Briefly vortex the tube and then do a quick spin (less than 5000xg) to concentrate the liquid at the bottom.
5. Store the suspended plasmid at -20°C. The DNA is stable for at least one year from date of shipping when stored at -20°C.

RefSeq: [NM_025822.4](#)

RefSeq Size: 3232 bp

RefSeq ORF: 1005 bp

Locus ID: 66880

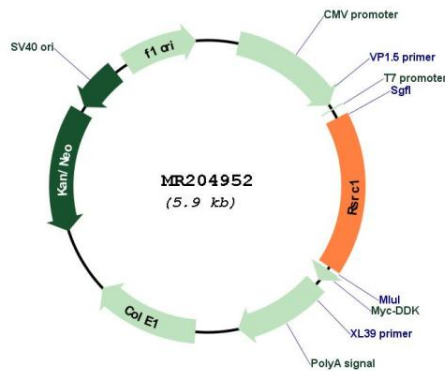
UniProt ID: [Q9DBU6](#)

Cytogenetics: 3 E1

MW: 38.6 kDa

Gene Summary: Plays a role in pre-mRNA splicing. Involved in both constitutive and alternative pre-mRNA splicing. May have a role in the recognition of the 3' splice site during the second step of splicing (By similarity).[UniProtKB/Swiss-Prot Function]

Product images:



Circular map for MR204952