

## Product datasheet for MR204947

### Ackr1 (NM\_010045) Mouse Tagged ORF Clone

#### Product data:

Product Type:	Expression Plasmids
Product Name:	Ackr1 (NM_010045) Mouse Tagged ORF Clone
Tag:	Myc-DDK
Symbol:	Ackr1
Synonyms:	AA162249; CCBP1; CD234; Darc; Dfy; ESTM35; FY; GPD
Mammalian Cell Selection:	Neomycin
Vector:	pCMV6-Entry (PS100001)
E. coli Selection:	Kanamycin (25 ug/mL)
ORF Nucleotide Sequence:	>MR204947 ORF sequence Red=Cloning site Blue=ORF Green=Tags(s)

TTTTGTAATACGACTCACTATAGGGCGGCCGGAATTCGTCGACTGGATCCGGTACCGAGGAGATCTGCC  
GCC**CGATCGCC**

ATGGGGAAGTGTCTGTATCCGGTGGAAACCCCTTCACTAGACAAGAATGGAAGTCAAGTTACTTTTCGACA  
GCTGGAATTATTCGTTTGAAGATAACTACTCCTATGAACTCTCGAGTGACTACAGCCTGACACCAGCTGC  
TCCCTGCTACTCCTGTAATCTGCTTGACAGGTCTCCCTGCCCTTCTTCATGCTCACCAGTGTCTGGGC  
ATGCTGGCAAGTGGCAGCATCCTCTTCGCGATTCTCAGACCTTTCTTCCACTGGCAGATTTGCCCCAGT  
GGCCCATCTGGCAGAGTTAGCAGTGGCAGTGCCTGTTTCAGCATTGCAGTGCCCATCCTGGCACCAGG  
CTTACACAGCGCCACAGCACAGCCCTATGCAACCTGGGCTACTGGGTATGGTATACTTCTGCTTTTGCC  
CAAGCTCTGTTGATAGGATGCTATGCTTGCCCTGAATCCCAGACTGAATATTGGTCAACTCCGTGGCTTCA  
CCTTGGGACTCAGTGTGGGACTTTGGGGAGCAGCTGCCCTCTCAGGGCTGCCAGTCGCCCTGGCCAGTGA  
TGTTTACAATGGCTTCTGCACCTTTCCATCCTCCAGAGACATGGAAGCTTTGAAGTACACTCATTATGCC  
ATCTGTTTACCATCTTCACTGTATTGCCACTGACTCTTTTGGCAGCCAAGGGCTGAAGATAGCACTGA  
GCAAGGGGCTGGCCCTGGGTTAGTGTCTTGTGGATCTGGTTCATTTCTGGTGGCCTCATGGGATGGT  
TCTCATATTTGATGCTTTGGTGAGGTCCAAAAGTCTTCTGTATACATGTCAATCCCAGAAGATTCTT  
GATGCGATGCTGAATGTGACAGAAGCCCTGAGTATGCTGCACTGTGTGGCTACCCCACTGCTCCTGGCCC  
TGTTCTGCCATCAGACCACCCGTAGATCCTTGTCTCACTCTCCCTCCCTACAAGACAGGCTTCTCAAAT  
GGATGCCCTTGCAGGCAAGTCC

**ACGCGT**ACGCGGCCGCTCGAGCAGAAAACCTCATCTCAGAAGAGGATCTGGCAGCAAATGATATCCTGGATT  
ACAAGGATGACGACGATAAGGTTTAA



[View online »](#)

**Protein Sequence:** >MR204947 protein sequence  
 Red=Cloning site Green=Tags(s)

MGNCLYPVETLSLDKNGTQFTFDSWNYSFEDNYSYELSSDYSLTPAAPCYSCNLLDRSSLPFFMLTSVLG  
 MLASGSILFAILRPFHFWQICPSWPILAEAVGSALF5IAVPILAPGLSAHSTALCNLGYWVWYTSFAFA  
 QALLIGCYACLNPRLNIGQLRGFTLGLSVGLWGAAALSGLPVALASDVYNGFCTFPSSRDMEALKYTHYA  
 ICFTIFTVLPLTLAAKGLKIALSKGPGPWVSVLWIWIFWFWPHGMVLIFDALVRSKTVLLYTCQSQKIL  
 DAMLVNTEALSMLHCVATPLLLALFCHQTTRRSLSSLSLPTTRQASQMDALAGKS

TRTRPLEQKLISEEDLAANDILDYKDDDDKV

**Restriction Sites:** SgfI-MluI

**Cloning Scheme:**

Cloning sites used for ORF Shuttling:



\* The last codon before the Stop codon of the ORF

**ACCN:** NM\_010045

**ORF Size:** 1005 bp

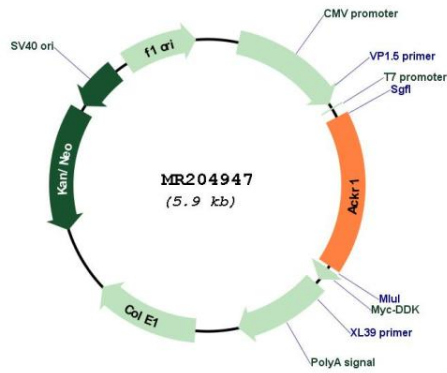
**OTI Disclaimer:** Due to the inherent nature of this plasmid, standard methods to replicate additional amounts of DNA in E. coli are highly likely to result in mutations and/or rearrangements. Therefore, OriGene does not guarantee the capability to replicate this plasmid DNA. Additional amounts of DNA can be purchased from OriGene with batch-specific, full-sequence verification at a reduced cost. Please contact our customer care team at [custsupport@origene.com](mailto:custsupport@origene.com) or by calling 301.340.3188 option 3 for pricing and delivery.

The molecular sequence of this clone aligns with the gene accession number as a point of reference only. However, individual transcript sequences of the same gene can differ through naturally occurring variations (e.g. polymorphisms), each with its own valid existence. This clone is substantially in agreement with the reference, but a complete review of all prevailing variants is recommended prior to use. [More info](#)

**OTI Annotation:** This clone was engineered to express the complete ORF with an expression tag. Expression varies depending on the nature of the gene.

<b>Components:</b>	The ORF clone is ion-exchange column purified and shipped in a 2D barcoded Matrix tube containing 10ug of transfection-ready, dried plasmid DNA (reconstitute with 100 ul of water).
<b>Reconstitution Method:</b>	<ol style="list-style-type: none"><li>1. Centrifuge at 5,000xg for 5min.</li><li>2. Carefully open the tube and add 100ul of sterile water to dissolve the DNA.</li><li>3. Close the tube and incubate for 10 minutes at room temperature.</li><li>4. Briefly vortex the tube and then do a quick spin (less than 5000xg) to concentrate the liquid at the bottom.</li><li>5. Store the suspended plasmid at -20°C. The DNA is stable for at least one year from date of shipping when stored at -20°C.</li></ol>
<b>RefSeq:</b>	<a href="#">NM_010045.1</a>
<b>RefSeq Size:</b>	1158 bp
<b>RefSeq ORF:</b>	1005 bp
<b>Locus ID:</b>	13349
<b>UniProt ID:</b>	<a href="#">Q9QUI6</a>
<b>Cytogenetics:</b>	1 80.33 cM
<b>MW:</b>	36.7 kDa
<b>Gene Summary:</b>	<p>Atypical chemokine receptor that controls chemokine levels and localization via high-affinity chemokine binding that is uncoupled from classic ligand-driven signal transduction cascades, resulting instead in chemokine sequestration, degradation, or transcytosis. Also known as interceptor (internalizing receptor) or chemokine-scavenging receptor or chemokine decoy receptor. Has a promiscuous chemokine-binding profile, interacting with inflammatory chemokines of both the CXC and the CC subfamilies but not with homeostatic chemokines. Acts as a receptor for chemokines including CCL2, CCL5, CCL7, CCL11, CCL13, CCL14, CCL17, CXCL5, CXCL6, IL8/CXCL8, CXCL11, GRO, RANTES, MCP-1 and TARC. May regulate chemokine bioavailability and, consequently, leukocyte recruitment through two distinct mechanisms: when expressed in endothelial cells, it sustains the abluminal to luminal transcytosis of tissue-derived chemokines and their subsequent presentation to circulating leukocytes; when expressed in erythrocytes, serves as blood reservoir of cognate chemokines but also as a chemokine sink, buffering potential surges in plasma chemokine levels (By similarity). [UniProtKB/Swiss-Prot Function]</p>

Product images:



Circular map for MR204947