

## Product datasheet for MR204946

### Chn1 (NM\_175752) Mouse Tagged ORF Clone

#### Product data:

Product Type:	Expression Plasmids
Product Name:	Chn1 (NM_175752) Mouse Tagged ORF Clone
Tag:	Myc-DDK
Symbol:	Chn1
Synonyms:	0610007119Rik; 0710001E19Rik; 1700112L09Rik; 2900046J01Rik; AI413815; ARHGAP2
Mammalian Cell Selection:	Neomycin
Vector:	pCMV6-Entry (PS100001)
E. coli Selection:	Kanamycin (25 ug/mL)
ORF Nucleotide Sequence:	>MR204946 ORF sequence Red=Cloning site Blue=ORF Green=Tags(s)

TTTTGTAATACGACTCACTATAGGGCGGCCGGAATTCGTCGACTGGATCCGGTACCGAGGAGATCTGCC  
GCC**CGATCGCC**

ATGCCATCCAAAGAGTCTTGGTCGGGGAGGAAAGCTAACAGAGCCACAGTCCACAAAGCAAAACCCGAGG  
GCCGGCAGCAAGGCTTACTGATAGCAGCCTTGGGAATGAAACTGGGCTCTCAAAGTCATCTGTGACAAT  
CTGGCAACCTCTGAAACTCTTTGCTTATTCGCAGTTGACATCACTTGTTAGAAGAGCAACTCTGAAAGAA  
AATGAACAAATCCAAAATATGAAAAGGTTCACAATTTCAAGGTGCATACGTTCCGAGGGCCACACTGGT  
GTGAATACTGTGCCAACTTCATGTGGGCCTCATTGCTCAGGGAGTGAAATGTGCAGATTGTGGGTGAA  
TGTTACAAGCAGTGTTCCAAGATGGTCCCAATGACTGTAAGCCAGATCTGAAGCACGTGAAGAAGGTG  
TACAGCTGTGACCTGACAACGCTCGTGAAGCTCACATCACCAAGCGGCAATGGTGGTAGACATGTGCA  
TCAGGGAGATCGAGTCCAGAGGCTTAATTCTGAAGGACTCTACCGAGTGTGAGGATTTAGTGACCTGAT  
TGAAGATGTCAAGATGGCTTTTGATAGAGATGGTGAGAAGCGGATATTTCTGTGAACATGTATGAGGAC  
ATCAACATTACTGCTGCACTTAAACTGTACTTCAGGGATCTGCCAATTCCTCTCATCACATACGATG  
CCTACCCCAAGTTCATTGAGTCTGCCAAAATATGGACCCTGACGAGCAATTGGAGACCCCTCACGAAGC  
ACTGAGATCGCTGCCGCTGCCACTGCGAGACGCTCCGGTACCTCATGGCGCATCTCAAGAGAGTGACC  
CTTCATGAGAAGGAGAATCTGATGAGTGCAGAGAACCTTGGGATCGTGTGGACCAACCCTCATGAGAT  
CCCCAGAGCTCGACCCCATGGCCGCCCTGAACGACATACGCTATCAGAGACTGGTGGTGGAGCTGCTTAT  
CAAAAACGAAGACATTTTATT

**ACGCGT**ACGCGGCCGCTCGAGCAGAAACTCATCTCAGAAGAGGATCTGGCAGCAATGATATCCTGGATT  
ACAAGGATGACGACGATAAGGTTTAA



[View online »](#)

**Protein Sequence:** >MR204946 protein sequence  
 Red=Cloning site Green=Tags(s)

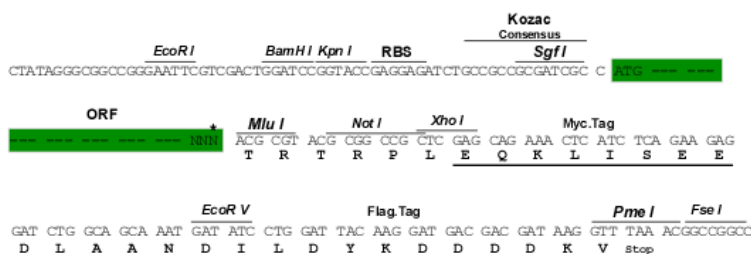
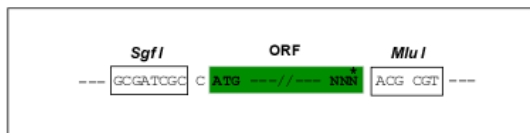
MPSKESWSGRKANRATVHKAKPEGRQQGLLIAALGMKLGSKSSVTIWQPLKLFAYSQLTSLVRRATLKE  
 NEQIPKYEKVHNFKVHTFRGPHWCEYCANFMWGLIAQGVKCADCLNVHKQCSKMVPNDCKPDLKHVKKV  
 YSCDLTTLVKAHITKRPMVDMCIREIESRGLNSEGLYRVSGFSDLIEDVKMAFDRDGEKADISVNMYYE  
 INIITGALKLYFRDLPIPLITYDAYPKFIESAKIMDPDEQLETLHEALRSLPPAHCETLRYLMAHLKRV  
 LHEKENLMSAENLGIVFGPTLMRSELDPMAALNDIRYQRLVVELLIKNEDILF

TRTRPLEQKLISEEDLAANDILDYKDDDDKV

**Restriction Sites:** SgfI-MluI

**Cloning Scheme:**

Cloning sites used for ORF Shuttling:



**ACCN:** NM\_175752

**ORF Size:** 1005 bp

**OTI Disclaimer:** The molecular sequence of this clone aligns with the gene accession number as a point of reference only. However, individual transcript sequences of the same gene can differ through naturally occurring variations (e.g. polymorphisms), each with its own valid existence. This clone is substantially in agreement with the reference, but a complete review of all prevailing variants is recommended prior to use. [More info](#)

**OTI Annotation:** This clone was engineered to express the complete ORF with an expression tag. Expression varies depending on the nature of the gene.

**Components:** The ORF clone is ion-exchange column purified and shipped in a 2D barcoded Matrix tube containing 10ug of transfection-ready, dried plasmid DNA (reconstitute with 100 ul of water).

**Reconstitution Method:**

1. Centrifuge at 5,000xg for 5min.
2. Carefully open the tube and add 100ul of sterile water to dissolve the DNA.
3. Close the tube and incubate for 10 minutes at room temperature.
4. Briefly vortex the tube and then do a quick spin (less than 5000xg) to concentrate the liquid at the bottom.
5. Store the suspended plasmid at -20°C. The DNA is stable for at least one year from date of shipping when stored at -20°C.

**RefSeq:** [NM\\_175752.3](#)

**RefSeq Size:** 3862 bp

**RefSeq ORF:** 1005 bp

**Locus ID:** 108699

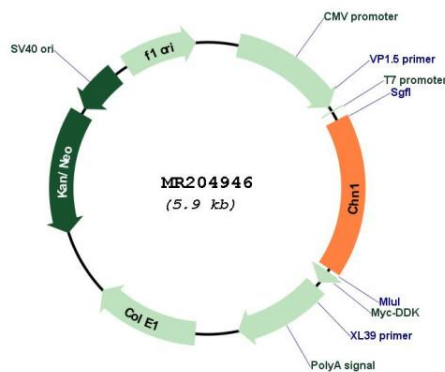
**UniProt ID:** [Q91V57](#)

**Cytogenetics:** 2 C3

**MW:** 38.1 kDa

**Gene Summary:** GTPase-activating protein for p21-rac and a phorbol ester receptor. May play an important role in neuronal signal-transduction mechanisms (By similarity). Involved in the assembly of neuronal locomotor circuits as a direct effector of EPHA4 in axon guidance.[UniProtKB/Swiss-Prot Function]

### Product images:



Circular map for MR204946