

Product datasheet for MR204879

Parvg (NM_022321) Mouse Tagged ORF Clone

Product data:

Product Type:	Expression Plasmids
Product Name:	Parvg (NM_022321) Mouse Tagged ORF Clone
Tag:	Myc-DDK
Symbol:	Parvg
Synonyms:	AI413459
Mammalian Cell Selection:	Neomycin
Vector:	pCMV6-Entry (PS100001)
E. coli Selection:	Kanamycin (25 ug/mL)
ORF Nucleotide Sequence:	>MR204879 ORF sequence Red=Cloning site Blue=ORF Green=Tags(s)

TTTTGTAATACGACTCACTATAGGGCGGCCGGAATTCGTCGACTGGATCCGGTACCGAGGAGATCTGCC
GCC**CGATCGCC**

ATGGAGTCAGAGTTCCTCTATGACCTGTTGCAGCTCCCAAAGGAGGTAGCTCAGCCACGGAGGAAGAGC
TTCCACGAGGAGGAAAGAAGAAATATCTGTACCCAATCCAAGAGGAACCCCAAGTTTGAAGAAGTCA
GAAGGTGCTGATGGAATGGATCAACACCACACTCCTCCCGGAGCACATCGTGGTCCGAGCCTGGAGGAA
GACATGTTTGATGGACTTATTCTGCACCACCTGTTCCAGAAGTTGGCATCGCTCAAGCTGGAAGTGGAGG
AAATCTCTCTGACCTCGGCCAGCCAGAGGCACAAGCTGGGGTCACTCCTGGAGGCCGTCAACCAGAACCT
ACAGGTGGAAGAGAAGCAGGCCAAGTGGAGCGTGGAGACCATCTTCAACAAGGACCTGCTGGCCACCTTG
CATCTCCTGGTGGCCCTGGCCAAACGCTTCCAGCCGACCTGCCCTCCAGACAACGTCCAGGTGGAAG
TCATCCACATTGAGAGCACCAAGACCGGCTGAAGTCGGACAAGCAGGTGGAGCAGCTCACAGAATGCAA
GTCACACAAGGACCAGCCTTTACAGGACGCCTTTGATGAATATTTAAGCTGGCTCCGGAGAAAAGTGAC
GCCGTCCAAGAGGCCATTGTGAGCTTTGTCAACCAGAAGCTAGAGCGCCTGGCCCTGTCTGTGCAGAGTC
TGGATACCCAGTTTGCAGATGGCGTCATCCTGCTCCTGCTGATTGGACAAGTGGAAAGGCTTCTTCTGCA
TCTGACGGAATTCTATCTCACTCCAGCTCTCCACAGAAATGCTGCACAATGTACCCTAGCCCTGGAT
CTGCTCAAGGATGAAGGCTGTTTCAGCTACCCTGTCAACCCTGAAGATATTGTGAACAAGGACGCCAAGA
GCACACTGAGGATACTTTACAGCCTATTCCAGAAGCATTCACTGAGGGCGGAGGGTGGAGGGGCACACCA
TGCTACCCCAAAC

ACGCGTACGCGGCCGCTCGAGCAGAAACTCATCTCAGAAGAGGATCTGGCAGCAAATGATATCCTGGATT
ACAAGGATGACGACGATAAGGTTTAA



[View online »](#)

Protein Sequence: >MR204879 protein sequence
Red=Cloning site Green=Tags(s)

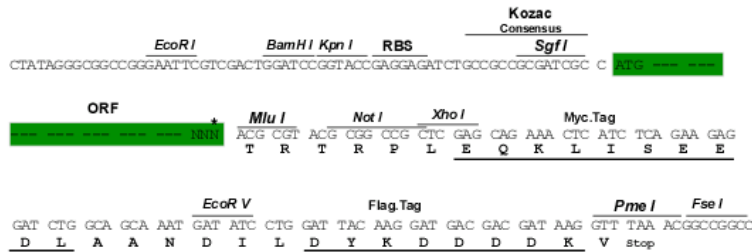
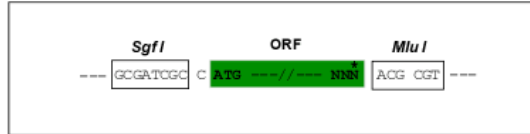
MESEFLYDLLQLPKEVAQPTEEELPRGGKKKYLSPNSKRNPKEELQKVLMEWINTTLLPEHIVVRSLEE
 DMFDGLILHHLFQKLASLKLEVEEISLTSASQRHKLGVILEAVNQNLQVEEKQAKWSVETIFNKDLLATL
 HLLVALAKRFQPDLPDNDVQVEVIHIESTKTGLKSDKQVEQLTECKSHKDQPLQDAFDELFKLAPEKVH
 AVQEAIYSFVNQKLERLGLSVQSLDTQFADGVILLLLIGQLEGFHLHTEFYLTTPSSPTMLHNVTLALD
 LLKDEGLFSYPVNPEDIVNKDAKSTLRILYSLFQKHSLRAEGGGAHHATPN

TRTRPLEQKLISEEDLAANDILDYKDDDDKV

Restriction Sites: SgfI-MluI

Cloning Scheme:

Cloning sites used for ORF Shuttling:



* The last codon before the Stop codon of the ORF

ACCN: NM_022321

ORF Size: 996 bp

OTI Disclaimer: The molecular sequence of this clone aligns with the gene accession number as a point of reference only. However, individual transcript sequences of the same gene can differ through naturally occurring variations (e.g. polymorphisms), each with its own valid existence. This clone is substantially in agreement with the reference, but a complete review of all prevailing variants is recommended prior to use. [More info](#)

OTI Annotation: This clone was engineered to express the complete ORF with an expression tag. Expression varies depending on the nature of the gene.

Components: The ORF clone is ion-exchange column purified and shipped in a 2D barcoded Matrix tube containing 10ug of transfection-ready, dried plasmid DNA (reconstitute with 100 ul of water).

Reconstitution Method:

1. Centrifuge at 5,000xg for 5min.
2. Carefully open the tube and add 100ul of sterile water to dissolve the DNA.
3. Close the tube and incubate for 10 minutes at room temperature.
4. Briefly vortex the tube and then do a quick spin (less than 5000xg) to concentrate the liquid at the bottom.
5. Store the suspended plasmid at -20°C. The DNA is stable for at least one year from date of shipping when stored at -20°C.

RefSeq: [NM_022321.1](#), [NM_022321.2](#), [NM_022321.3](#), [NM_022321.4](#), [NP_071716.2](#)

RefSeq Size: 2655 bp

RefSeq ORF: 996 bp

Locus ID: 64099

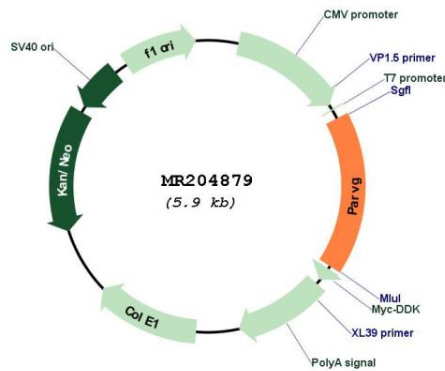
UniProt ID: [Q9ERD8](#)

Cytogenetics: 15 E2

MW: 37.6 kDa

Gene Summary: Probably plays a role in the regulation of cell adhesion and cytoskeleton organization. [UniProtKB/Swiss-Prot Function]

Product images:



Circular map for MR204879